

**MISSION BAY  
WATERSHED MANAGEMENT AREA**  
*Land Use Map*

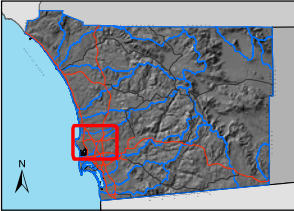
**Legend**

- Watershed Sub-Basins
- 303(d) Waters (2006)\*\***
- Water Body Type**
- Coastal Shorelines
- Rivers/Streams
- Bays and Harbors
- Estuaries
- Lakes/Reservoirs
- Major Roads
- Lakes
- Rivers
- Creeks
- Streams

**SANDAG Land Use (Comp 06)**

- Existing Land Use**
- Spaced Rural Residential
  - Residential
  - Institution
  - Military
  - Commercial and Office
  - Industry
  - Transportation, Communication, Utilities
  - Commercial Recreation
  - Parks
  - Agriculture
  - Undeveloped
  - Water
  - Incorporated Area

Data Sources:  
 Land Use: SANDAG, (2006)  
 \*\*303(d) Waters / Watersheds: (SWRCB), (2006)  
 Disclaimer  
 The 2006 303(d) List GIS shape files and associated 303(d) list excel tables containing the information shown on the list are provided on this State Water Resources Control Board website for public use. These GIS representations of the areal extent of affected waters are estimated and should not be considered authoritative for the development of TMDLs (Total Maximum Daily Load) or other regulatory actions. The TMDL effort may ultimately address more or less areal extent than shown in these GIS files. Mapping the 303(d) listed waters is a work in progress and will be updated during each listing cycle to better define the impacted areas.



PRINTED - 02/04/2008

THIS MAP IS PROVIDED WITHOUT WARRANTY OF ANY KIND, EITHER EXPRESSED OR IMPLIED, INCLUDING BUT NOT LIMITED TO, THE IMPLIED WARRANTIES OF MERCHANTABILITY AND FITNESS FOR A PARTICULAR PURPOSE.

Copyright © 2008. All Rights Reserved. This product may contain information from SANDAG Regional Information System which cannot be reproduced without the written permission of SANDAG.

This product may contain information which has been reproduced with permission granted by Thomas Brothers Maps.

K120051006\_watershedprot\_barkeraromplwatersheds\_102007template\_wma\_atlas\_comp06.mxd

