



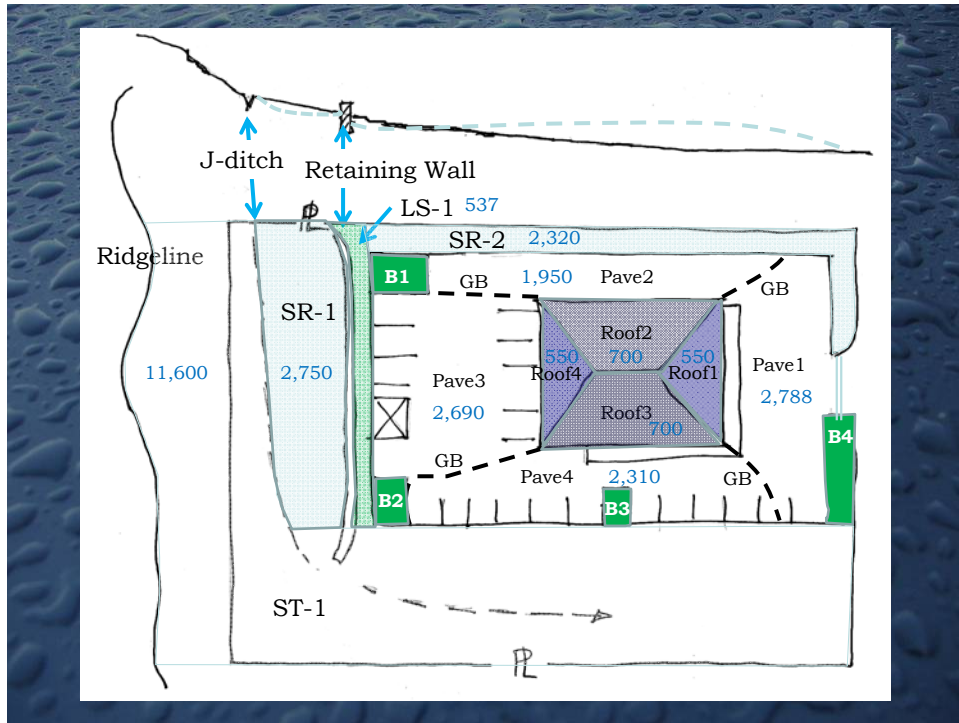
Exercise: Using the Model SUSMP LID Design Guide

Dan Cloak, P.E.
Principal
Dan Cloak Environmental Consulting



What you need

- Example Project Layout
- *Model SUSMP LID Design Guide*
 - Chapter 4 in the Model SUSMP
- Workshop Exercise Handout (5 pp.)
 - Includes tables
- Hand-held calculator



Exercise

1. Enter the DMA information into the documentation and calculation tables. Determine whether all site runoff is managed according to SUSMP criteria and if not, why not.
2. Identify options for altering the site drainage design to meet the criteria without increasing the size of any IMP.
3. Bioretention area B-1 is to be eliminated because the area is needed for a utility pad. What solutions are available for handling runoff from DMAs Roof-2 and Pave-2?