

**SAN LUIS REY WATERSHED COUNCIL
MEETING MINUTES: 10/27/2008**

- **(Item 1) Call to Order:** 1:05 pm

- **(Item 2) List of Attendees present on 10/27/08:**

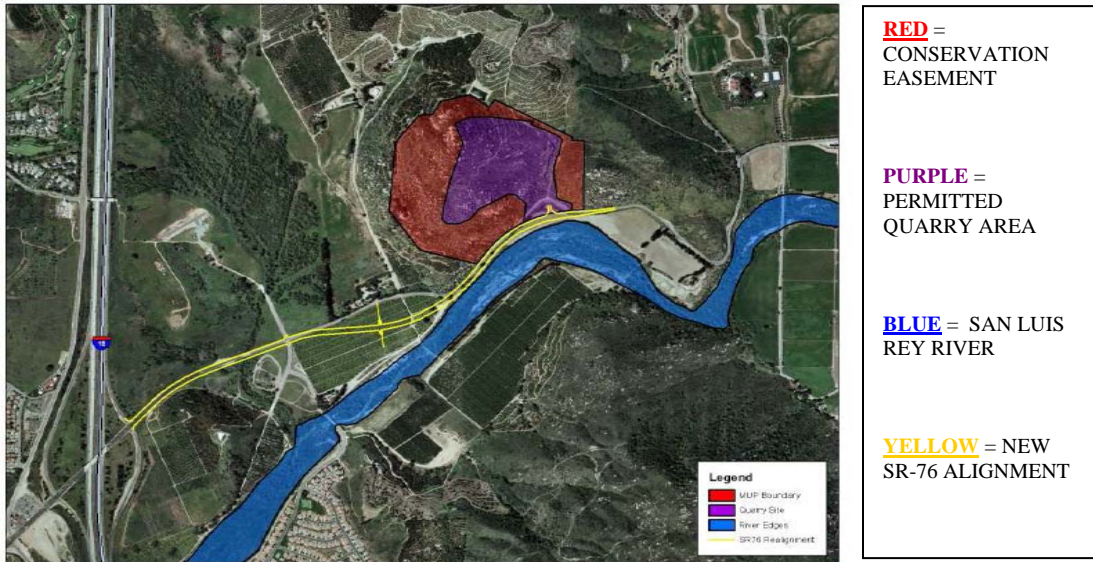
David Allan	Fallbrook Land Conservancy
Gary Nolan	Granite Construction
Heidi Brow	Pala Band of Mission Indians
Jack Griffiths	Rainbow Municipal Water District
Joe Jewell	Vista Irrigation District, BOD
Joshlynn Tanner	Native American Environmental Protection Coalition
Karie Reuther	Granite Construction
Kerry Cato	Cato Geoscience
Paul Dorey	Vista Irrigation District, BOD
Rick Gundry	Inland Geologic, Inc.
Ruth Harber	Riverwatch
Scott Norris	County of San Diego
Tom Bond	Sierra Club
Vic Panky	San Luis Rey MWD
Wayne Cooley	La Jolla Band of Indians

(Item 3) Approval of Minutes:

The minutes from 09/22/2008 were approved with a few minor typographical changes. Vic Panky motioned to accept the minutes with the changes; Joe Jewell seconded the motion; the motion passed unanimously.

**(Item 4) PRESENTATION: Rosemary's Mountain Quarry & Highway 76 Realignment
(Gary Nolan, Sr Project Manager for Granite Construction):**

Website for more info / presentations / EIR: <http://www.rosemarysquarry.com/>



Project Overview:

- There is a need for local aggregate; San Diego imports 50% of their aggregate from north. The mined area will not be visible from I-15 / Pala Mesa area, as they are only mining the eastern face of Rosemary's Mountain. Once the mining is complete, the remaining rockface will be colored to match the natural rock left. Full Production is slated to begin in 2012. The plant is highly automated. Everything is done within the building; conveyers will go into the building, dump the rocks in piles inside, and trucks will then drive inside the building to retrieve loads. They expect to remove 25-26 million total tons of material during the life of the project. There are monthly community meetings (see website) for community input & to monitor dust control.
- There are 3 Phases to Rosemary's Mountain Quarry (currently in phase 1):
 - **Phase I**~the bottom slope facing Couser Canyon will be mined for materials used in the SR-76 Realignment, and to develop the permanent Aggregate & Asphalt Plant Sites. They will also install perimeter fencing, erosion/SWPP controls, relocate the quarry entrance, and construct a 30' berm at the entrance of the plant (when SR-76 is done). They will be building their permanent plant (2 buildings);
 - **Phase II**~the top of the mountain will begin to be mined;
 - **Phase III**~the middle area of the mountain will be mined.
- Endangered Species: toad fences are up for the Arroyo Toad protection & surveys are complete; SR-76 construction is limited to 65 decimials maximum, from 09/15 to 03/15 (for the least bells vireo); there were no gnatcatchers found. There will be no restrictions (ie: time or noise) at the Quarry.
- Rosemary's Mountain Quarry will be mining raw aggregate from the mountain, crushing it into 3' to sand-size particles; particles < ½" size will be used in the asphalt plant. All boulders will be mapped by geologist/engineers and monitored post-blasting, geological events > 1 on the Richter scale, and precipitation events with > 1" rain.
- Asphalt Plant ~ Air Pollution Emissions (PM10, PM2.5, and CO2); aggregate will be dried in double-drums. For more technical information, see the website listed above.
- **RECLAMATION PLAN:** This is detailed in the EIR (see website). The western side of Rosemary's Mountain is in a conservation easement, and can never be touched/mined. There will be a reservoir (in solid granite—not alluvium), which will be fed by rainwater/catch basin and used for the Pankey Groves. The Final Slope Angles (approx) will be 0.5:1 to 0.75:1 (as determined by a registered geologist). The area will be mined in 33' benches, which are approximately 65' wide. The Final Elevation/Pit: the reservoir is planned at 200' below SR-76.

SR-76 Road Widening / Realignment (ending at Rice Canyon Road):

- This project was initially proposed as a requirement, if the Quarry went in. It was engineered and approved by Cal Trans, and will be paid for by Granite Construction & the Pala Band of Mission Indians. Approximately 1.3 miles of SR-76 (From the I-5 to Rice Canyon Road) will be extended into 4 lanes, and be realigned at 2 of the more narrow curves. There will be a left turn lane (perhaps even a light) to turn into the Quarry. The construction schedule is approximately 250 days, ending in summer 2009. There will be a rip-rap embankment along the new road, raised up to 8 feet.

Water Use in the Quarry:

- There are 4 typical uses for water at Quarries: Dust Control, Irrigation, Concrete Production, and Fine Aggregate Processing. The Rosemary Mountain Quarry will not be producing/processing concrete or fine aggregate, therefore the Quarry will use water only for dust control & irrigation. The Quarry will initially use 2 wells belonging to the Pankey's to get water. The eastern well will be used throughout production to stock the reservoir on the mountain, and used for dust control from there. The western well, used by the Quarry only in phase 1, will eventually be used by Pardee for the Meadowood Housing Development.
- **Dust Control:** Dirt roads and open exposed areas will be hosed down with a water truck.
- **Irrigation:** The Quarry will capture excess water (irrigation runoff) from the Panky Groves, in order to use it to irrigate along the edge of berm (entrance to plant).
- **Water Summary:** current dust control uses 2 acre feet/month; **once the plant is running, they will use 4 acre feet/month (48 acre feet/year).** The Quarry maintains that the groves (which are now fallow) were using 56 acre feet/year, and therefore there will actually be a water savings of 8 acre feet/year. The Quarry would be interested in using reclaimed water (from Pardee / Meadowood) for dust control, if it becomes available.

(Item 5) SLRWC Nonprofit Formation –

The Name, 'San Luis Rey Watershed Council,' has been reserved for exclusive use by our group only. Cynthia Mallett is currently filing the appropriate paperwork, which will be completed by the November meeting.

(Item 6) Attendee's News:

Ruth Harber / Riverwatch:

- Riverwatch's attorney is going to court on the Olivenhain MWD Plan to truck water to Gregory Canyon Landfill. OMWD might need to mix raw (potable) MWD water with reclaimed water to sell to Gregory Canyon over the next 60 years, as OMWD will not have enough reclaimed water alone to do the job. Olivenhain Home Association is fighting against the number of trucks planned to go through their neighborhood (200 trucks/day).
- (personal) Ruth wrote a letter to Robert Gates (Sec. of Defense) to request that Camp Pendleton stop doing military exercises during the high wind/high heat times, as many of these exercises have led to some recent wildfires.

Wayne Cooley / La Jolla Band of Indians:

- La Jolla Band of Indians is working with SDG&E to plant trees on the Reservation.
- La Jolla Band of Indians is hiring 3 positions: Driver/septic tank removal truck; Manager of the Transfer Station (HHW and CRV Redemption); Air Quality Manager.

David Allen / Fallbrook Land Conservancy:

- US Army Corps of Engineers (ACOE) is clearing arundo in the San Luis Rey River.
Article: http://www.signonsandiego.com/uniontrib/20081025/news_1mc25river.html

Fallbrook Land Conservancy Article in the NC Times:

<http://www.ncetimes.com/articles/2008/10/26/news/inland/fallbrook/z302abf643f38657c882574820000acdc.txt>

Tom Bond / Sierra Club:

- Sierra Club is mapping 3 wilderness areas in the Upper SLR Watershed (Beauty Mountain; Barker Valley—north of Lake Henshaw; Agua Tibia east & west). The map will be sent to Congressman Issa, then onto Feinstein. Tom will bring the map to the November meeting. The Public will be able to get the map through BLM, Ca. Wilderness Coalition, or the US Forest Service.
- There were recent Santa Ana Winds of up to 50 mph; Tom reported that he saw plumes of pm 2.5 in the Pala Basin, from the Pala Raceway track. The Pala Band of Mission Indians Environmental Program has an established air program, and continuously monitors pm 2.5 in the Valley.

(Item 7) Upcoming Meeting Dates/Facilitators:

November 24, 2008

December 22, 2008 – Cancel or Reschedule?