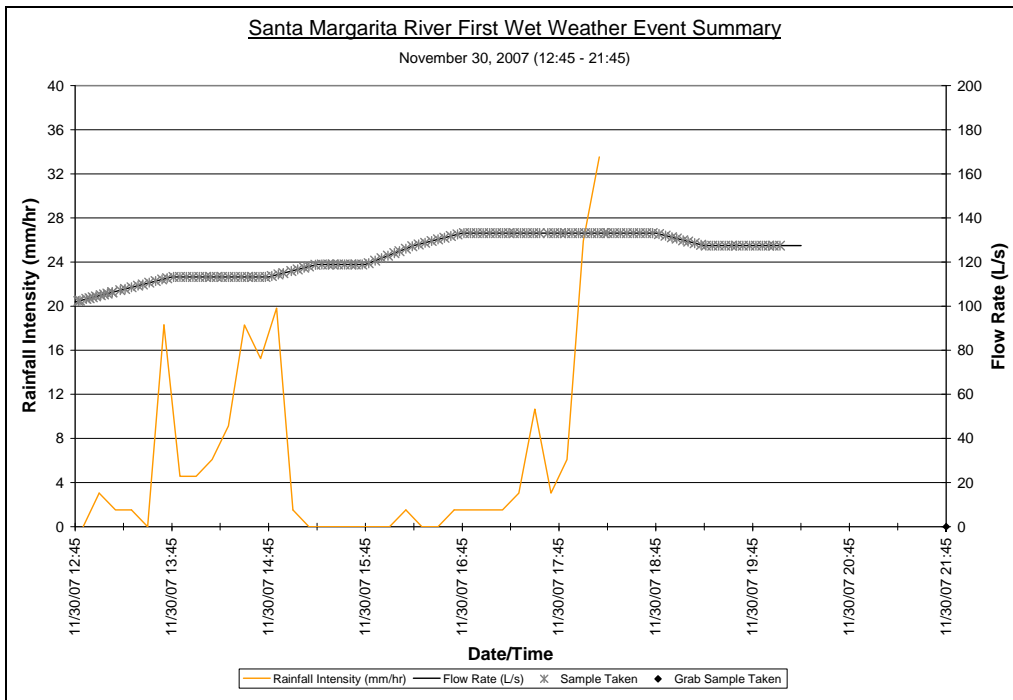
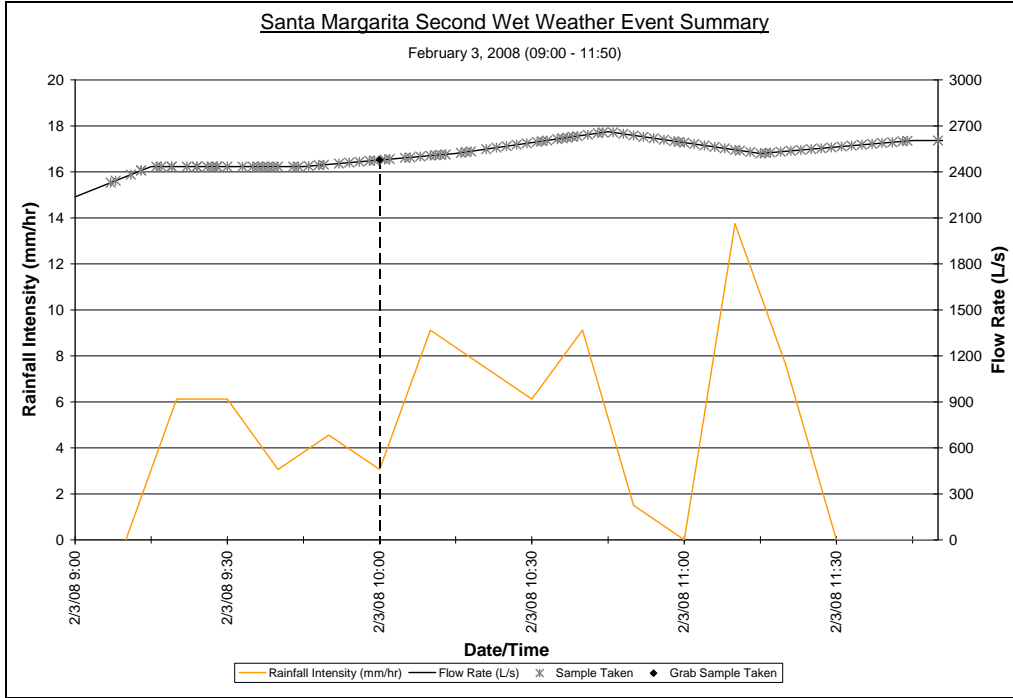
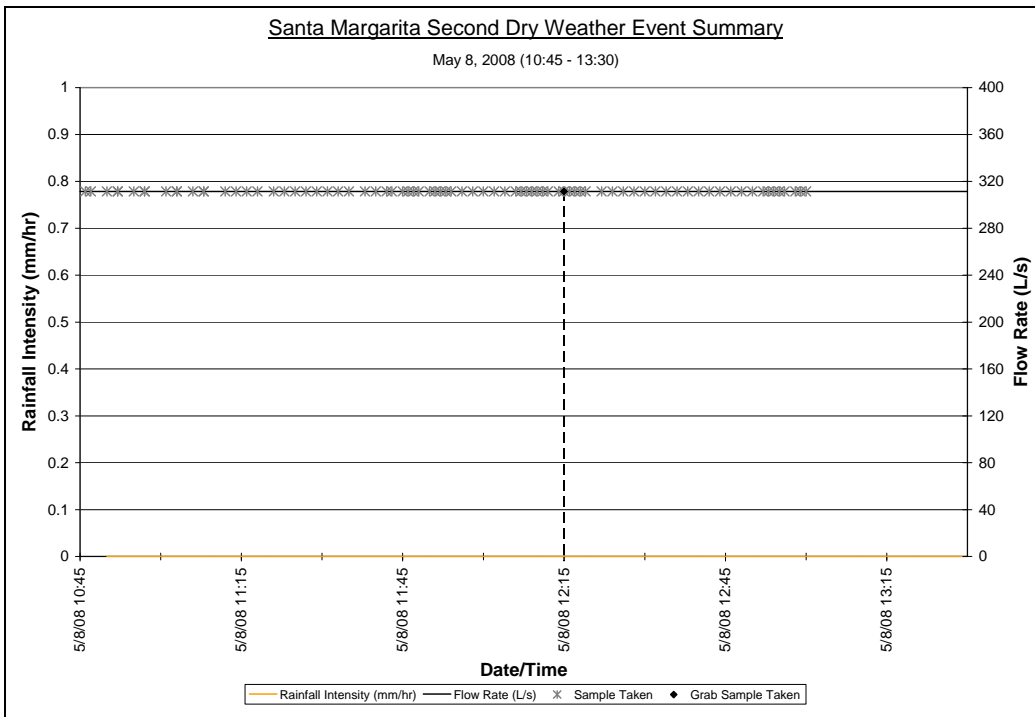
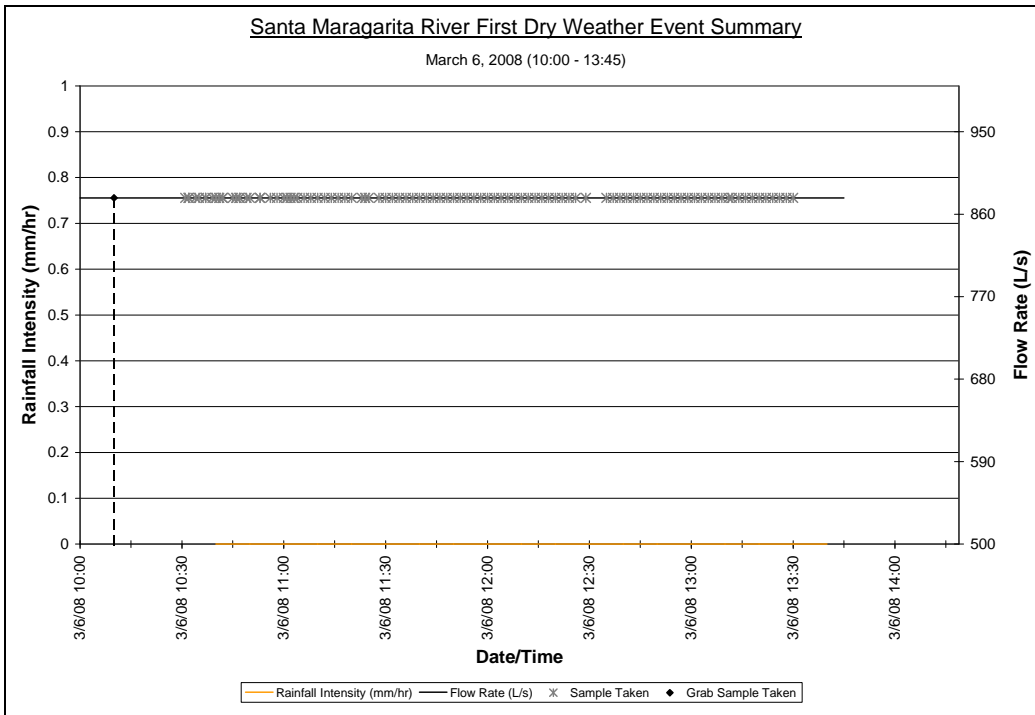
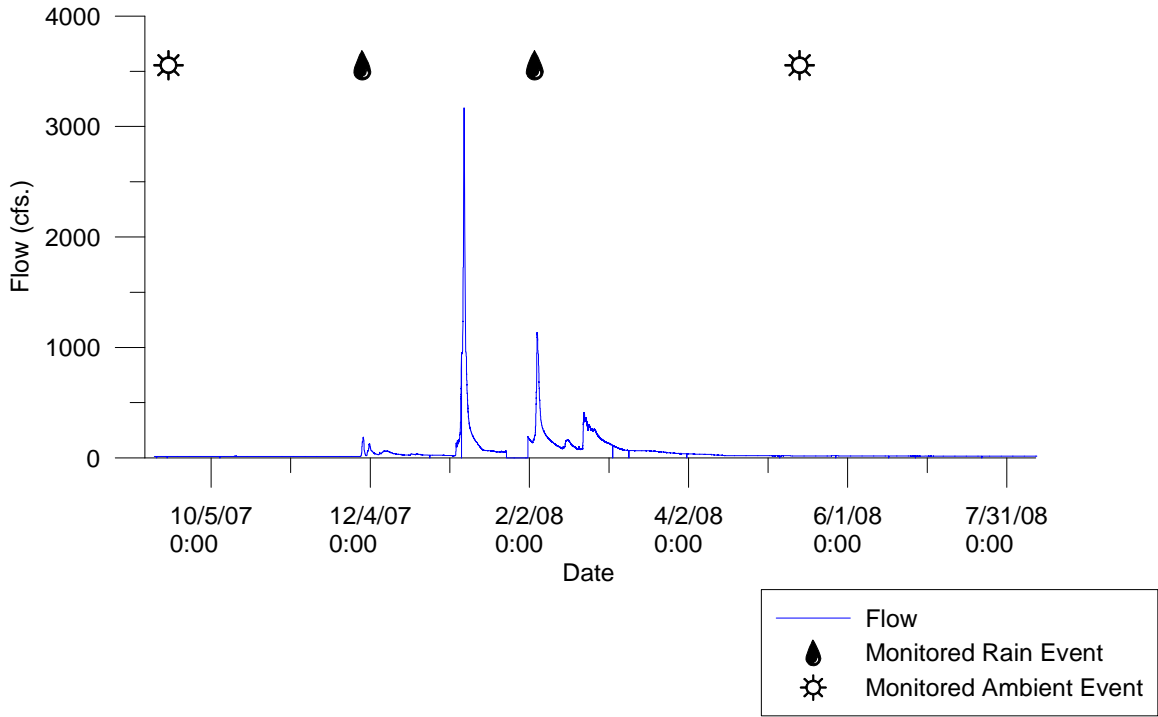


## Santa Margarita River Hydrographs (Graphs provided by M.C.B. Camp Pendleton)

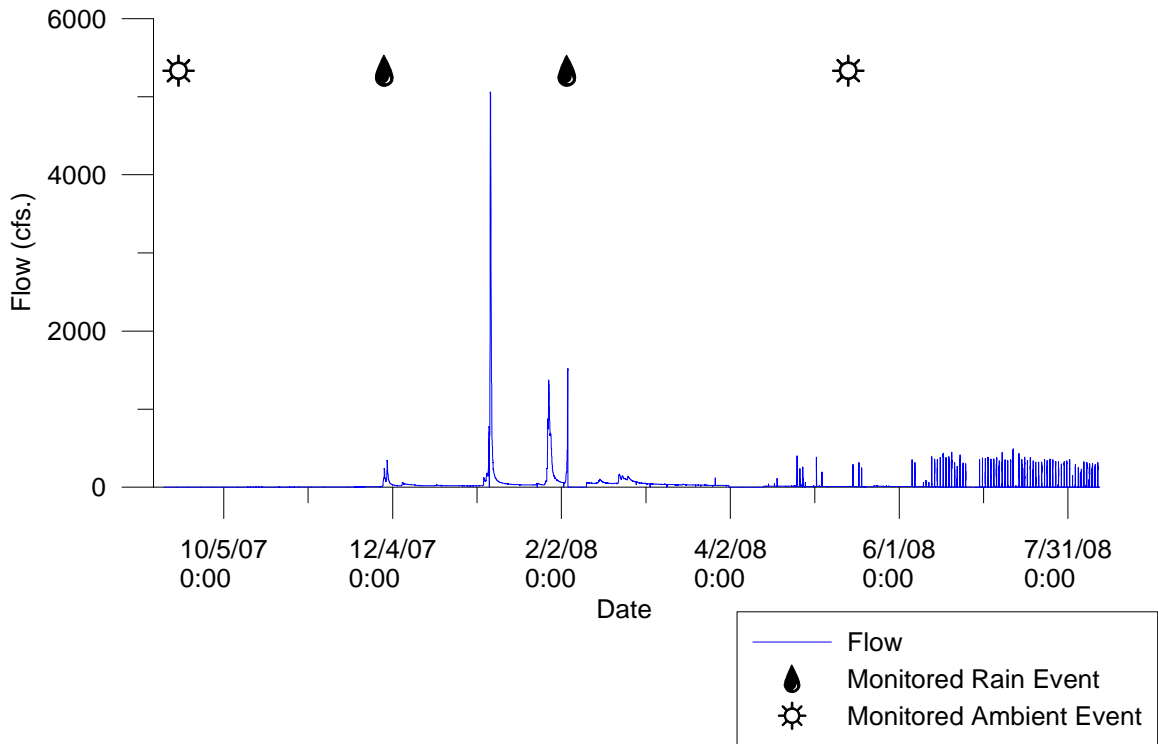




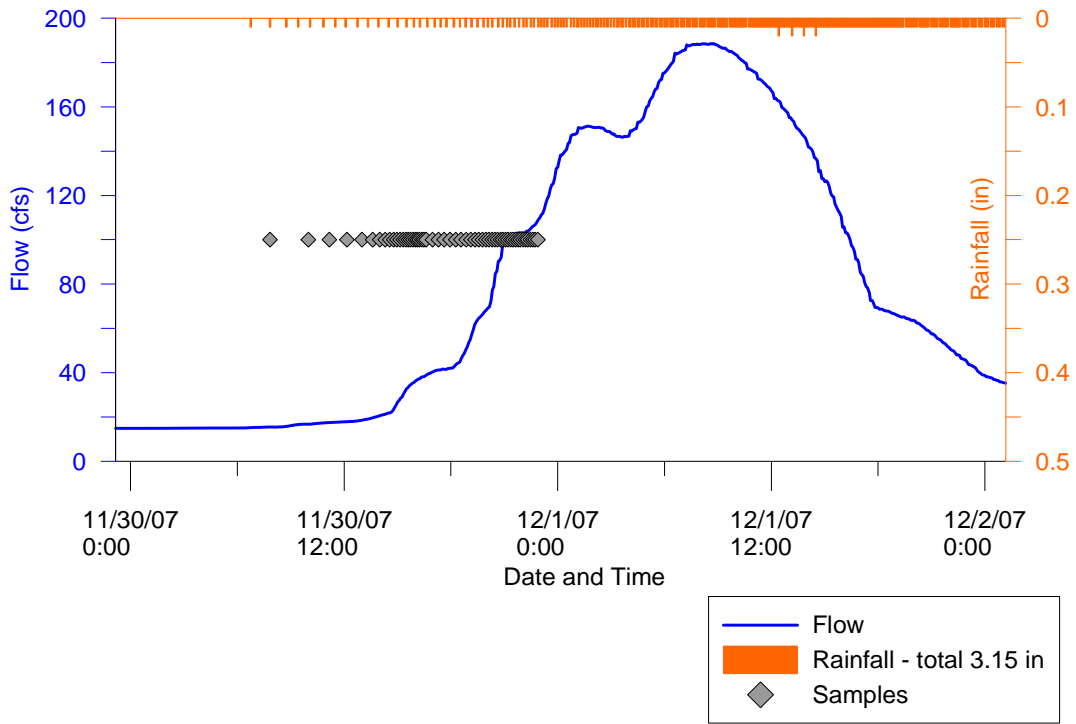
Annual Hydrograph  
SLR MLS  
09/13/2007 - 08/11/2008



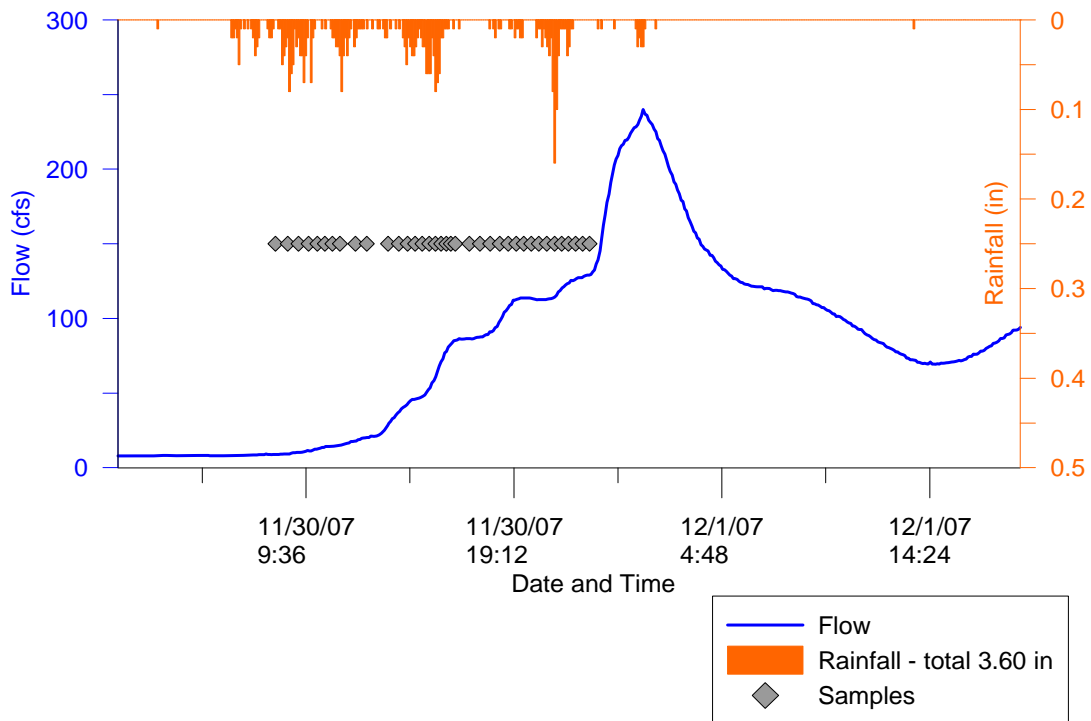
Annual Hydrograph  
SLR TWAS 1  
09/13/2007 - 08/11/2008



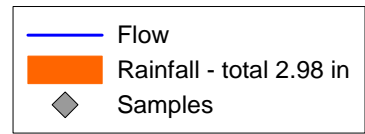
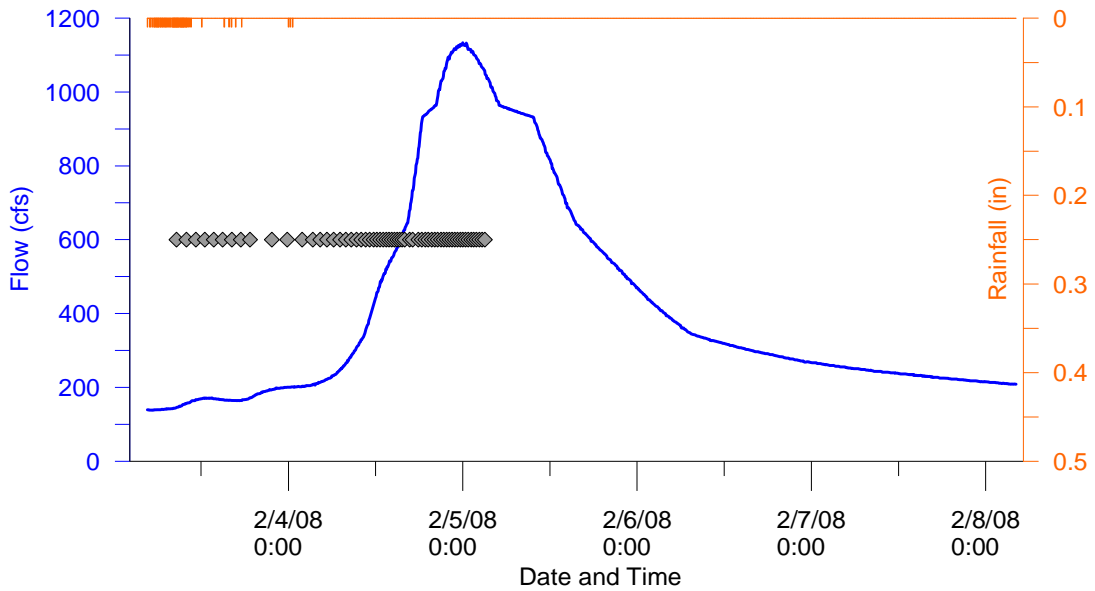
**30-November-2007**  
 (First Wet Event)  
**Hydrograph and Hyetograph**  
**SLR MLS**



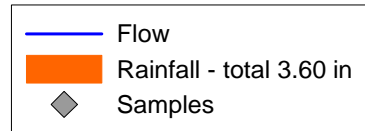
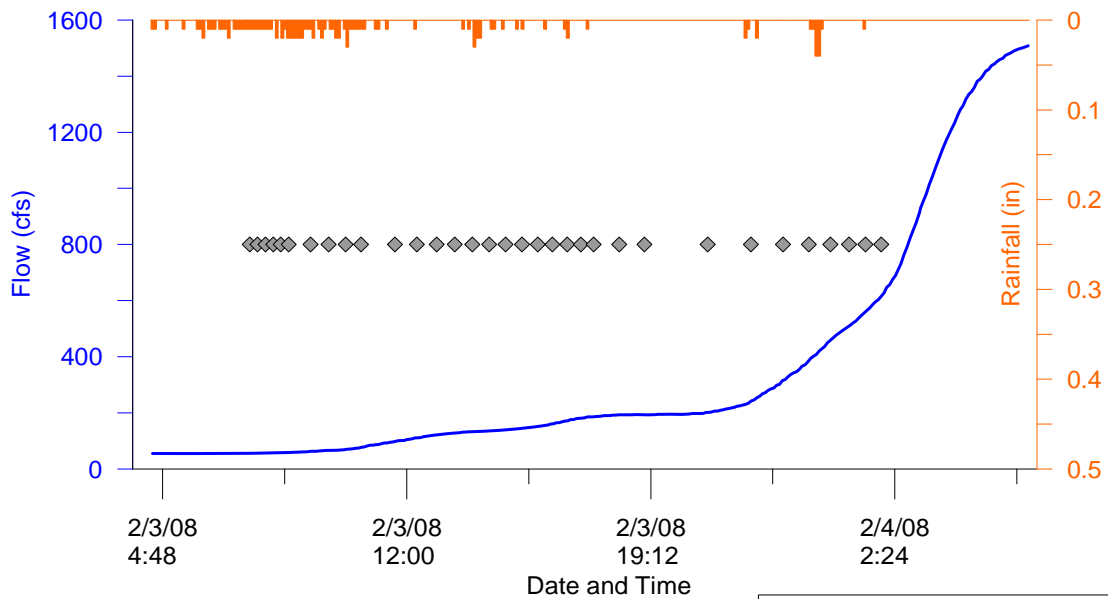
**30-November-2007**  
 (First Wet Event)  
**Hydrograph and Hyetograph**  
**SLR TWAS 1**



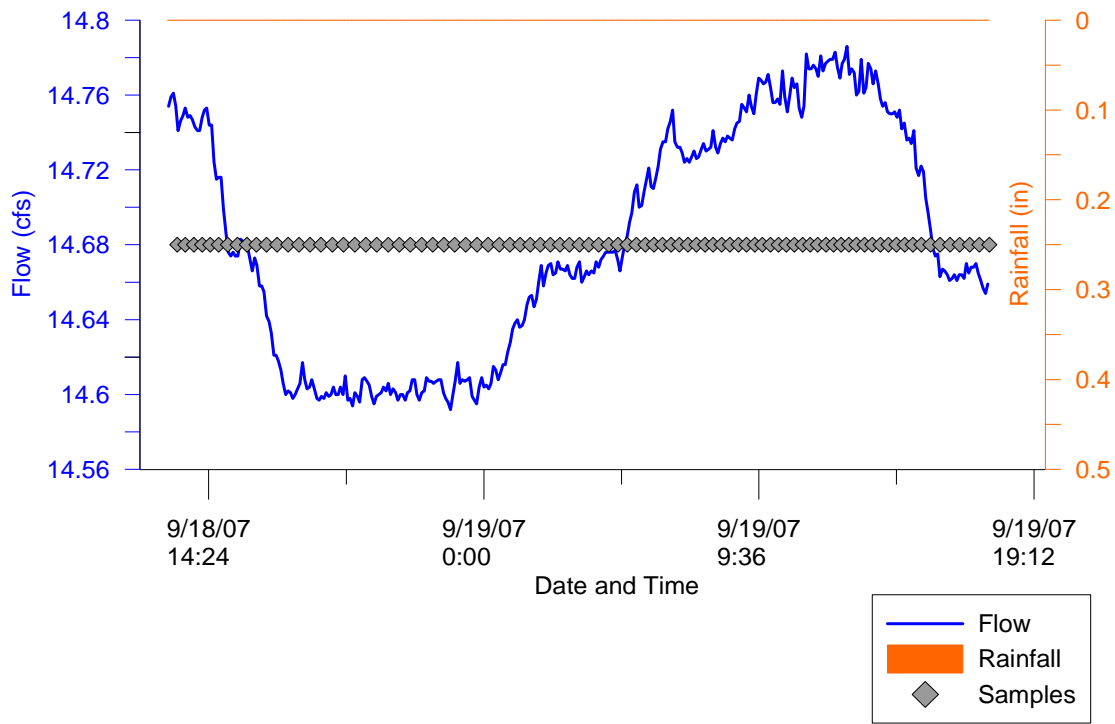
**3-February-2008**  
 (Second Wet Event)  
**Hydrograph and Hyetograph**  
**SLR MLS**



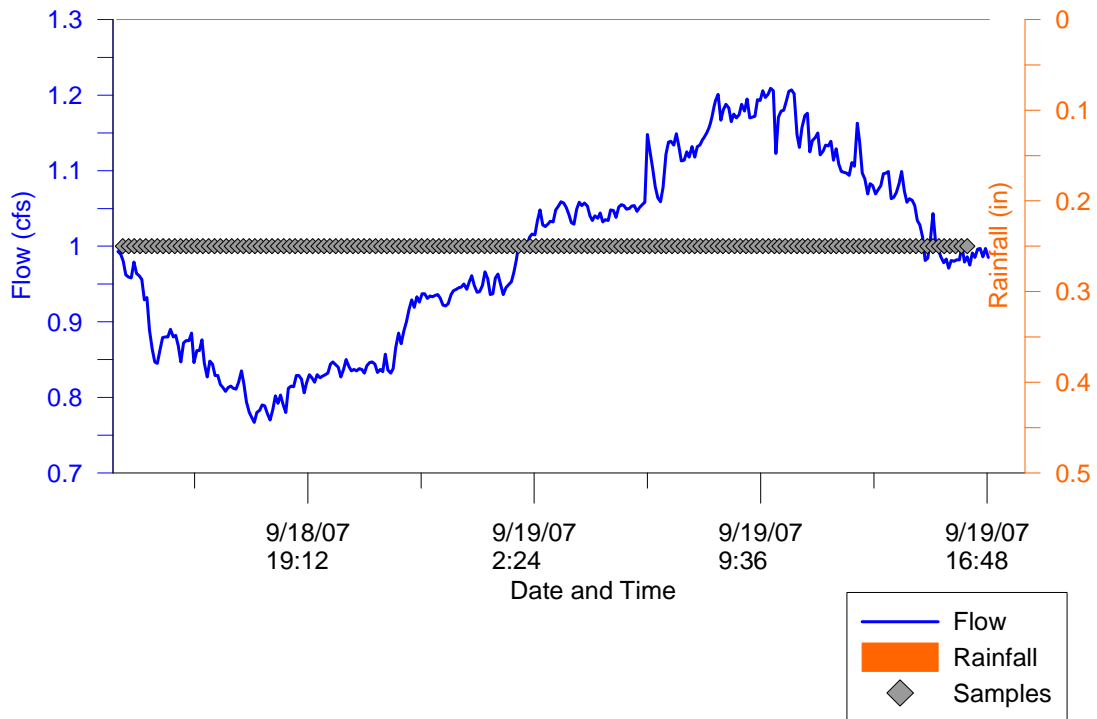
**3-February-2008**  
 (Second Wet Event)  
**Hydrograph and Hyetograph**  
**SLR TWAS 1**



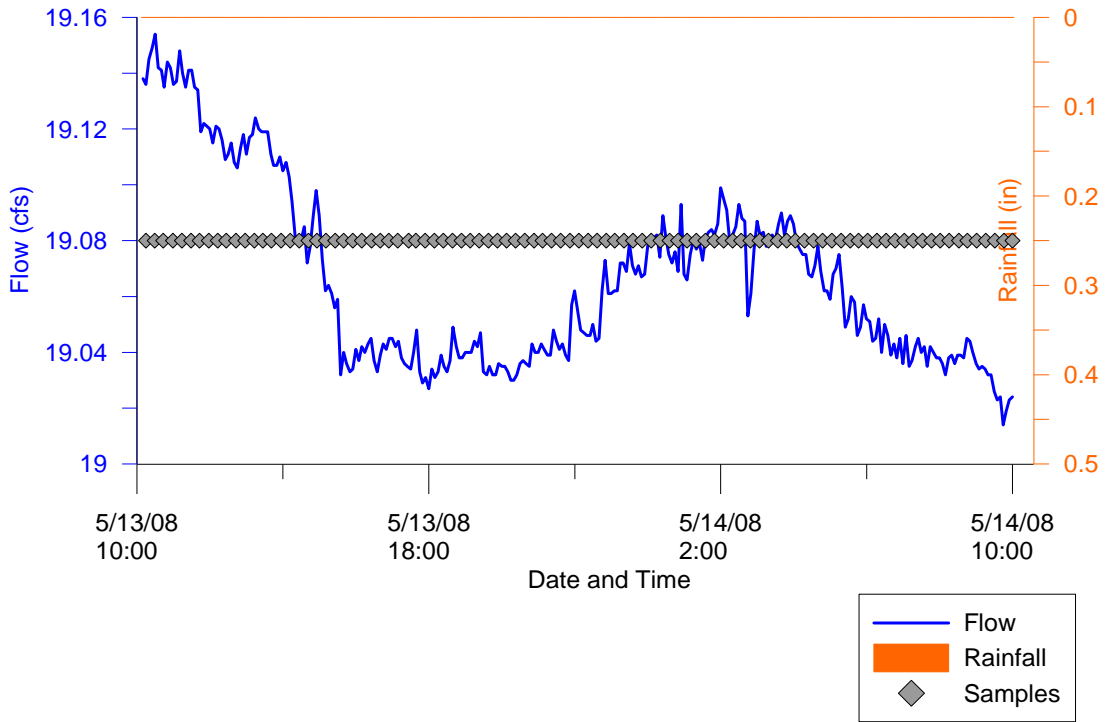
**19-September-2007**  
(First Ambient Event)  
**Hydrograph and Hyetograph**  
**SLR MLS**



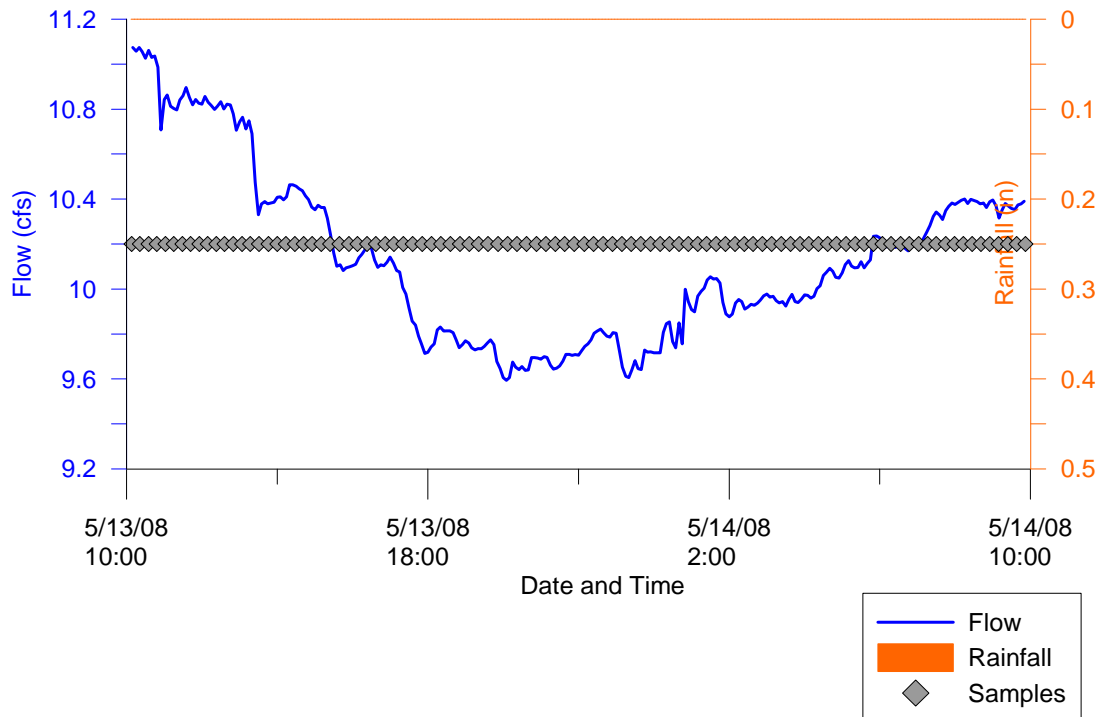
**19-September-2007**  
(First Ambient Event)  
**Hydrograph and Hyetograph**  
**SLR TWAS 1**



**14-May-2008**  
(Second Ambient Event)  
**Hydrograph and Hyetograph**  
**SLR MLS**

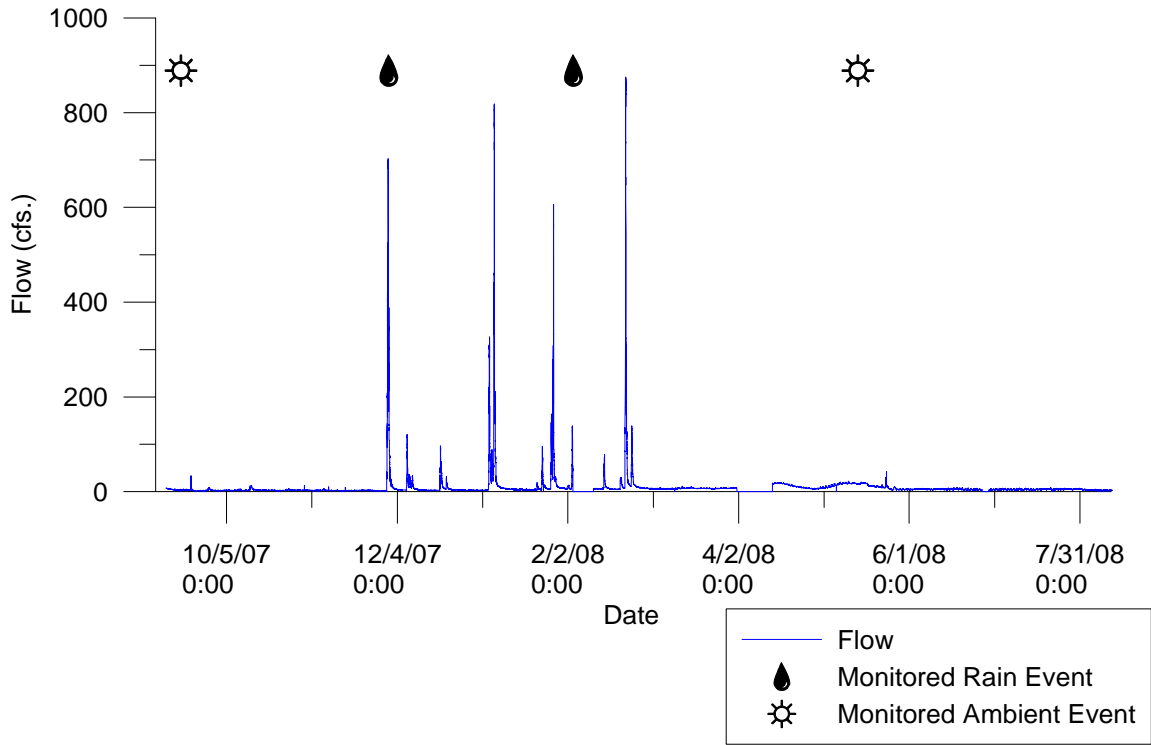


**14-May-2008**  
(Second Ambient Event)  
**Hydrograph and Hyetograph**  
**SLR TWAS 1**

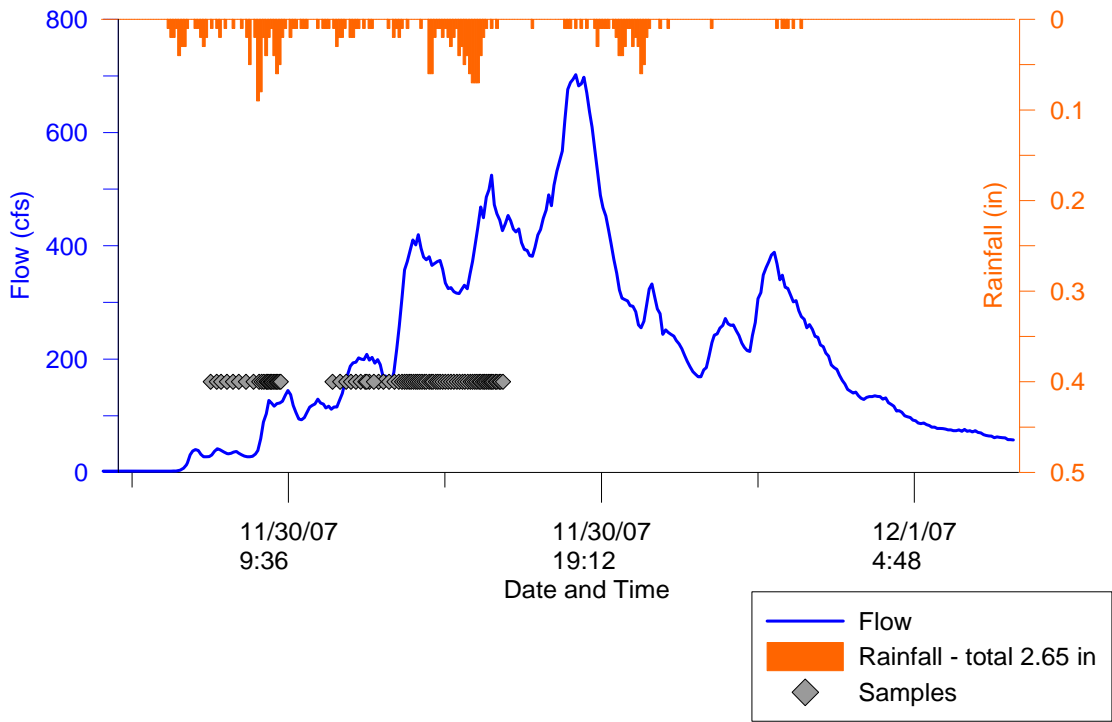


# **Loma Alta**

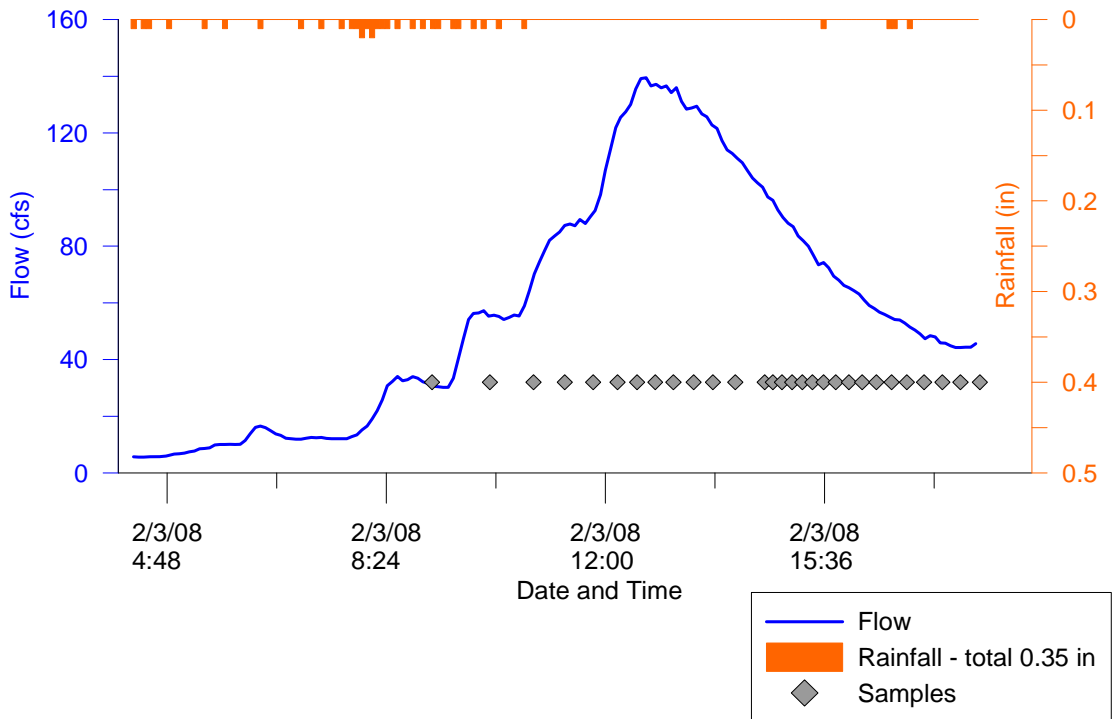
Annual Hydrograph  
LAC TWAS 1  
09/13/2007 - 08/11/2008



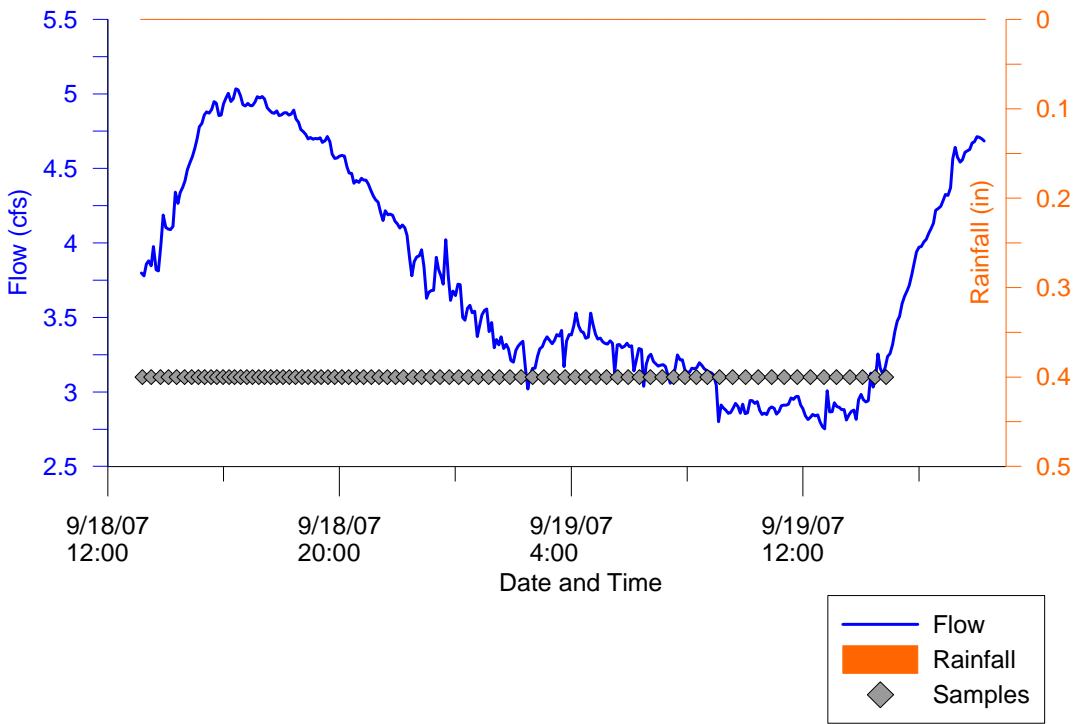
**30-November-2007**  
 (First Wet Event)  
**Hydrograph and Hyetograph**  
**LAC TWAS 1**



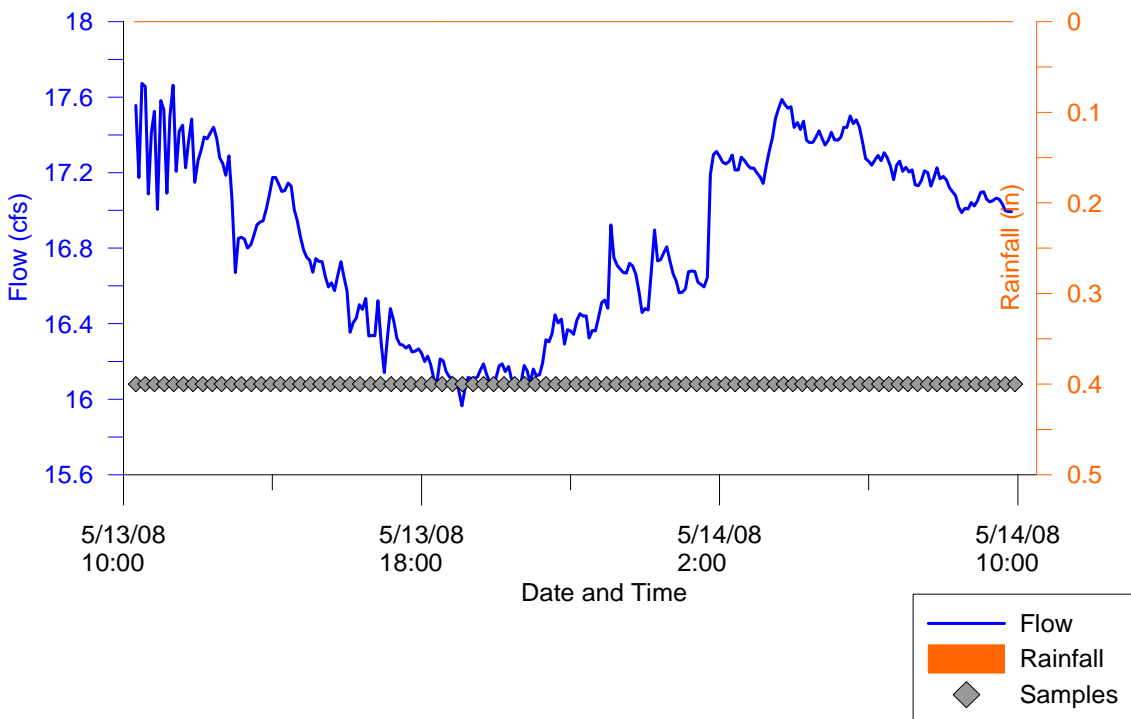
**3-February-2008**  
 (Second Wet Event)  
**Hydrograph and Hyetograph**  
**LAC TWAS 1**



**19-September-2007**  
 (First Ambient Event)  
**Hydrograph and Hyetograph**  
**LAC TWAS 1**

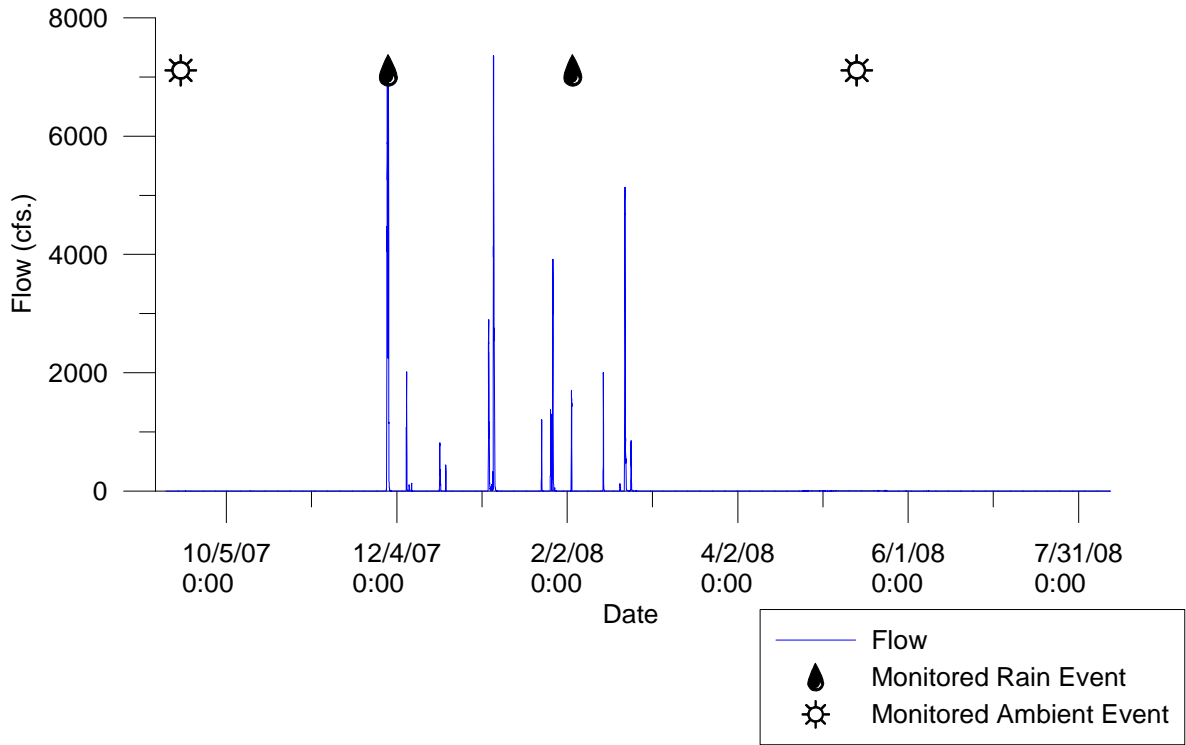


**14-May-2008**  
 (Second Ambient Event)  
**Hydrograph and Hyetograph**  
**LAC TWAS 1**

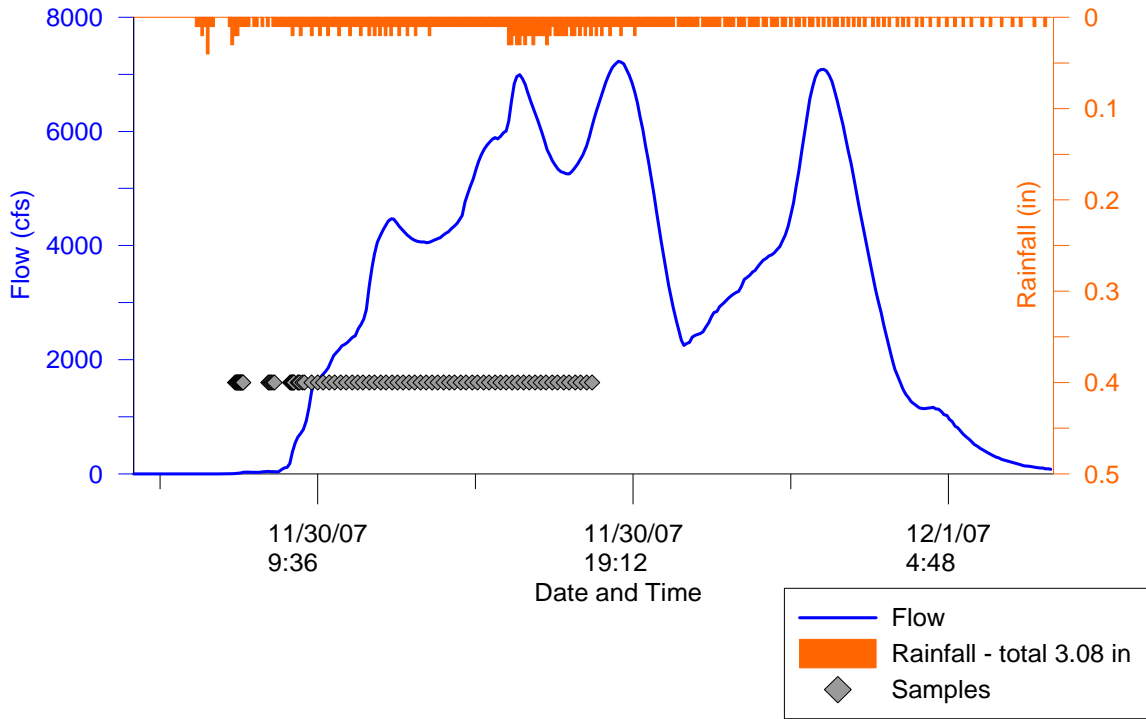


# **Buena Vista Creek**

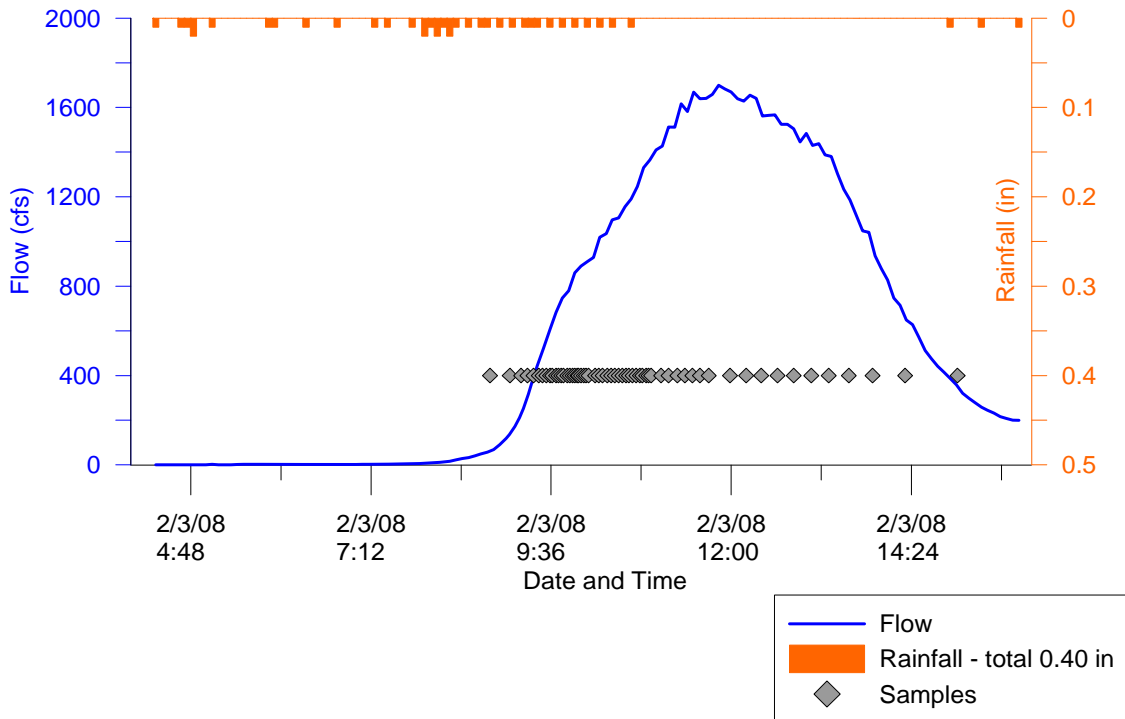
Annual Hydrograph  
BVC TWAS 1  
09/13/2007 - 08/11/2008



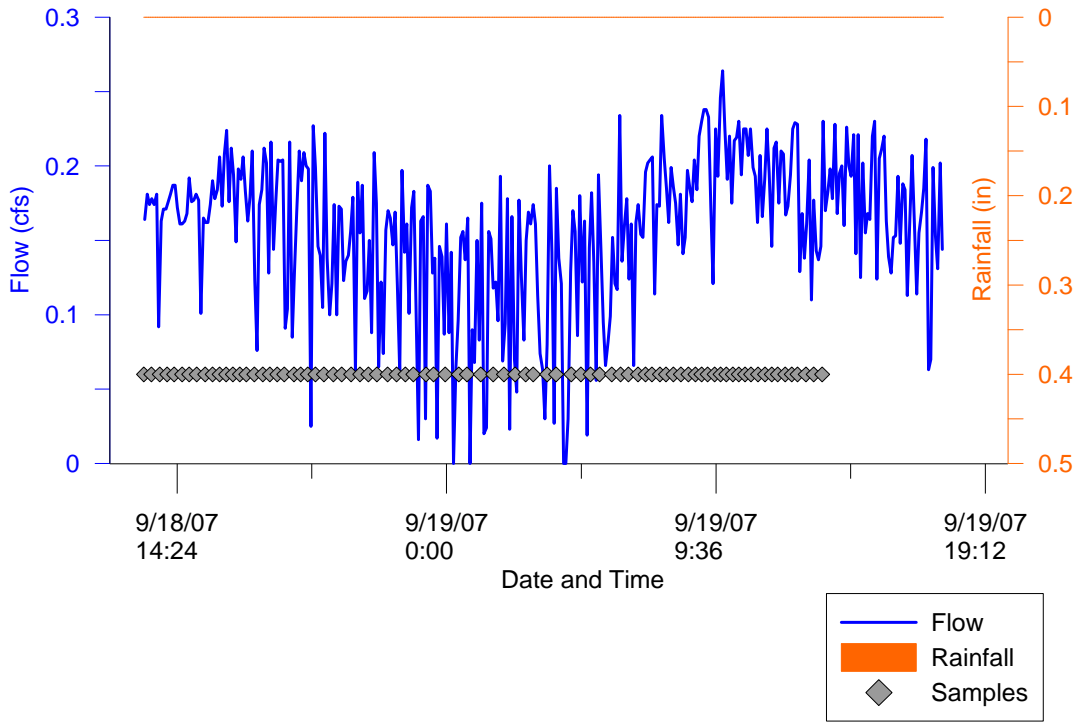
**30-November-2007**  
 (First Wet Event)  
**Hydrograph and Hyetograph**  
**BVC TWAS 1**



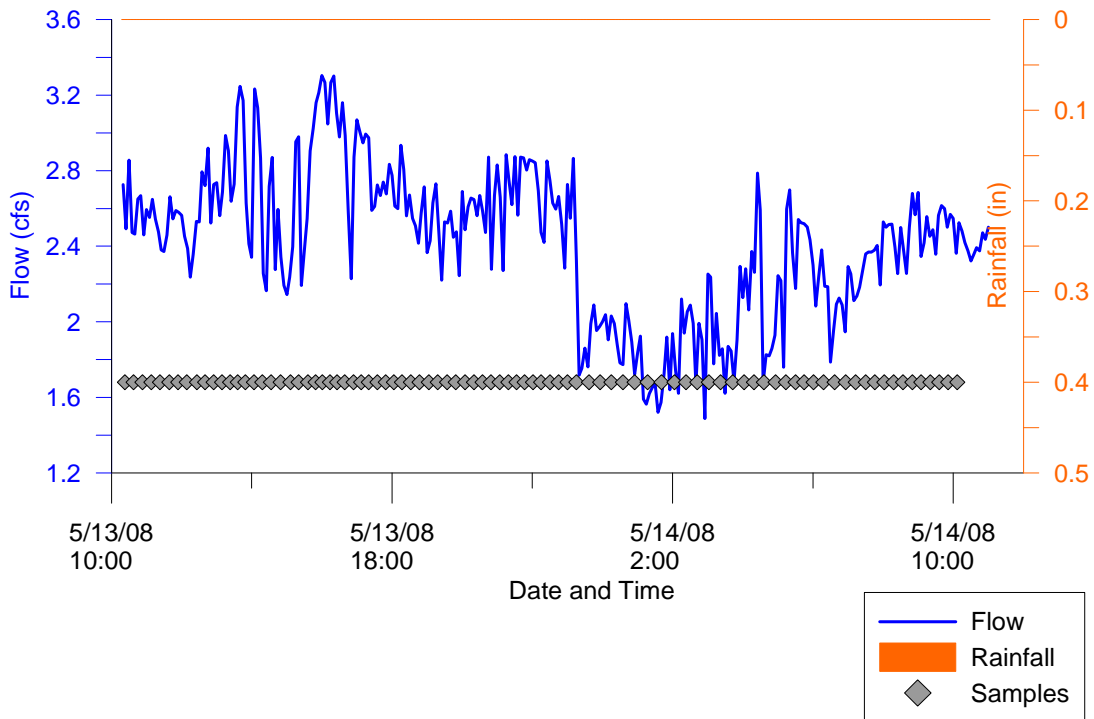
**3-February-2008**  
 (Second Wet Event)  
**Hydrograph and Hyetograph**  
**BVC TWAS 1**



**19-September-2007**  
(First Ambient Event)  
**Hydrograph and Hyetograph**  
**BVC TWAS 1**

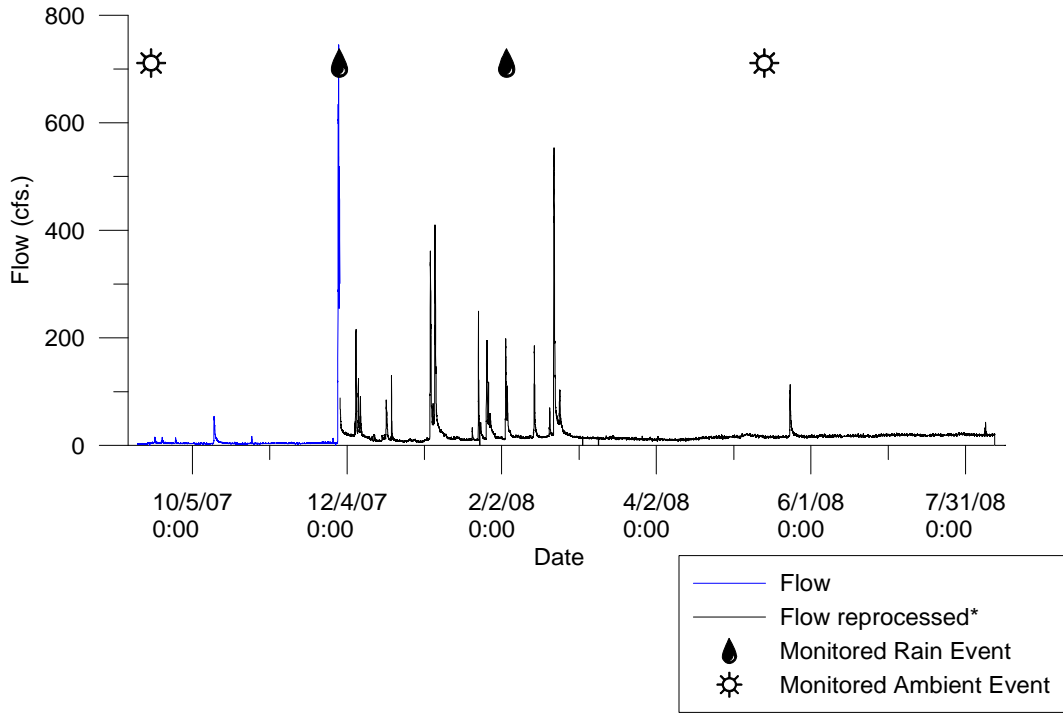


**14-May-2008**  
(Second Ambient Event)  
**Hydrograph and Hyetograph**  
**BVC TWAS 1**



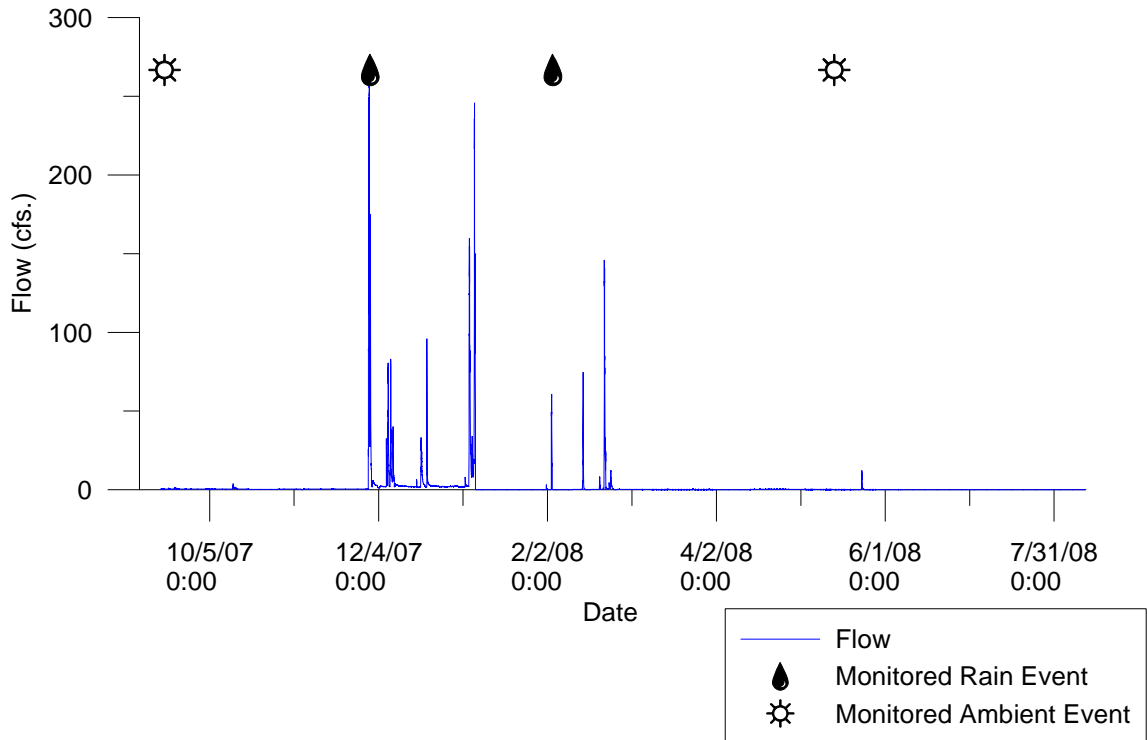
# **Agua Hedionda**

Annual Hydrograph  
 AHC MLS  
 09/13/2007 - 08/11/2008

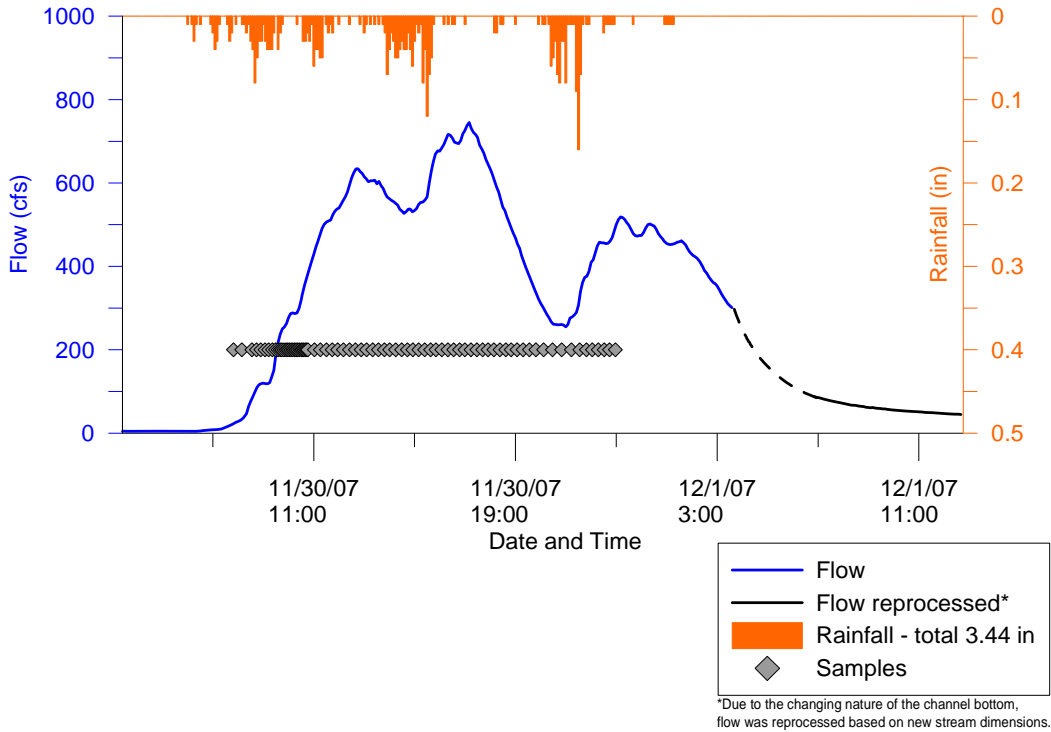


\*Due to the changing nature of the channel bottom, flow was reprocessed based on new stream dimensions.

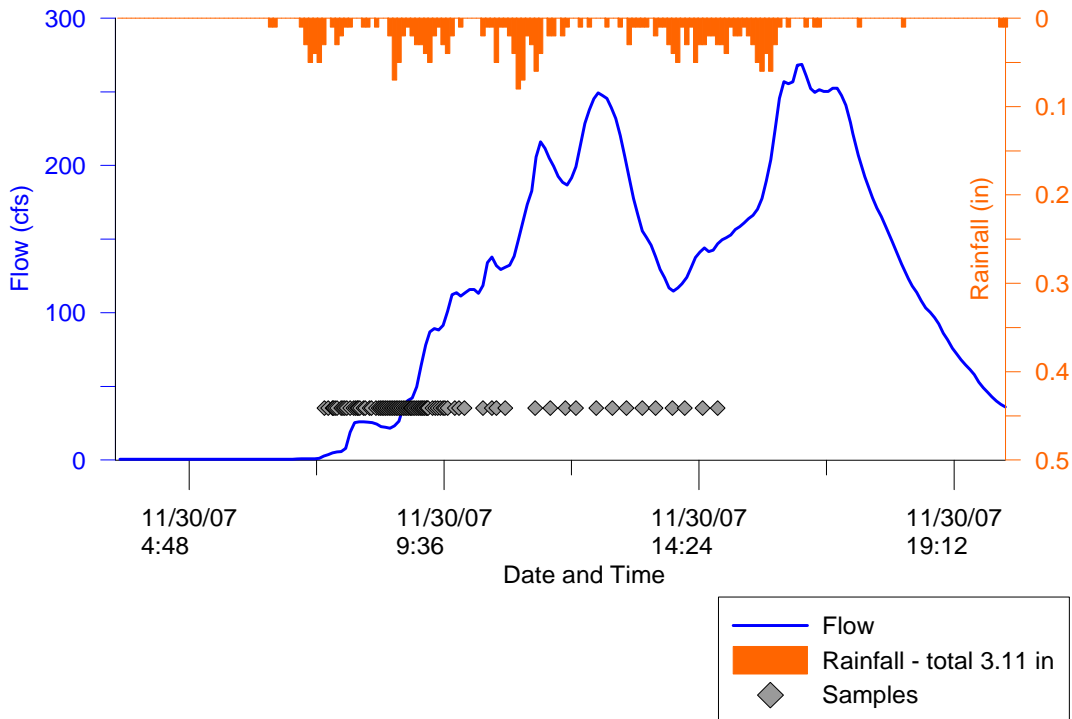
Annual Hydrograph  
 AHC TWAS 1  
 09/13/2007 - 08/11/2008



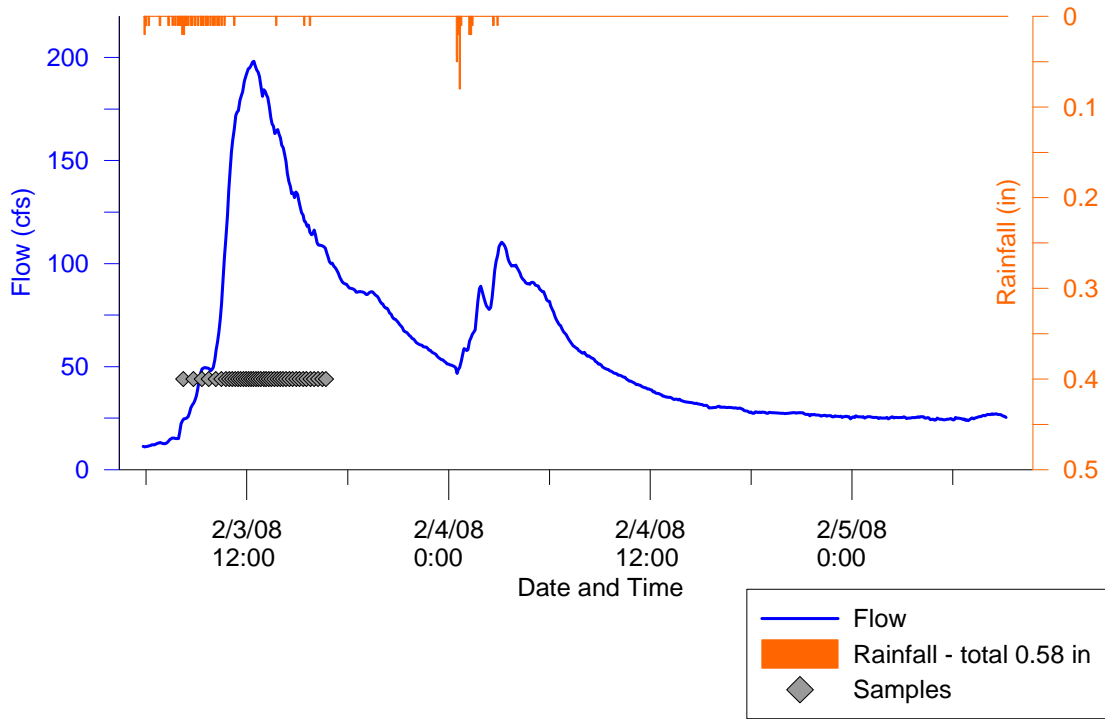
**30-November-2007**  
 (First Wet Event)  
**Hydrograph and Hyetograph**  
**AHC MLS**



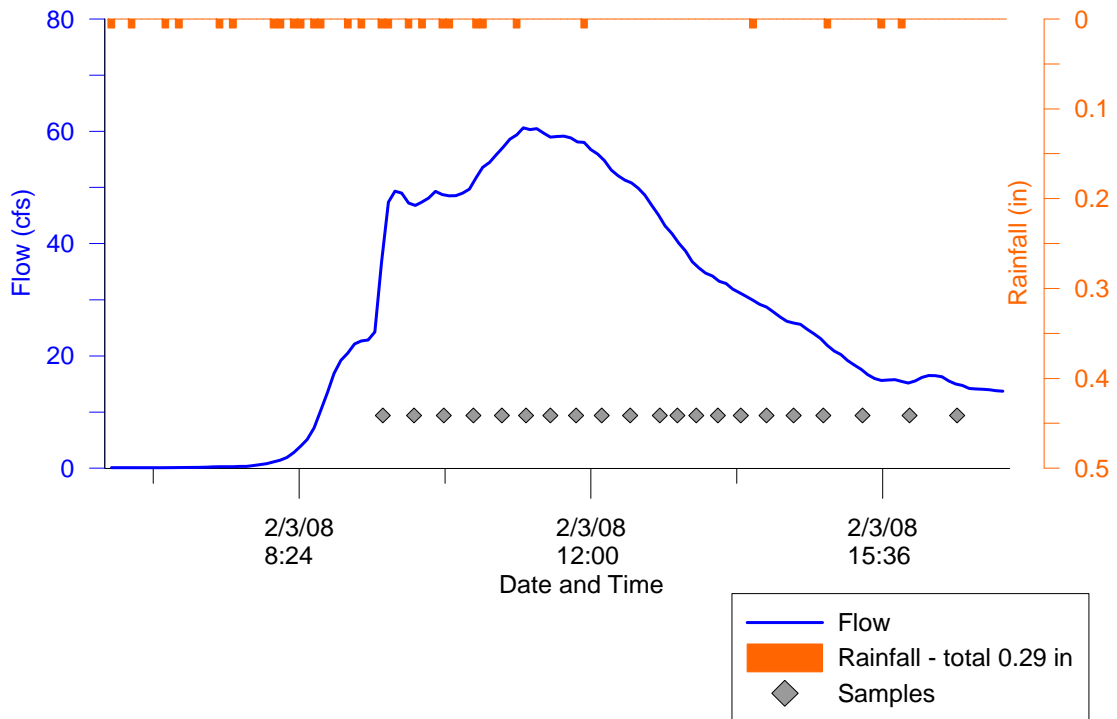
**30-November-2007**  
 (First Wet Event)  
**Hydrograph and Hyetograph**  
**AHC TWAS 1**



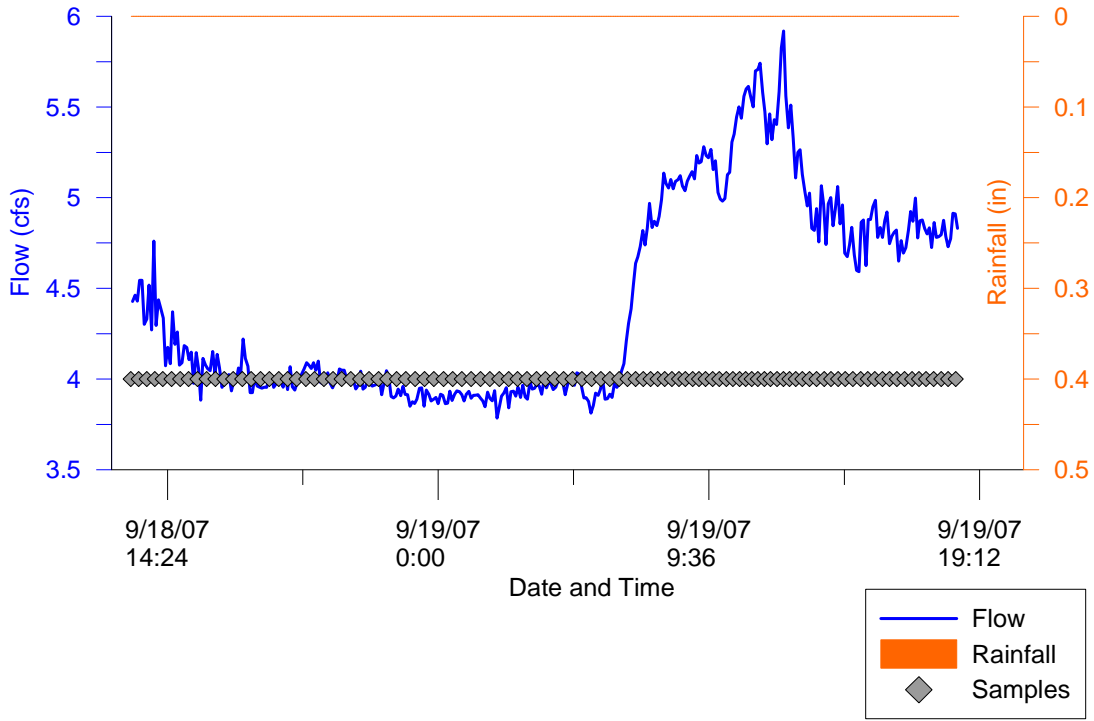
**3-February-2008**  
 (Second Wet Event)  
**Hydrograph and Hyetograph**  
**AHC MLS**



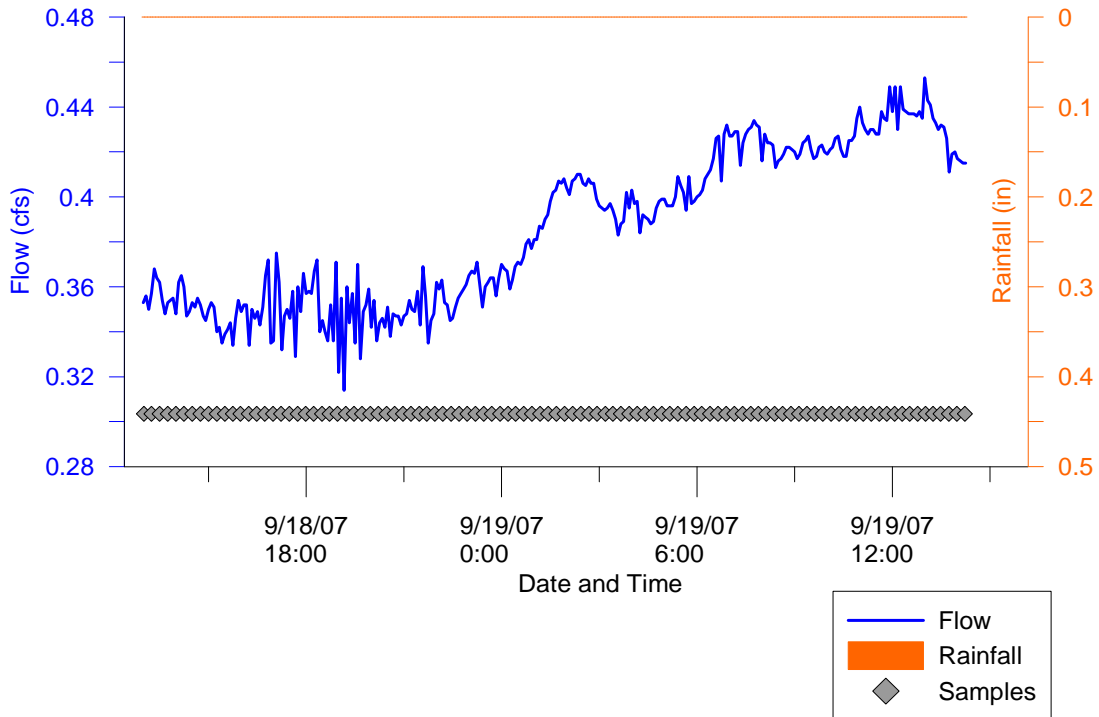
**3-February-2008**  
 (Second Wet Event)  
**Hydrograph and Hyetograph**  
**AHC TWAS 1**



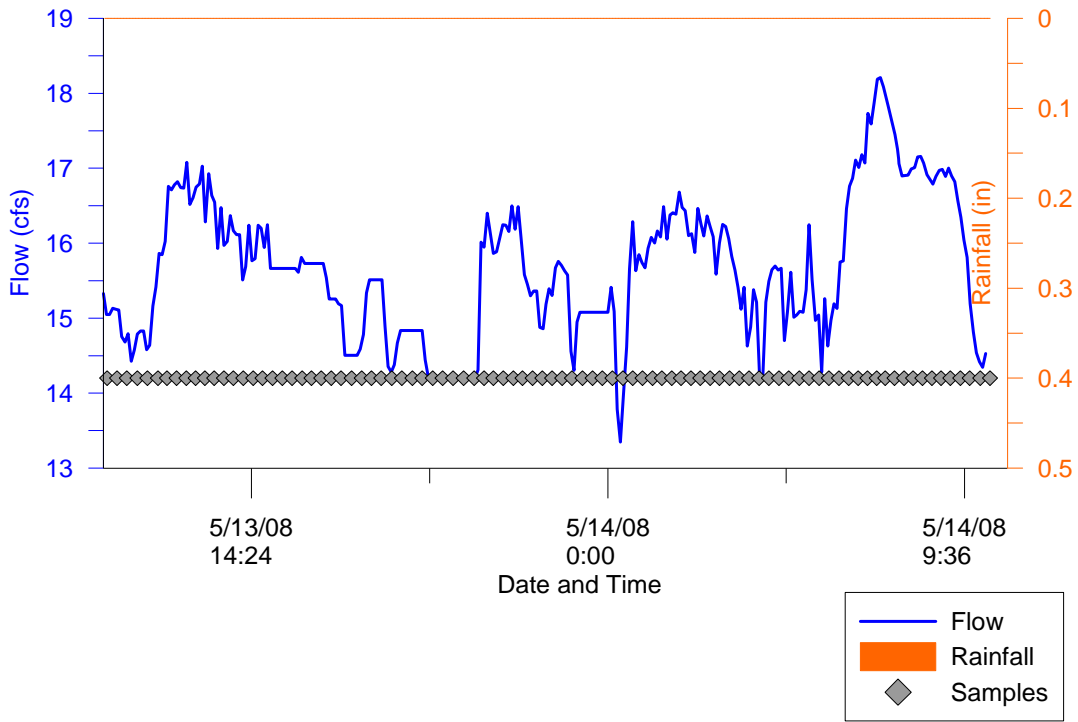
**19-September-2007**  
(First Ambient Event)  
**Hydrograph and Hyetograph**  
**AHC MLS**



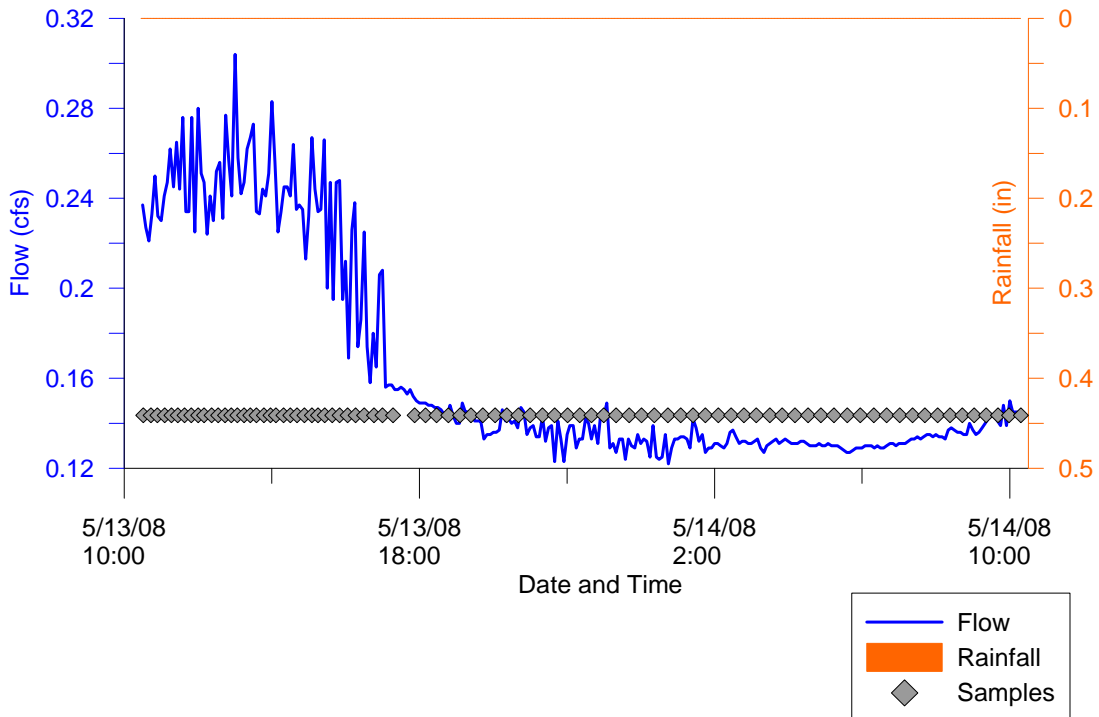
**19-September-2007**  
(First Ambient Event)  
**Hydrograph and Hyetograph**  
**AHC TWAS 1**



**14-May-2008**  
(Second Ambient Event)  
**Hydrograph and Hyetograph**  
**AHC MLS**

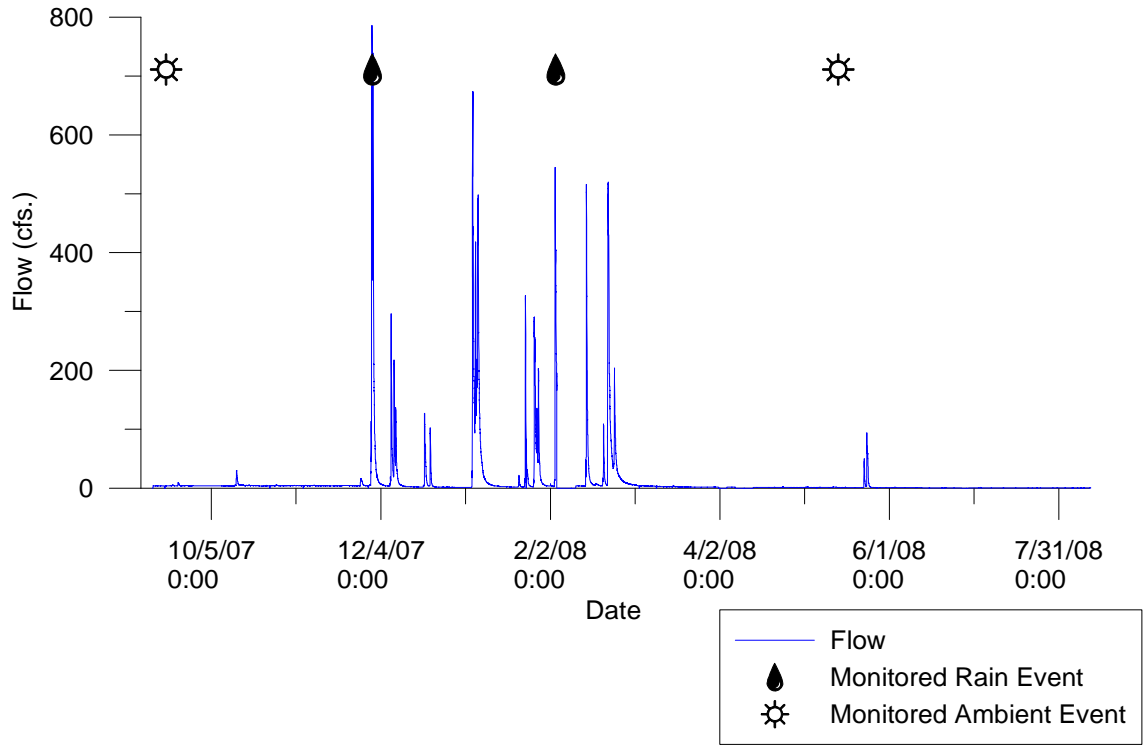


**14-May-2008**  
(Second Ambient Event)  
**Hydrograph and Hyetograph**  
**AHC TWAS 1**

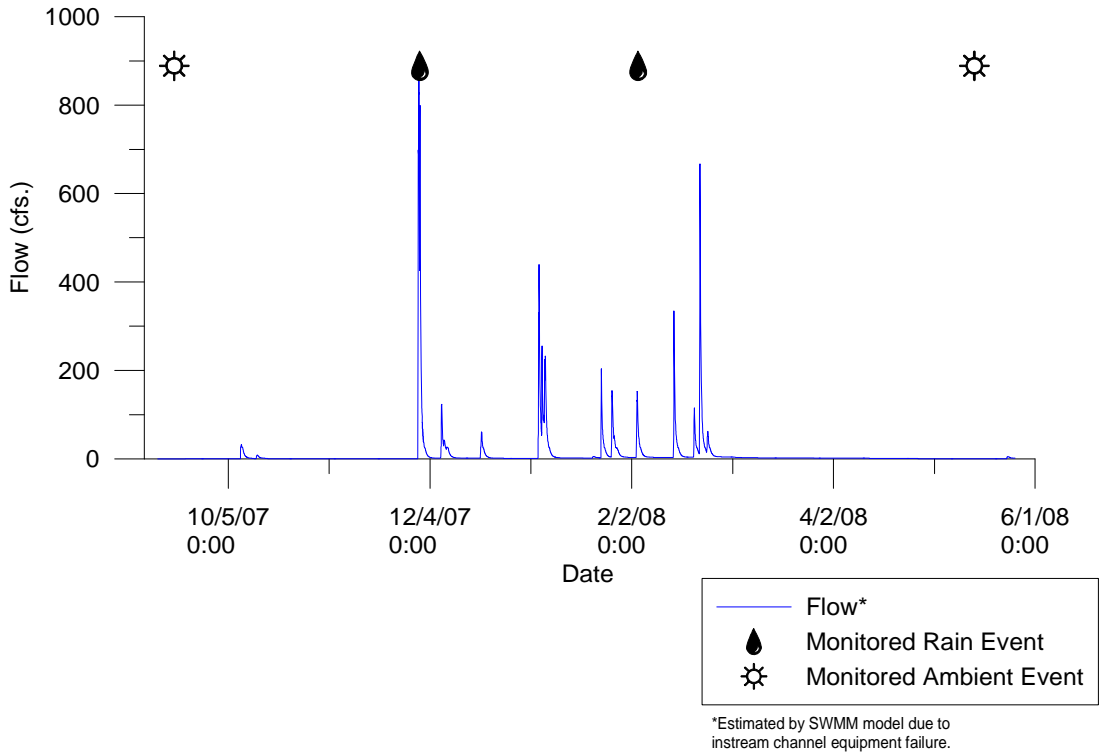


# **Escondido Creek**

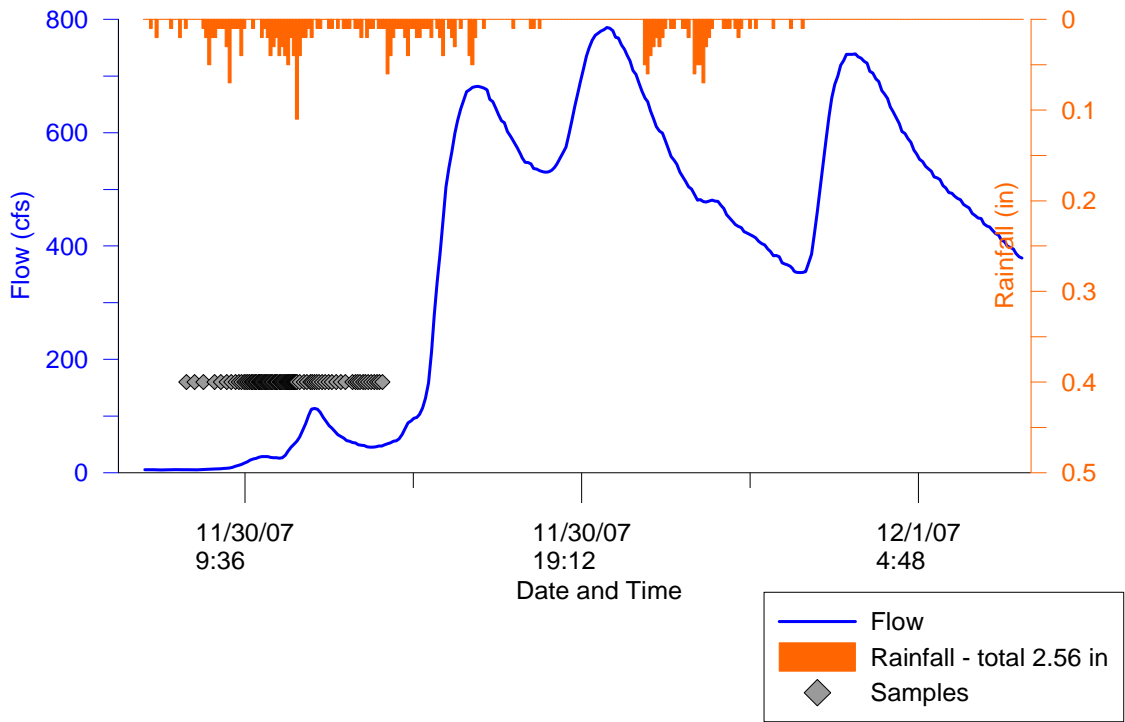
Annual Hydrograph  
EC MLS  
09/13/2007 - 08/11/2008



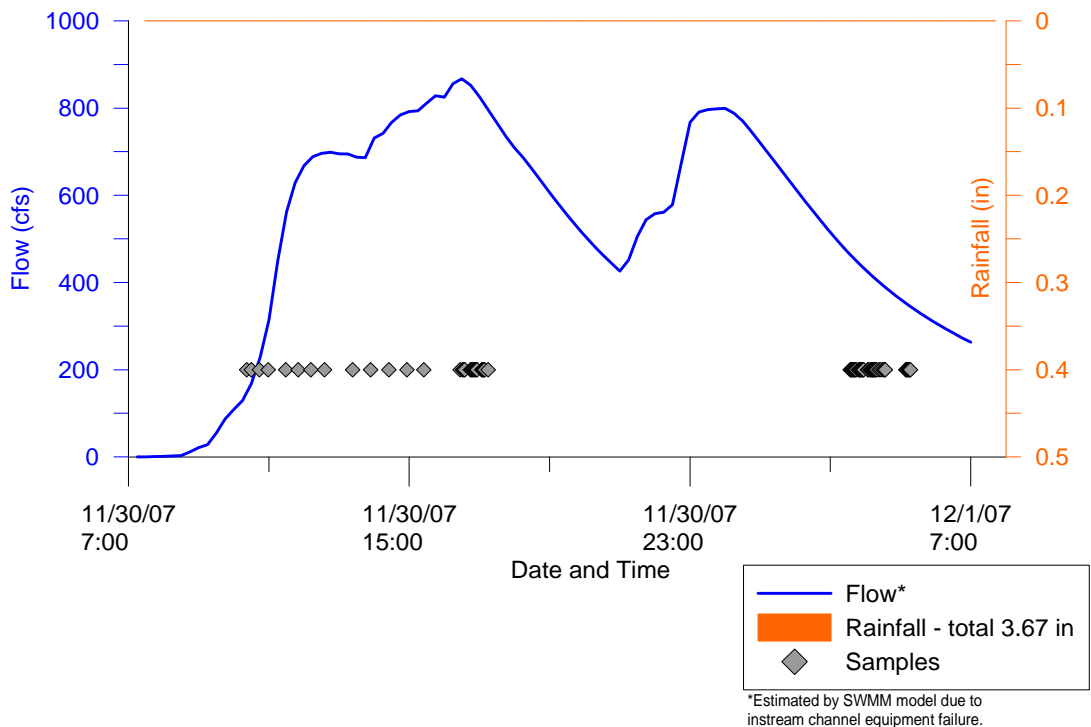
Annual Hydrograph  
EC TWAS 1  
09/14/2007 - 06/1/2008



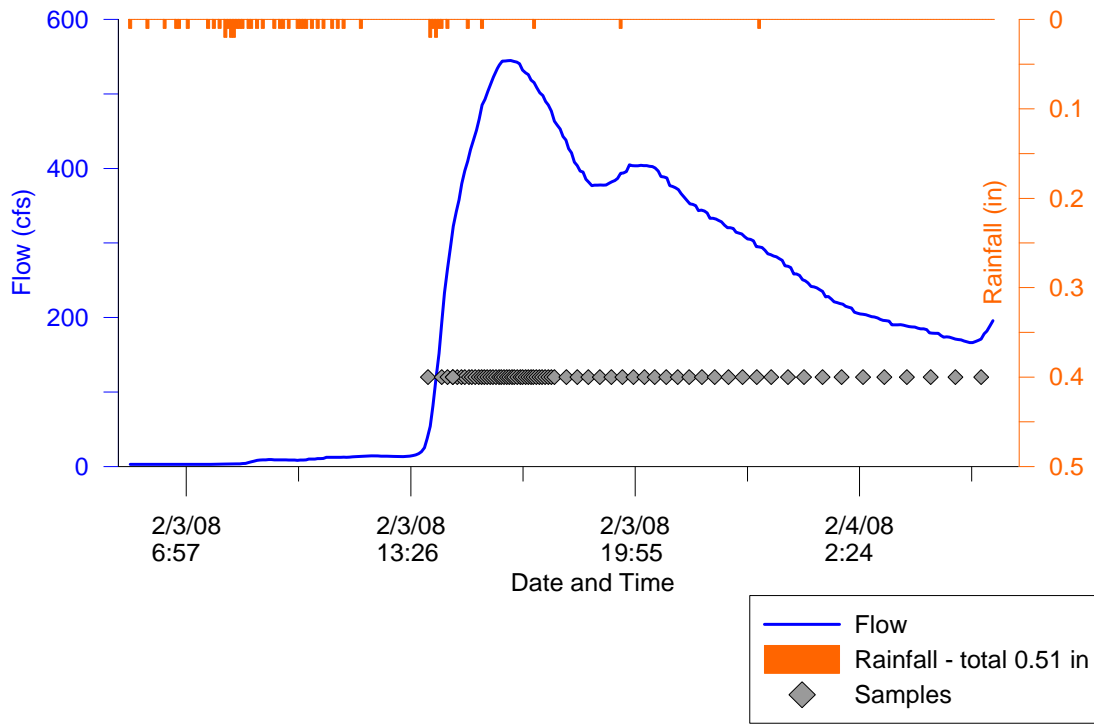
**30-November-2007**  
 (First Wet Event)  
**Hydrograph and Hyetograph**  
**EC MLS**



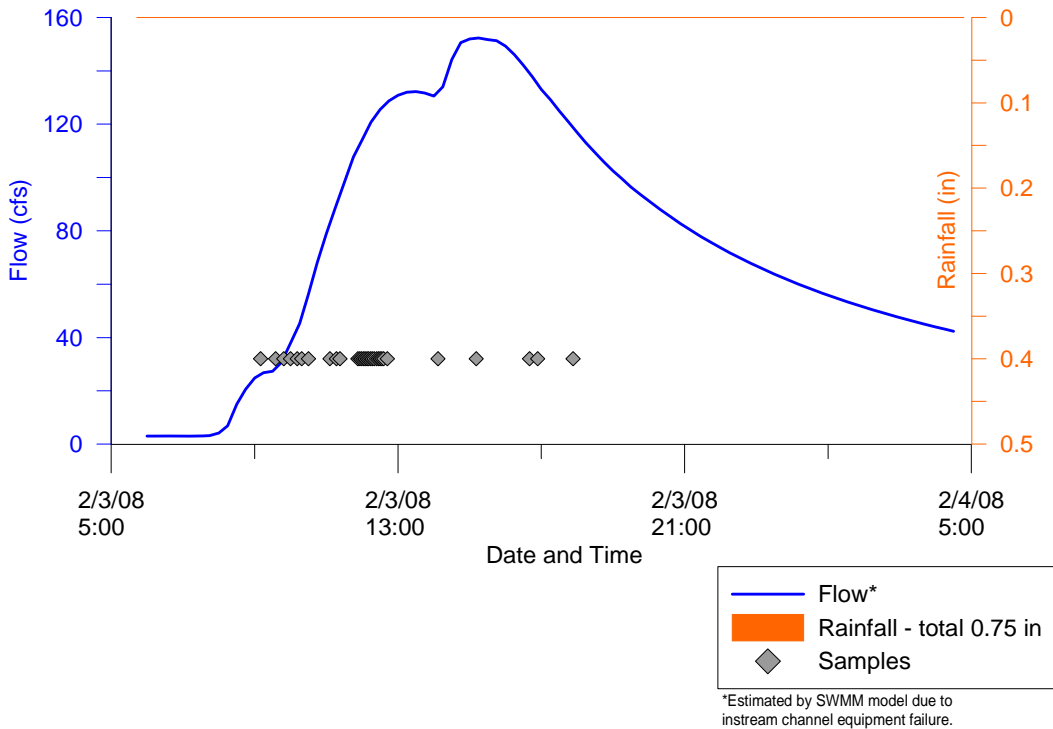
**30-November-2007**  
 (First Wet Event)  
**Hydrograph and Hyetograph**  
**EC TWAS 1**



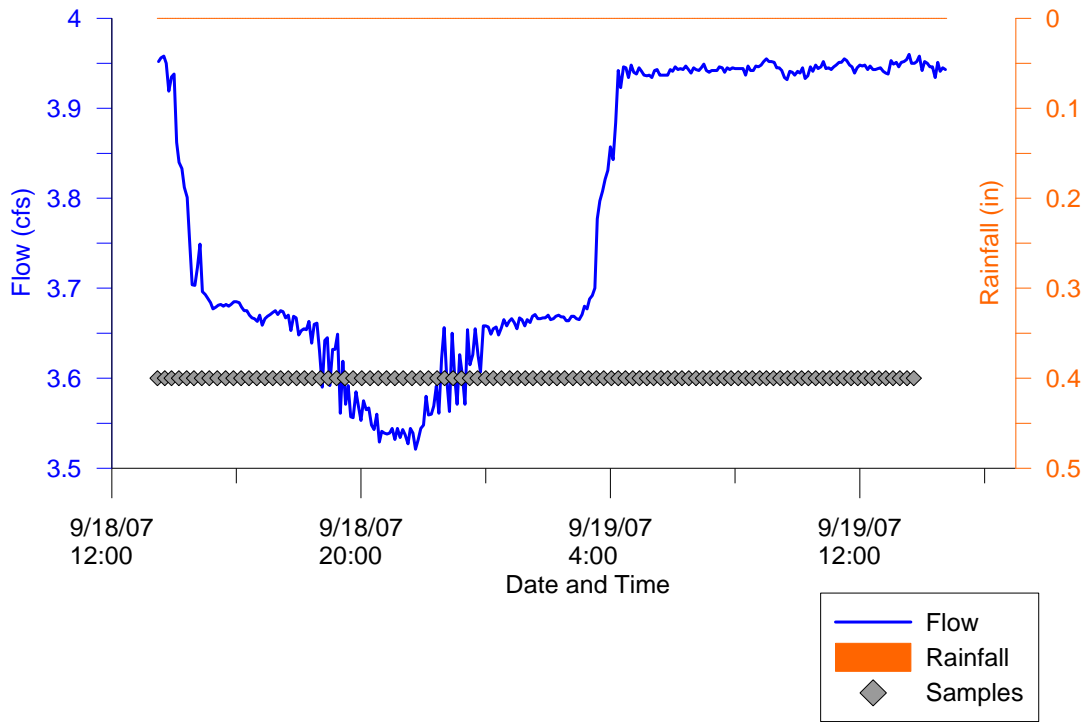
**3-February-2008**  
(Second Wet Event)  
**Hydrograph and Hyetograph**  
**EC MLS**



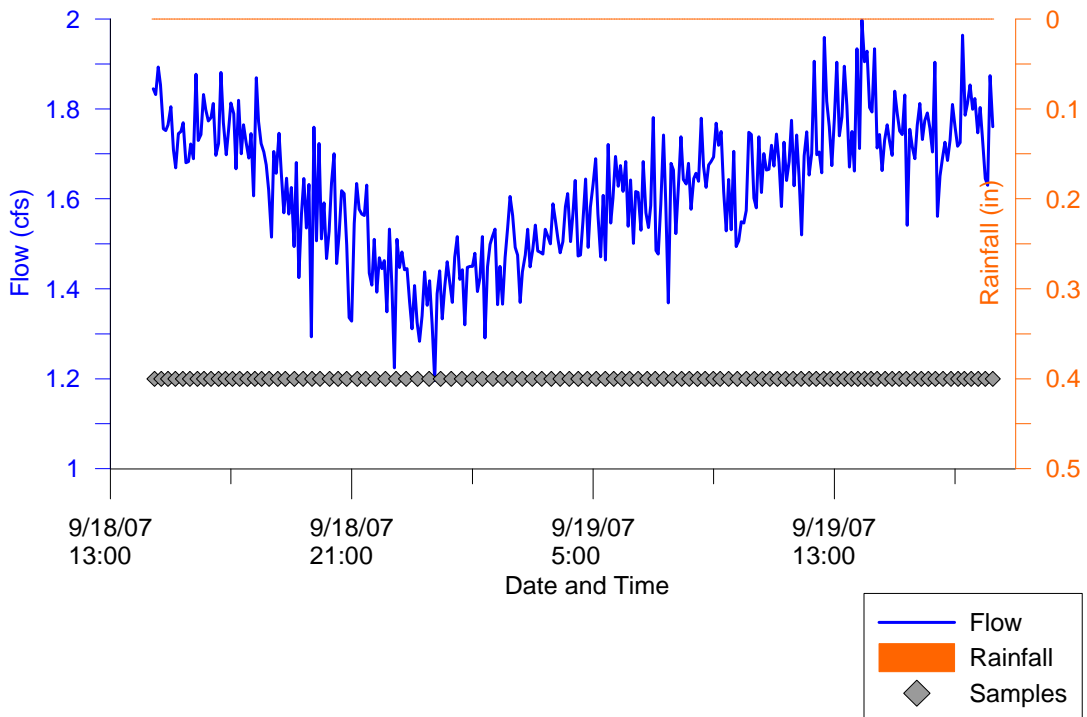
**3-February-2008**  
(Second Wet Event)  
**Hydrograph and Hyetograph**  
**EC TWAS 1**



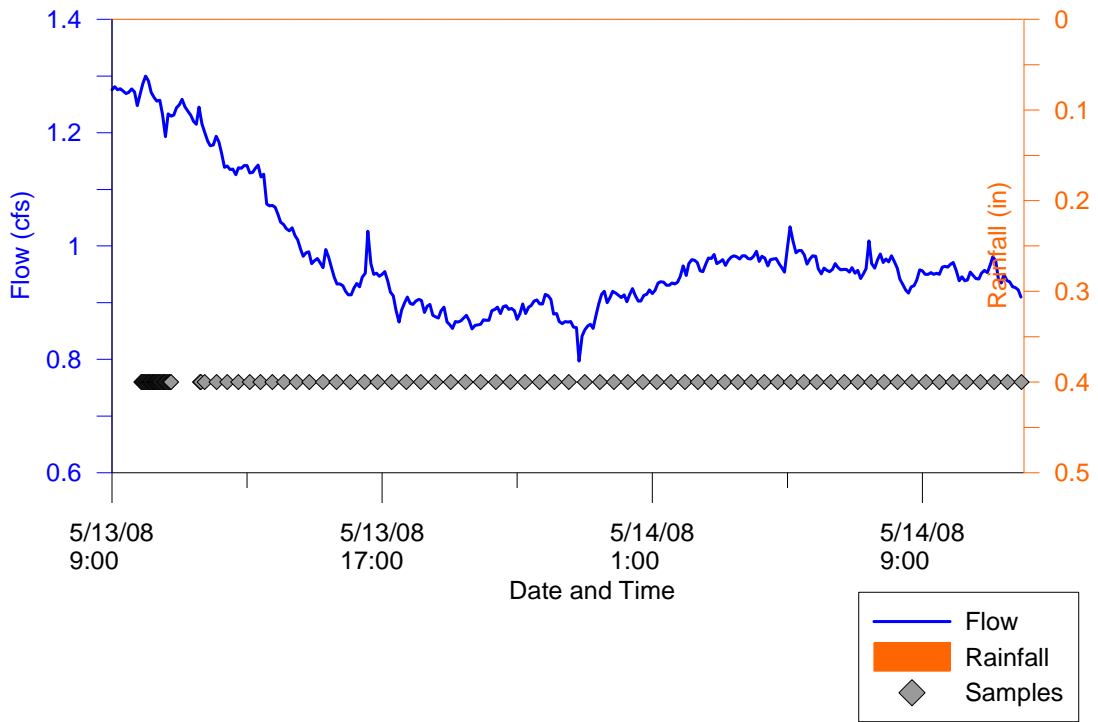
**19-September-2007**  
(First Ambient Event)  
**Hydrograph and Hyetograph**  
**EC MLS**



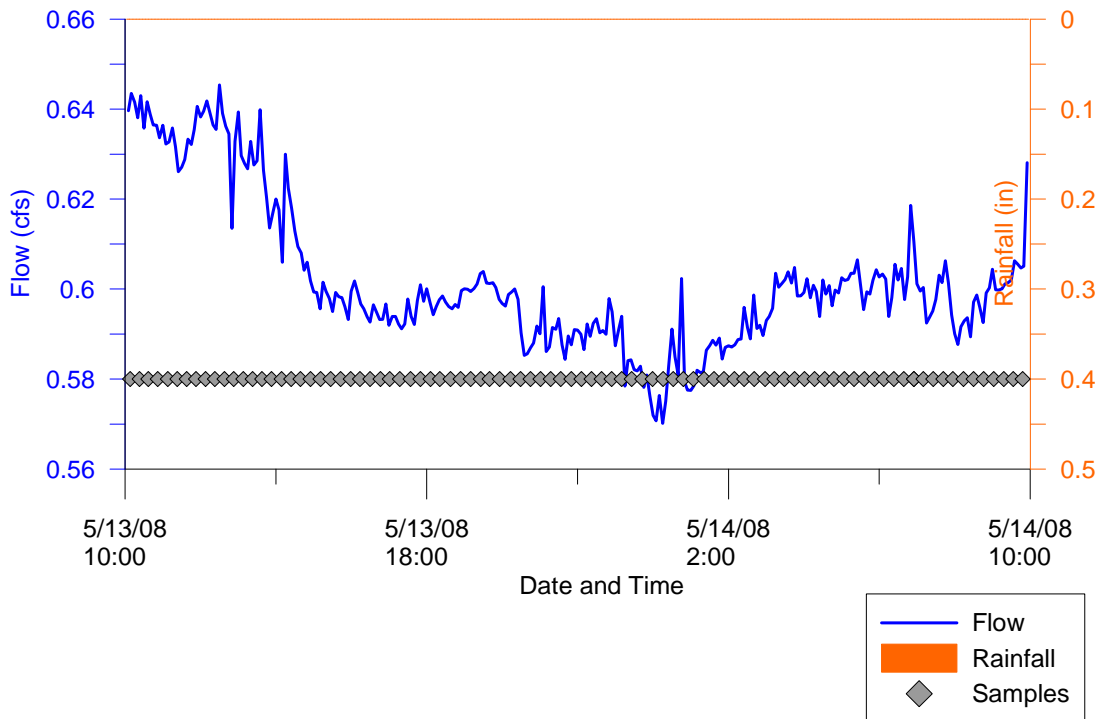
**19-September-2007**  
(First Ambient Event)  
**Hydrograph and Hyetograph**  
**EC TWAS 1**



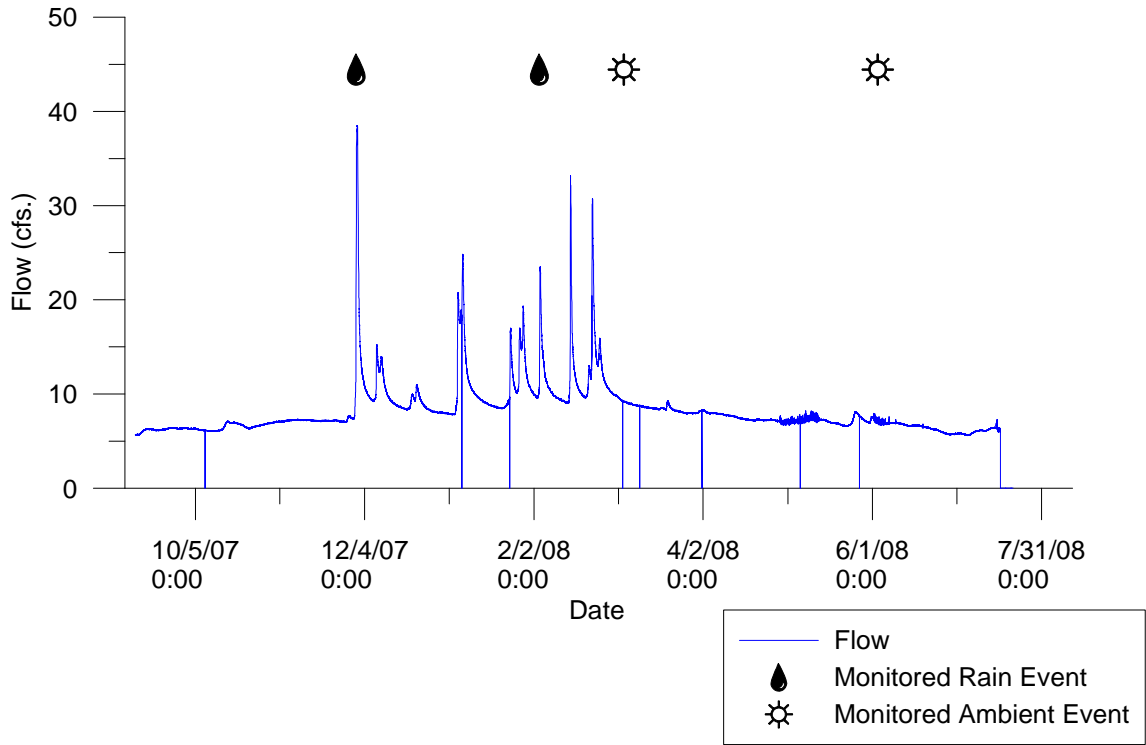
**13-May-2008**  
(Second Ambient Event)  
**Hydrograph and Hyetograph**  
**EC MLS**



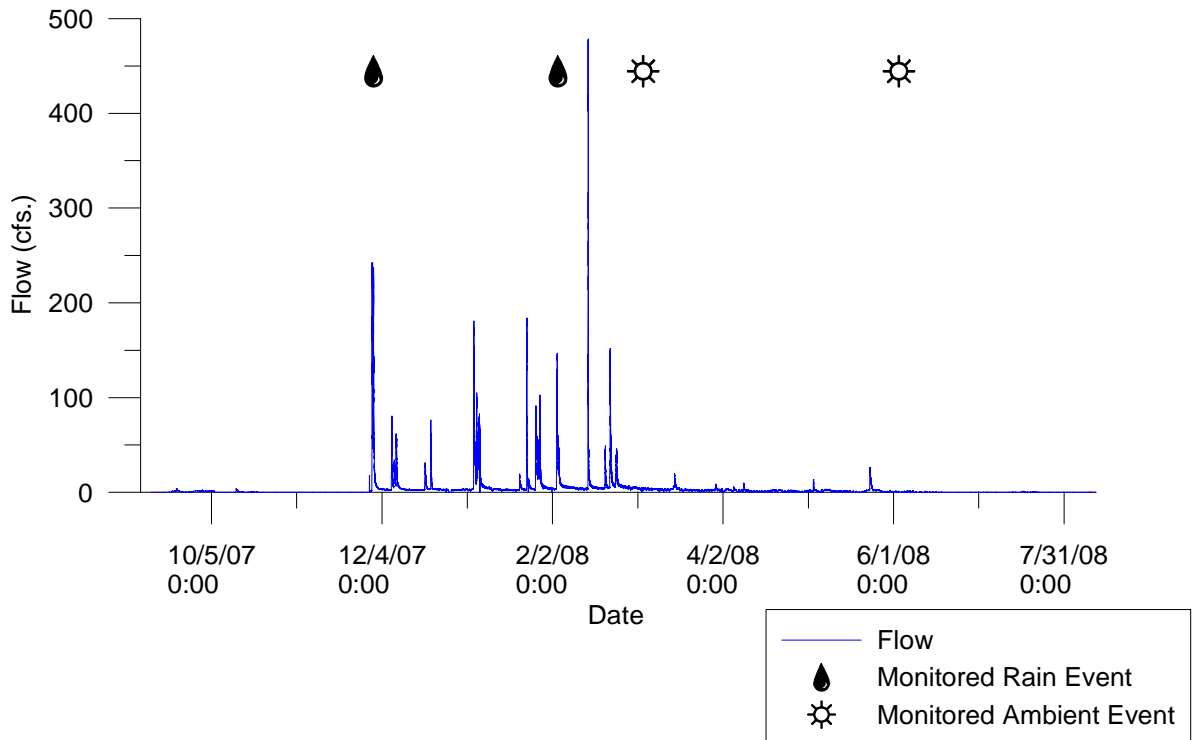
**13-May-2008**  
(Second Ambient Event)  
**Hydrograph and Hyetograph**  
**EC TWAS 1**



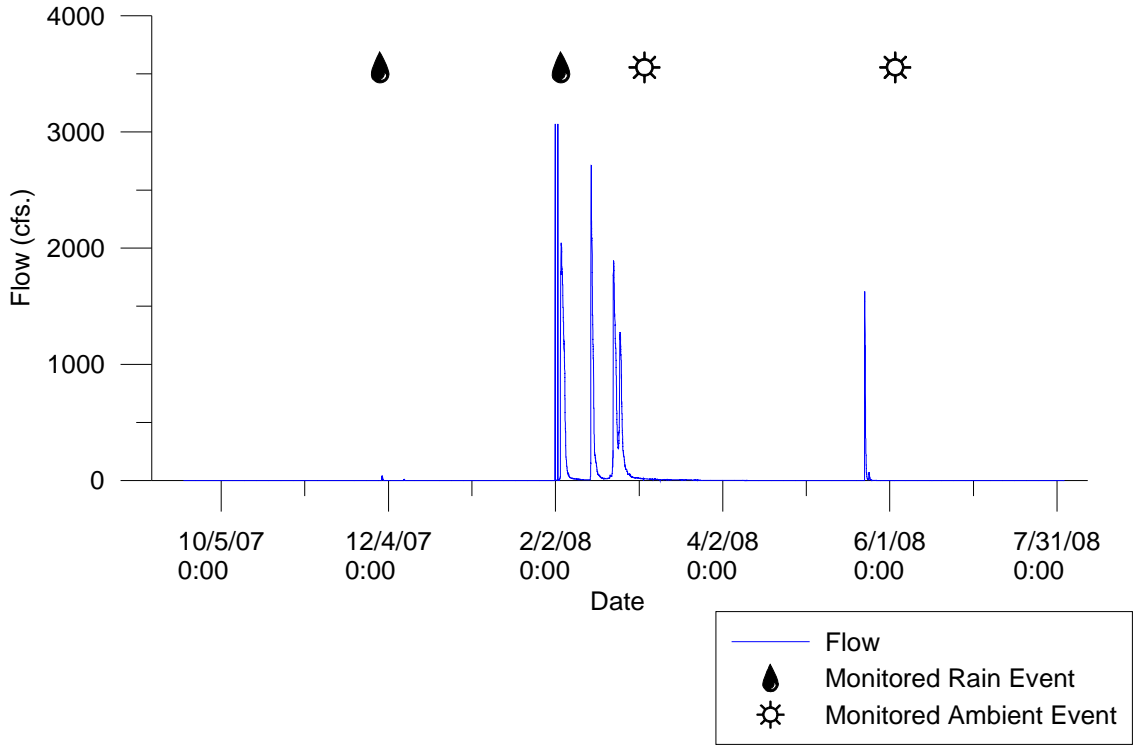
Annual Hydrograph  
SDC MLS  
09/13/2007 - 08/11/2008



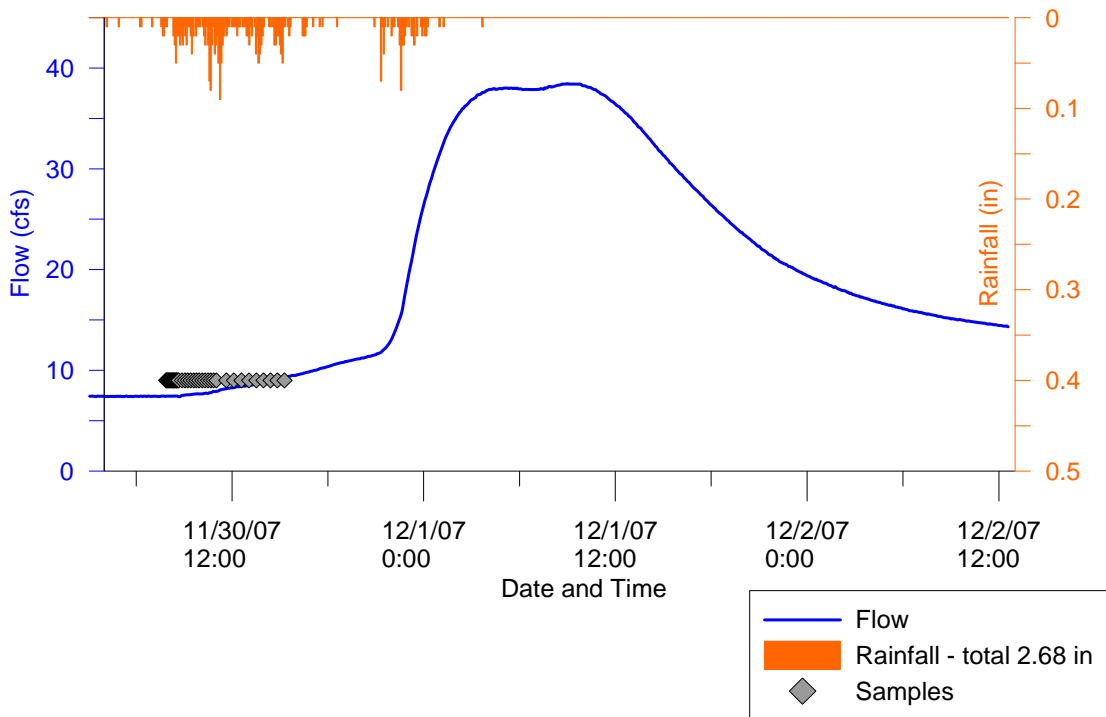
Annual Hydrograph  
SDC TWAS 1  
09/13/2007 - 08/11/2008



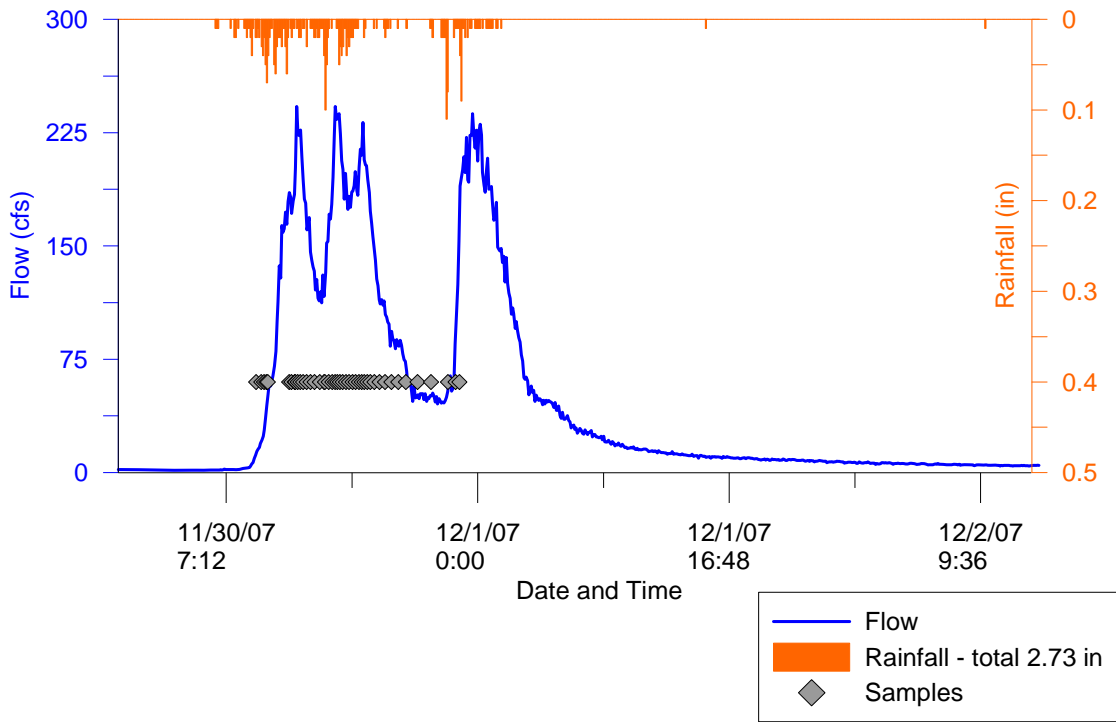
Annual Hydrograph  
SDC TWAS 2  
09/13/2007 - 08/11/2008



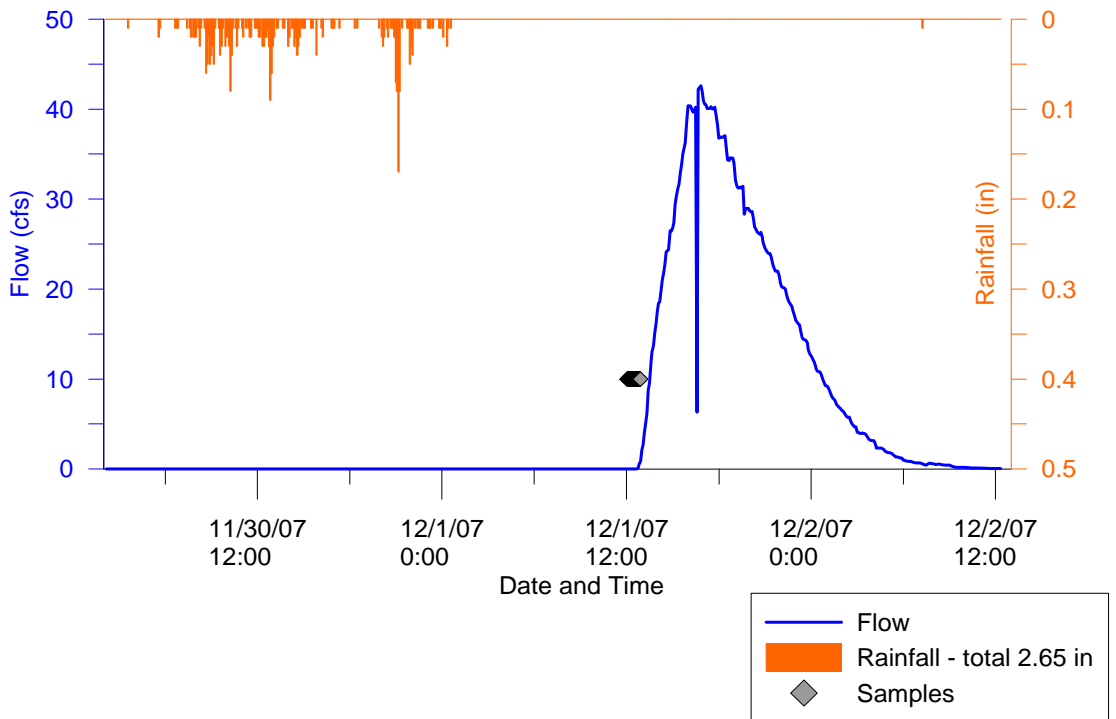
30-November-2007  
(First Wet Event)  
Hydrograph and Hyetograph  
SDC MLS



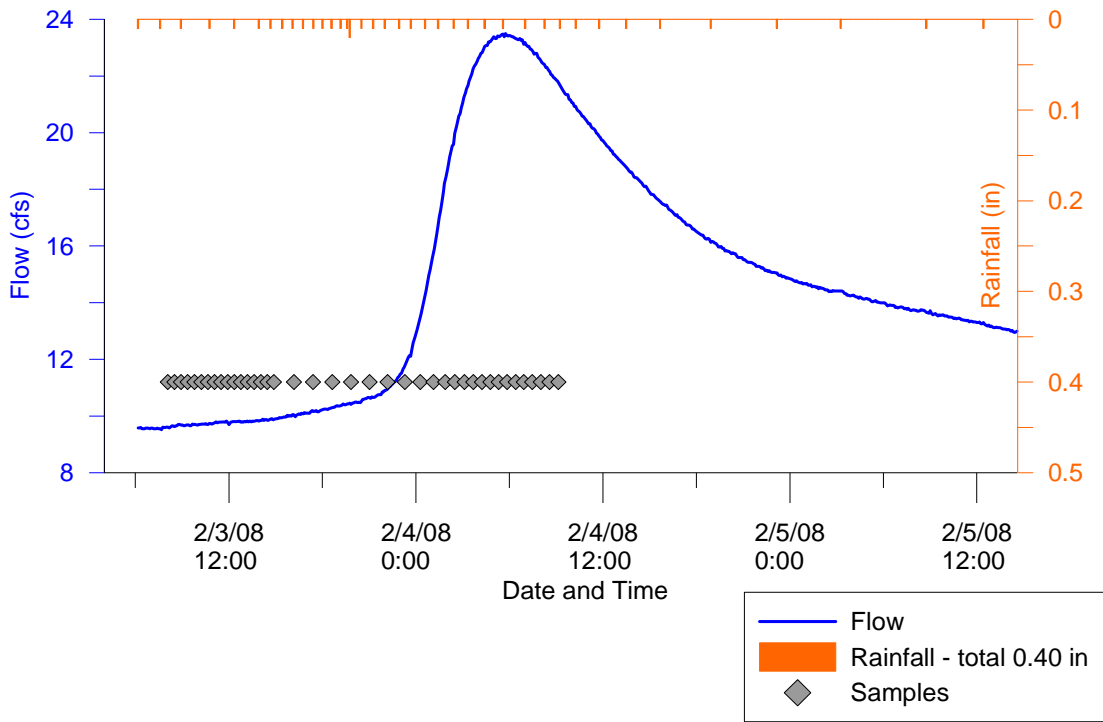
**30-November-2007**  
 (First Wet Event)  
**Hydrograph and Hyetograph**  
**SDC TWAS 1**



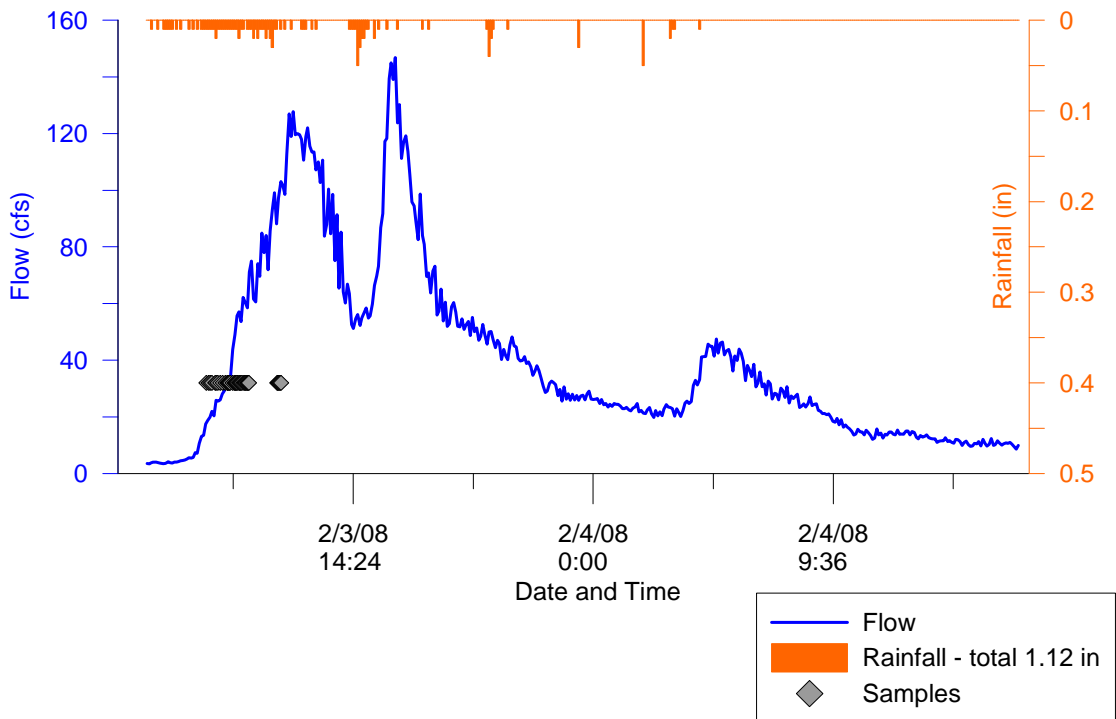
**30-November-2007**  
 (First Wet Event)  
**Hydrograph and Hyetograph**  
**SDC TWAS 2**



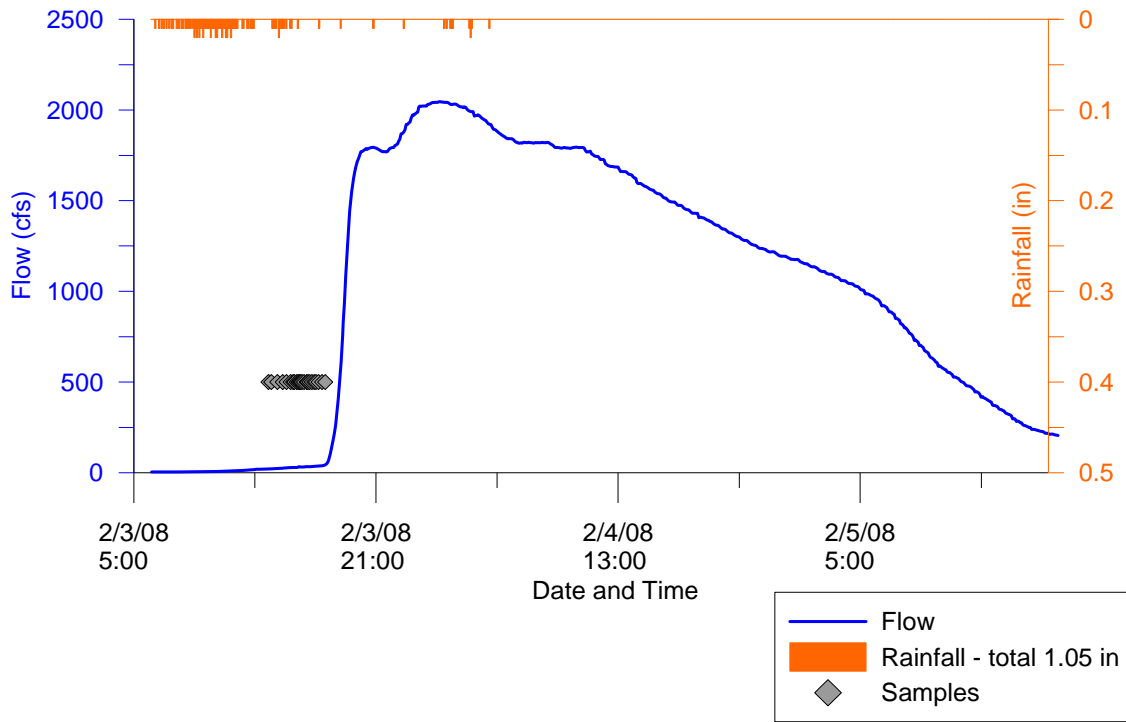
**3-February-2008**  
 (Second Wet Event)  
**Hydrograph and Hyetograph**  
**SDC MLS**



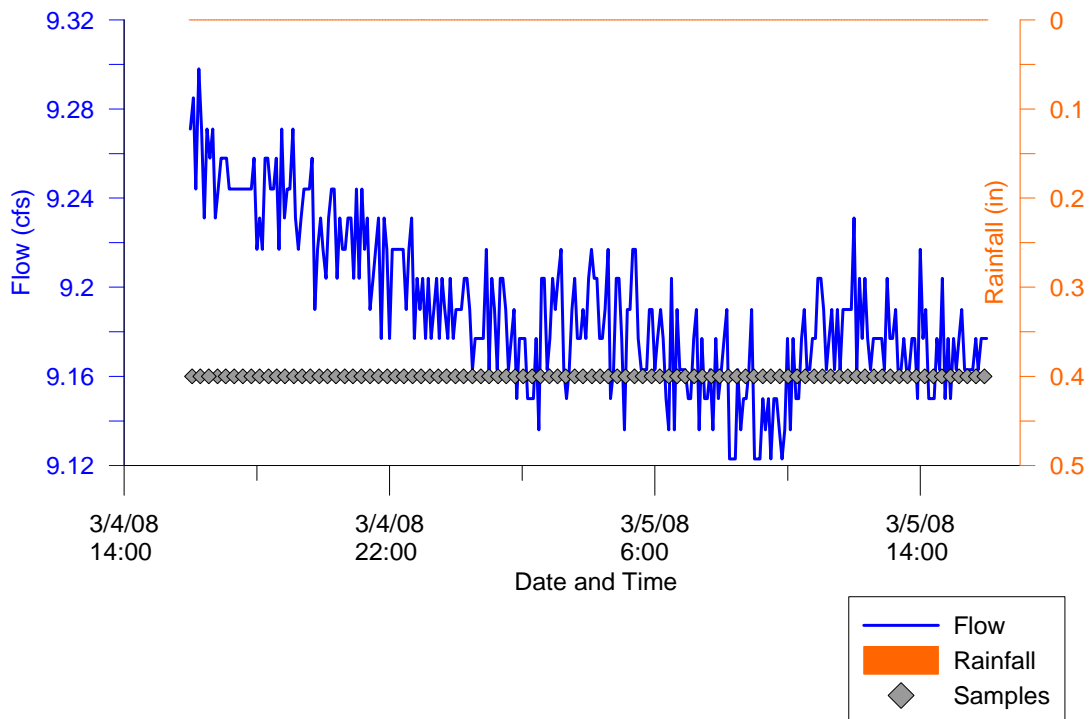
**3-February-2008**  
 (Second Wet Event)  
**Hydrograph and Hyetograph**  
**SDC TWAS 1**



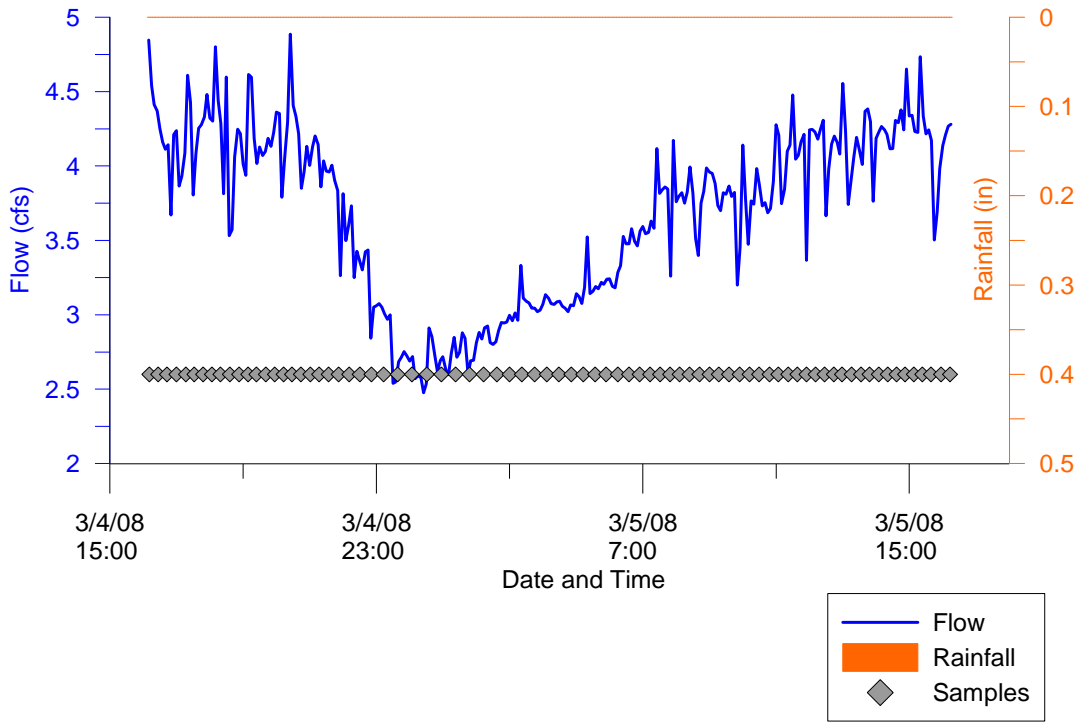
**3-February-2008**  
 (Second Wet Event)  
**Hydrograph and Hyetograph**  
**SDC TWAS 2**



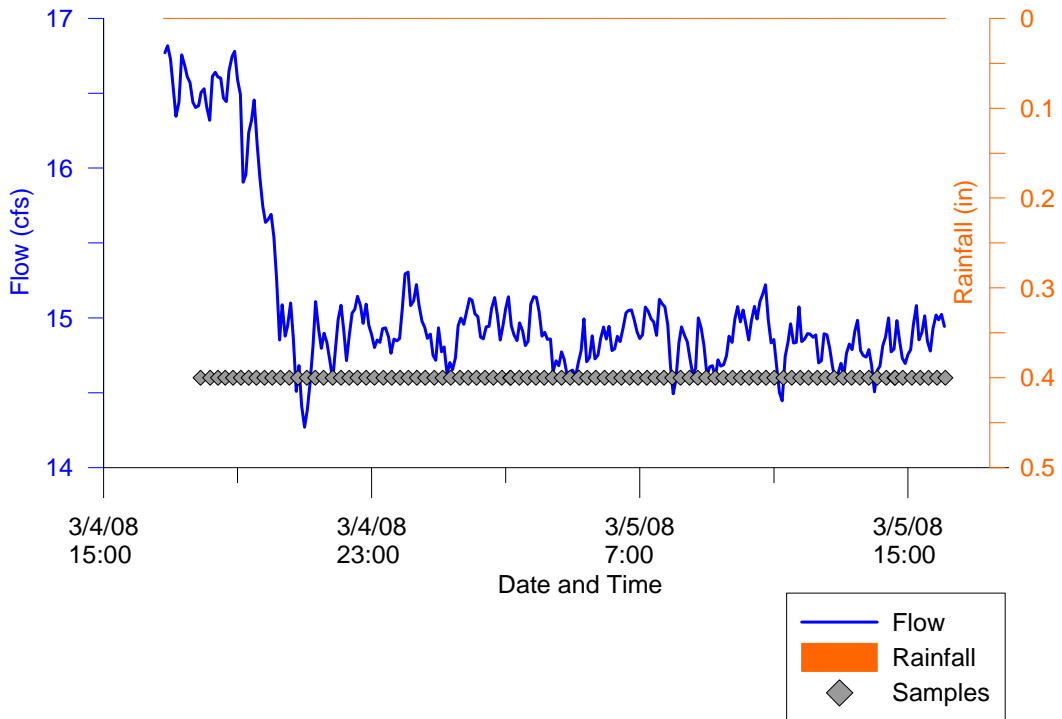
**5-March-2008**  
 (First Ambient Event)  
**Hydrograph and Hyetograph**  
**SDC MLS**



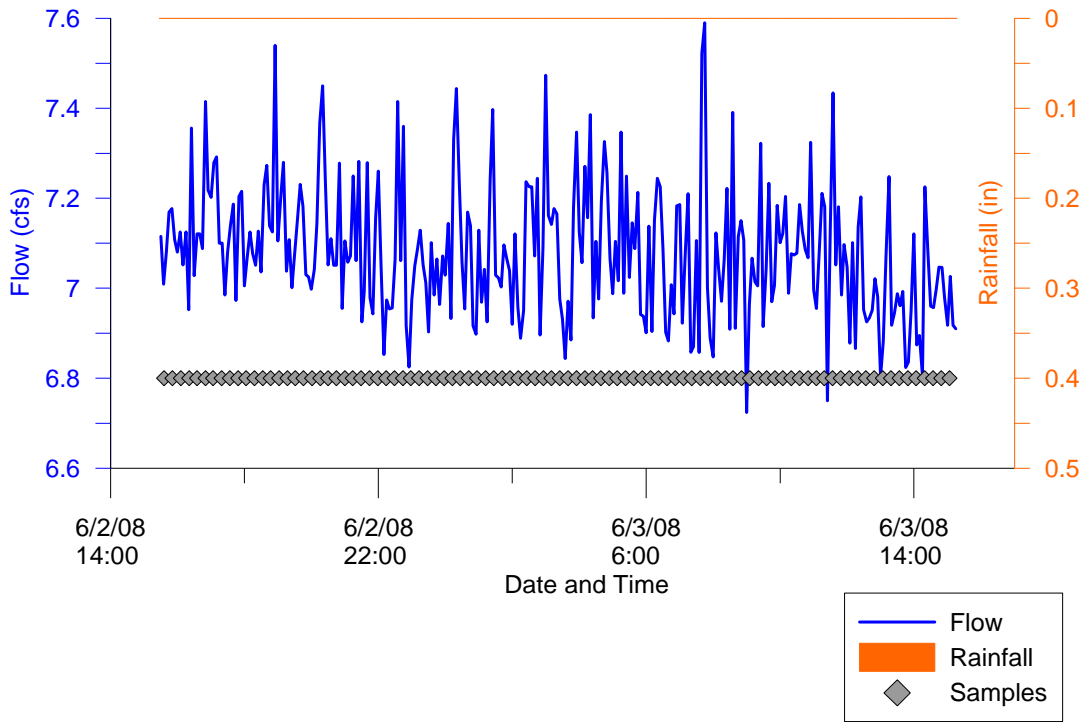
**5-March-2007**  
(First Ambient Event)  
**Hydrograph and Hyetograph**  
**SDC TWAS 1**



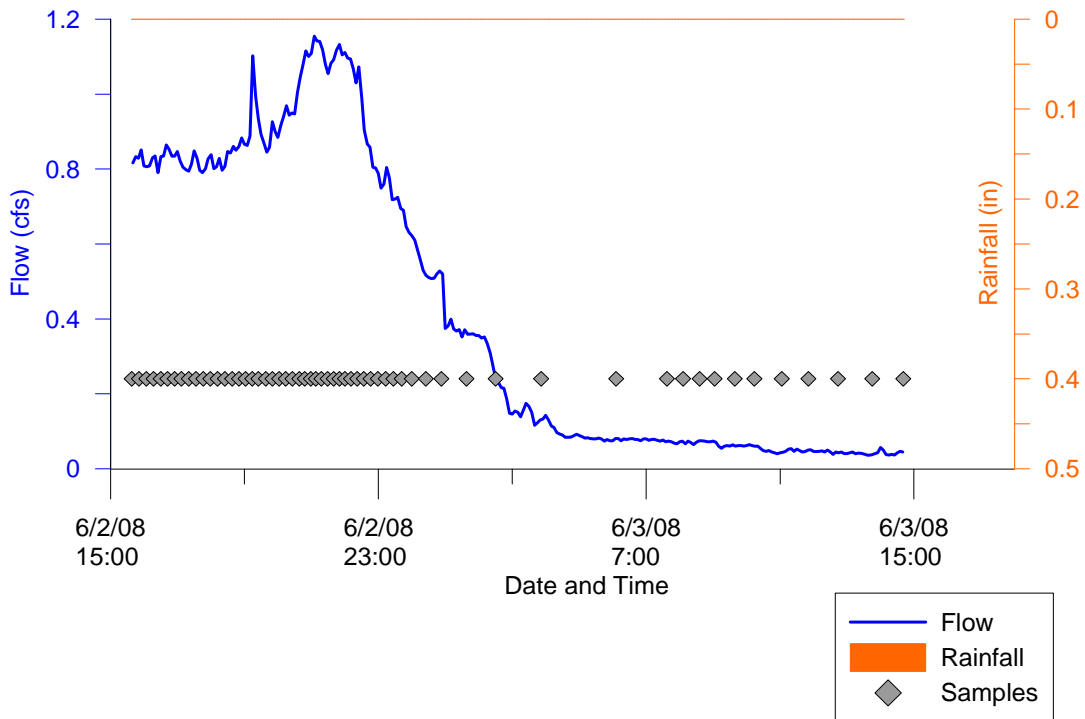
**5-March-2008**  
(First Ambient Event)  
**Hydrograph and Hyetograph**  
**SDC TWAS 2**



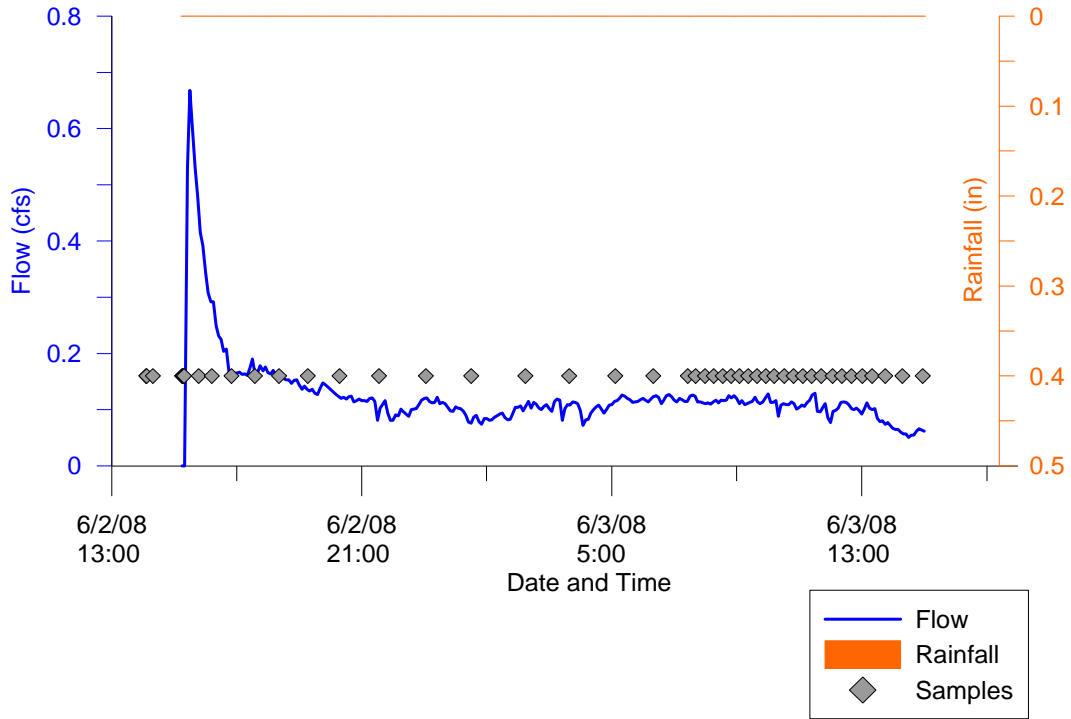
**3-June-2008**  
 (Second Ambient Event)  
**Hydrograph and Hyetograph**  
**SDC MLS**



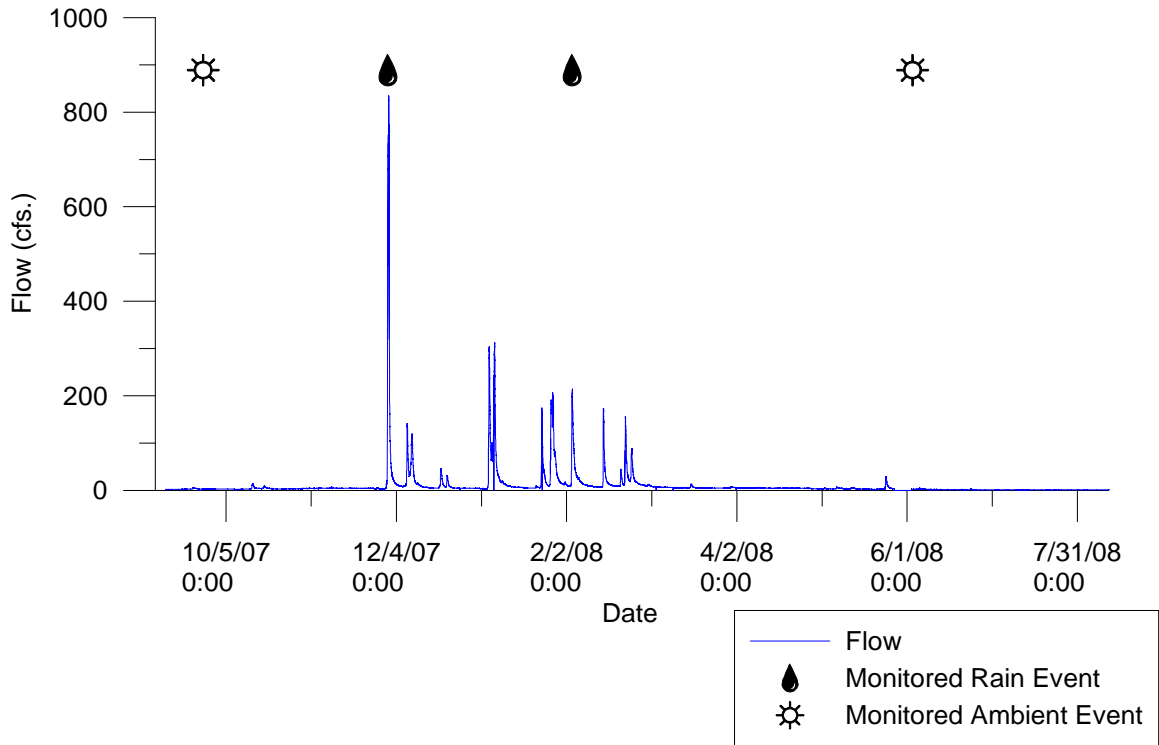
**5-March-2007**  
 (Second Ambient Event)  
**Hydrograph and Hyetograph**  
**SDC TWAS 1**



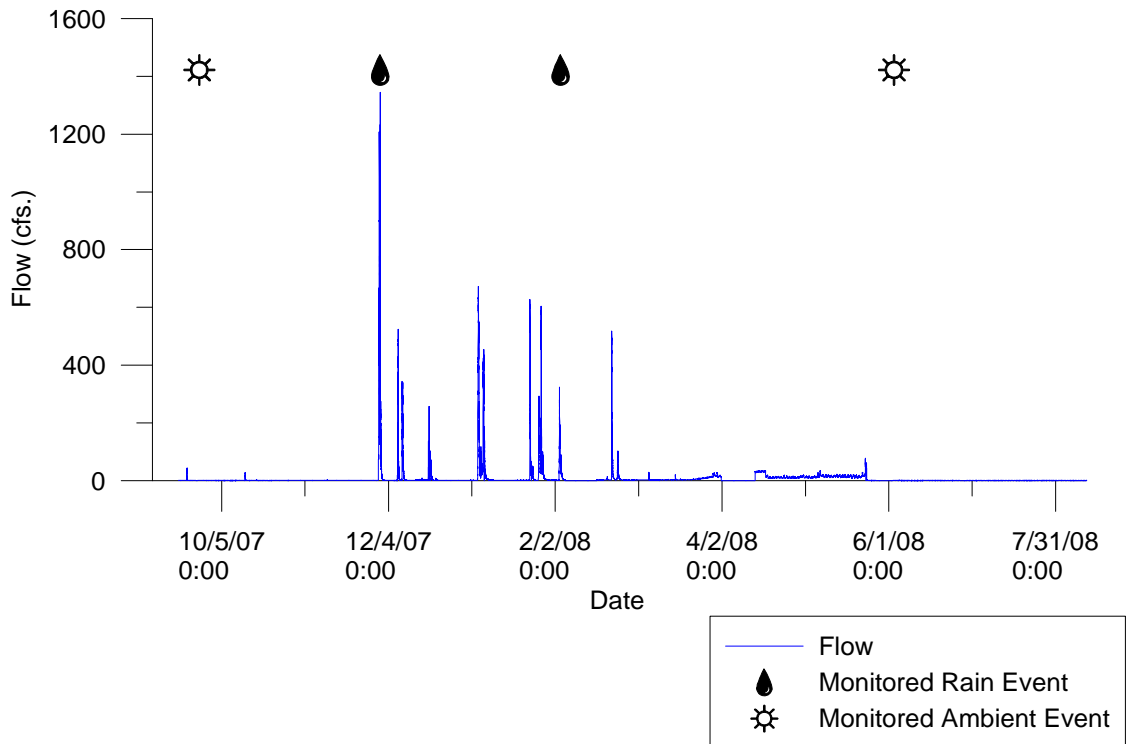
**3-June-2008**  
(Second Ambient Event)  
**Hydrograph and Hyetograph**  
**SDC TWAS 2**



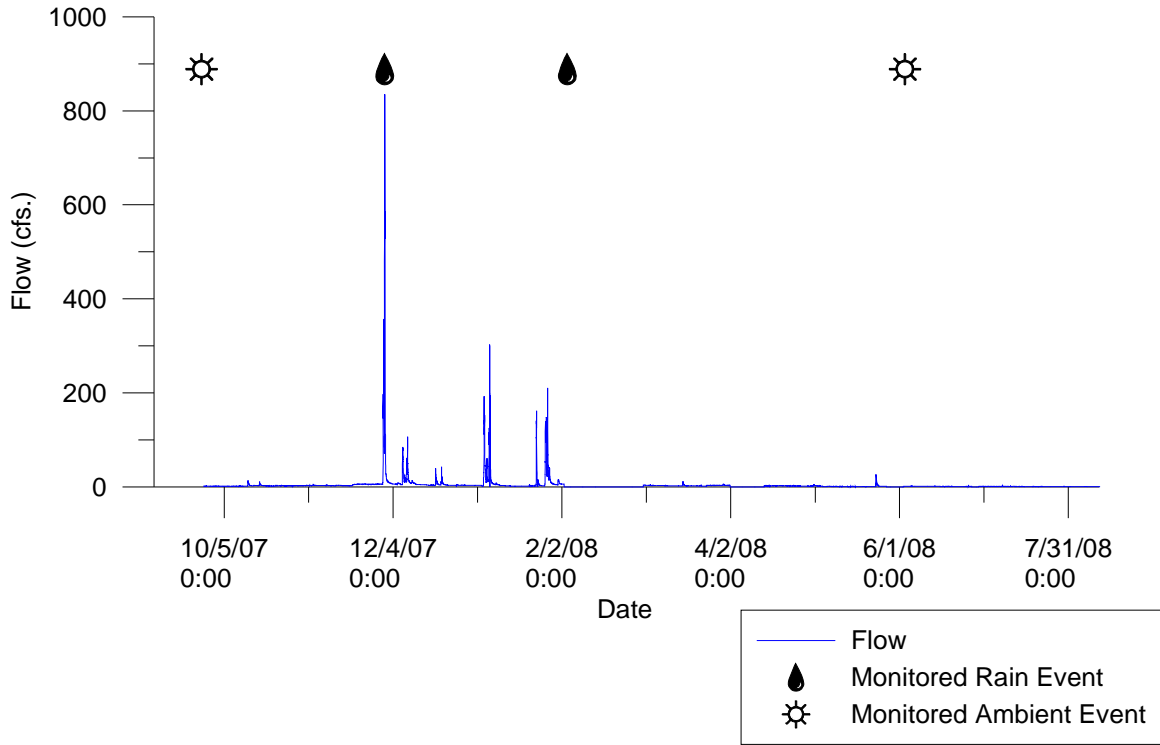
Annual Hydrograph  
LPC MLS  
09/13/2007 - 08/11/2008



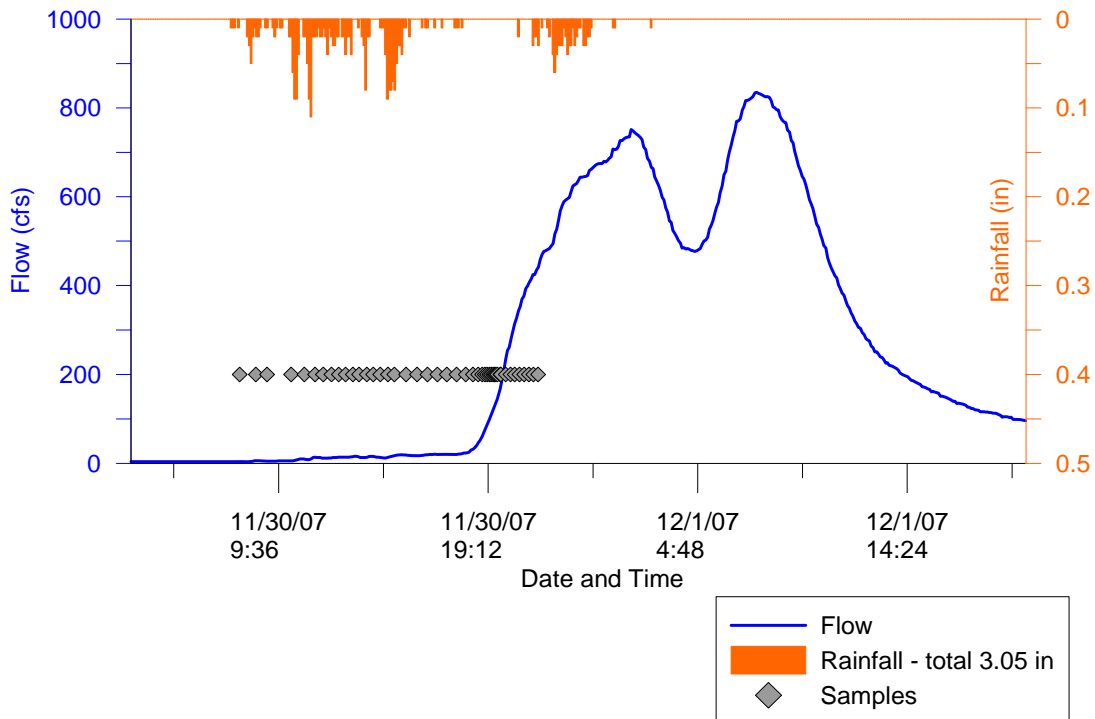
Annual Hydrograph  
LPC TWAS 1  
09/13/2007 - 08/11/2008



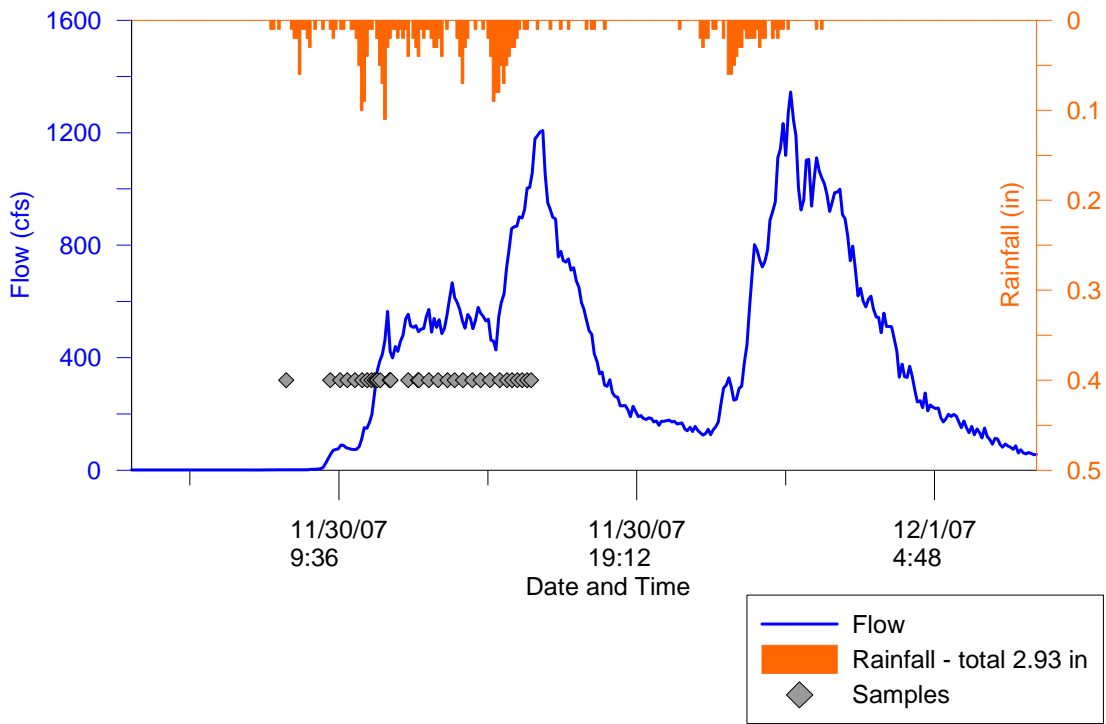
Annual Hydrograph  
LPC TWAS 2  
09/13/2007 - 08/11/2008



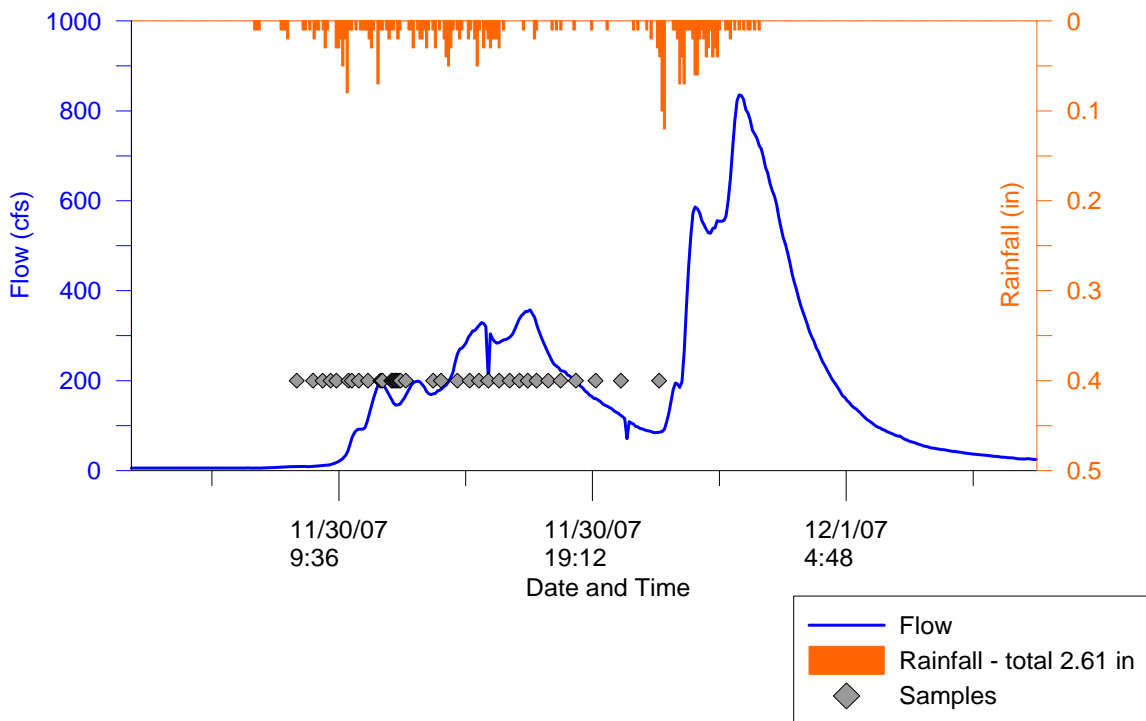
30-November-2007  
(First Wet Event)  
Hydrograph and Hyetograph  
LPC MLS



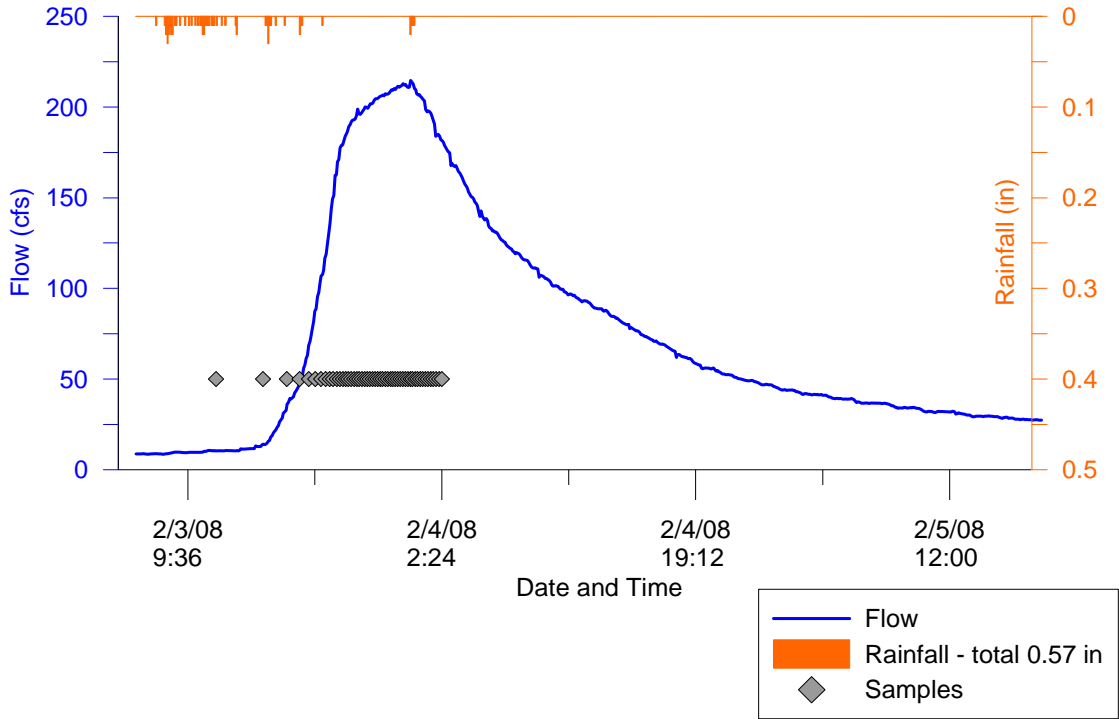
**30-November-2007**  
(First Wet Event)  
**Hydrograph and Hyetograph**  
**LPC TWAS 1**



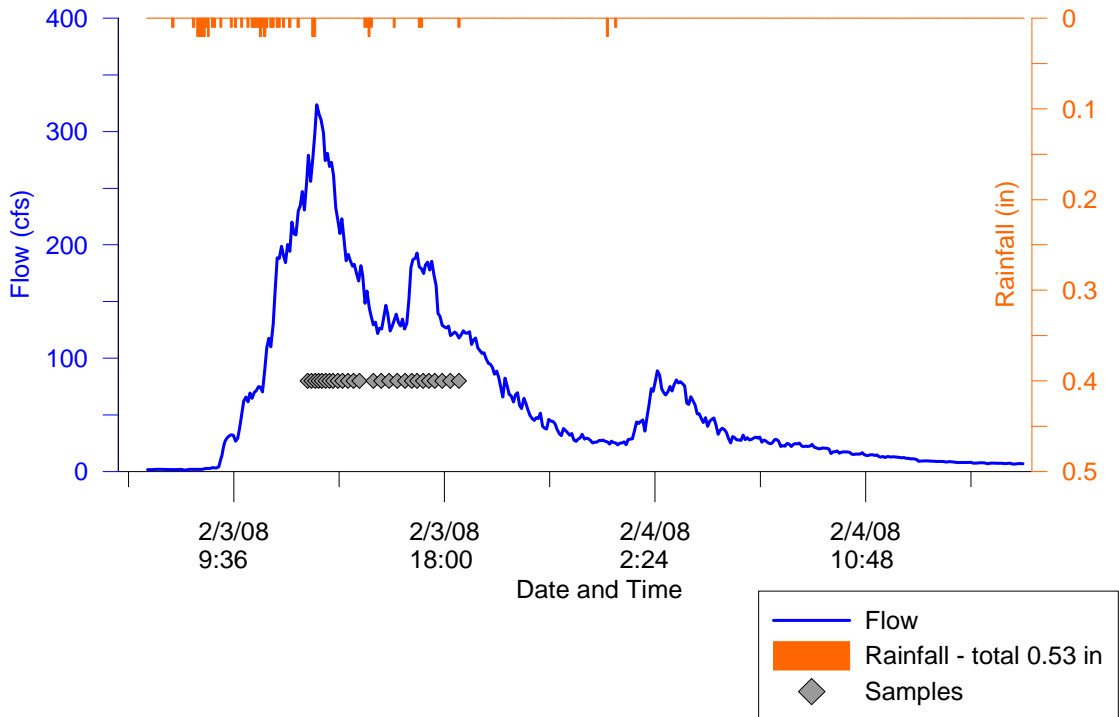
**30-November-2007**  
(First Wet Event)  
**Hydrograph and Hyetograph**  
**LPC TWAS 2**



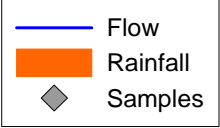
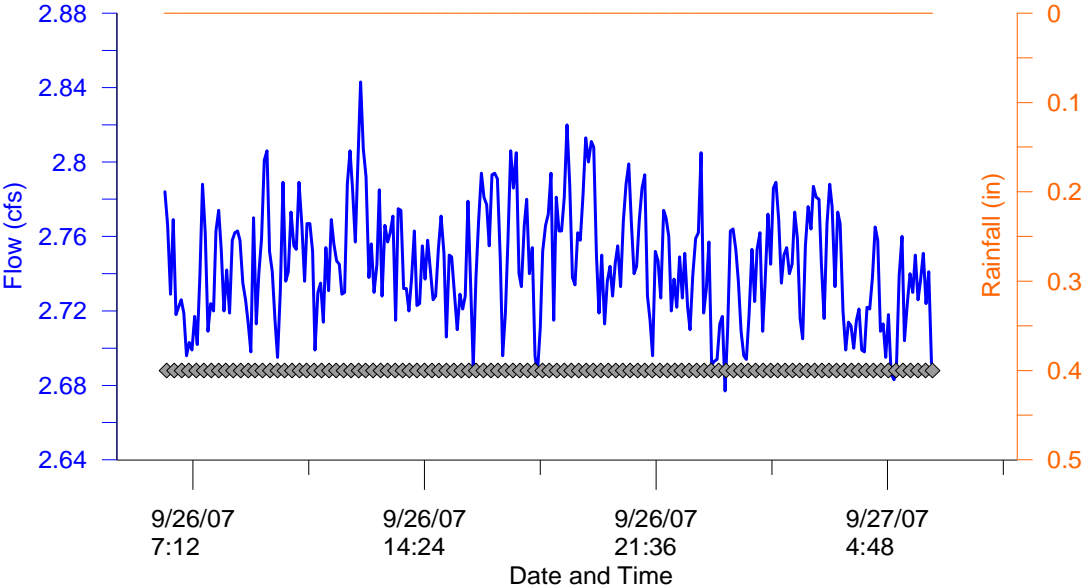
**3-February-2008**  
 (Second Wet Event)  
**Hydrograph and Hyetograph**  
**LPC MLS**



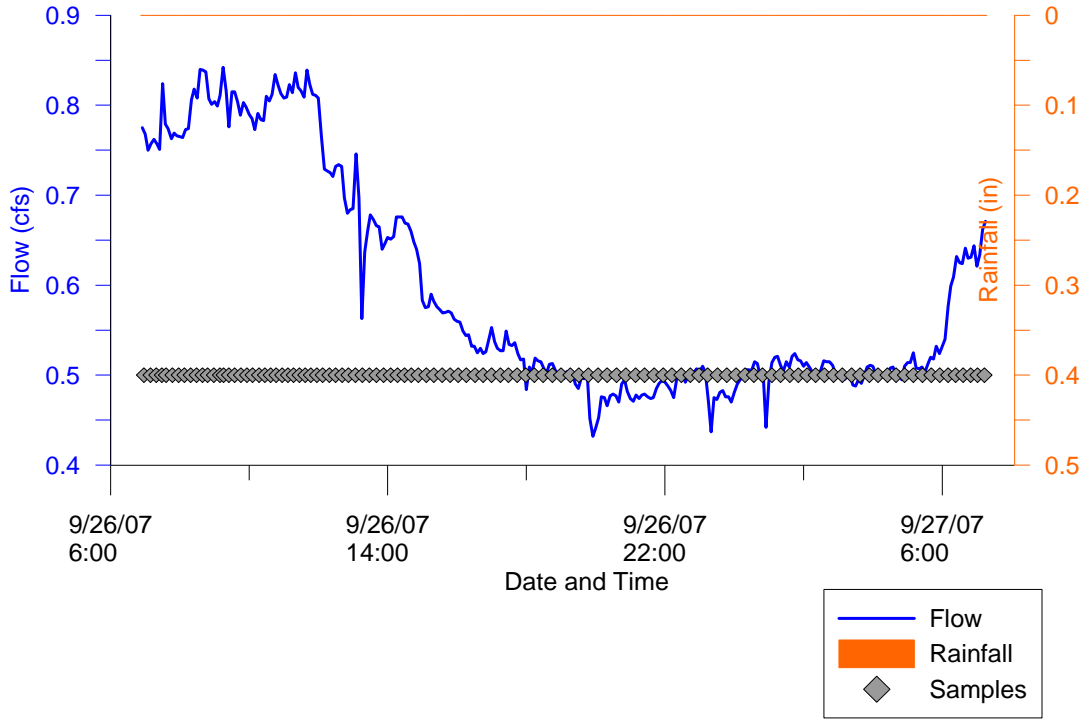
**3-February-2008**  
 (Second Wet Event)  
**Hydrograph and Hyetograph**  
**LPC TWAS 1**



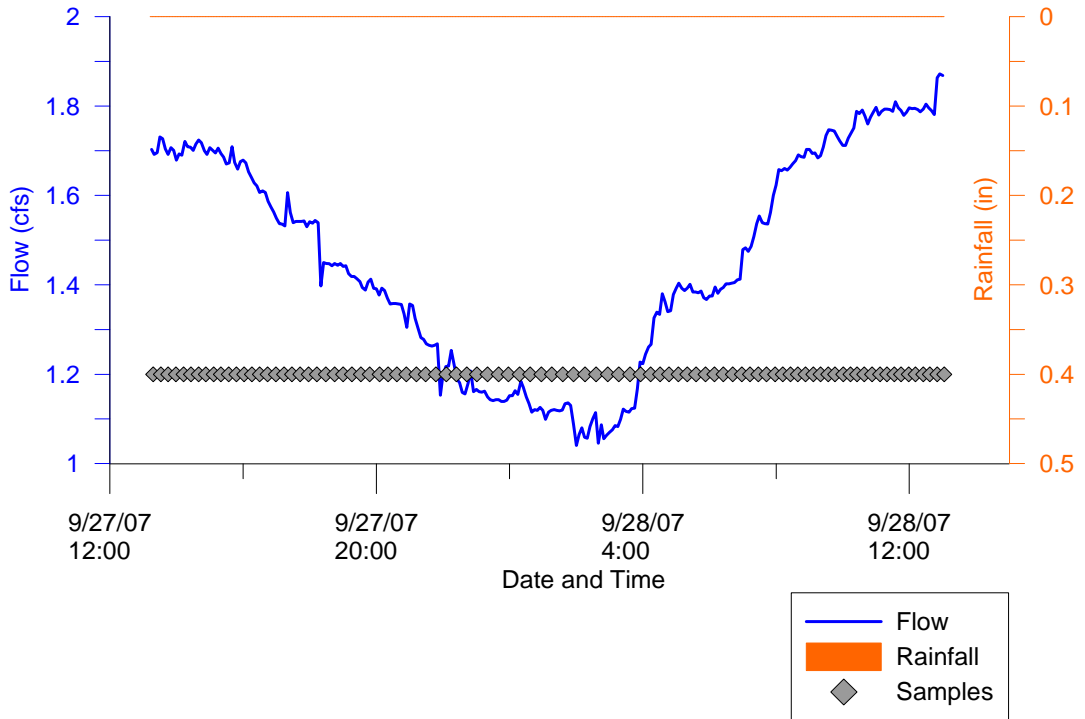
**26-September-2007**  
(First Ambient Event)  
**Hydrograph and Hyetograph**  
**LPC MLS**



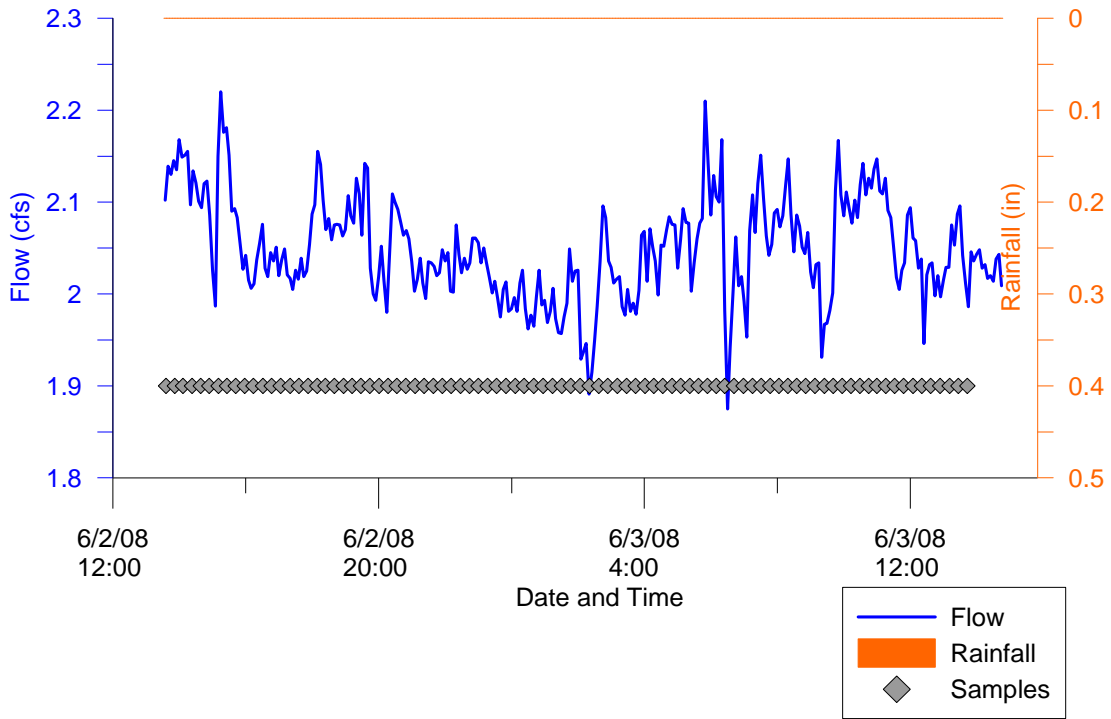
**26-September-2007**  
 (First Ambient Event)  
**Hydrograph and Hyetograph**  
**LPC TWAS 1**



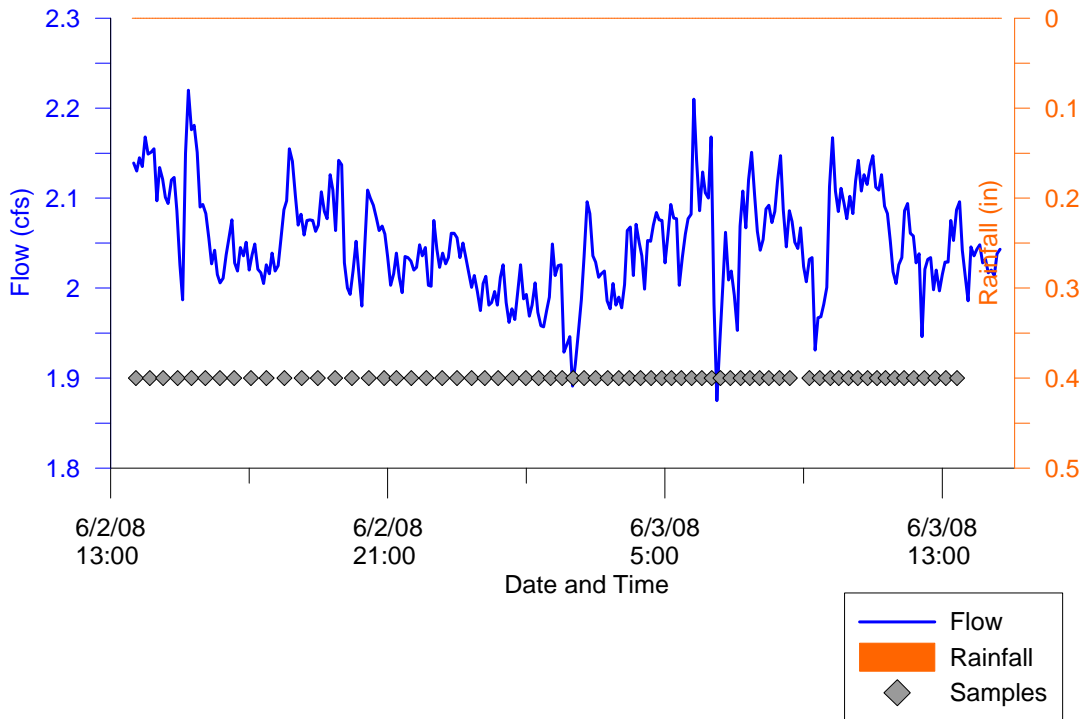
**27-September-2007**  
 (First Ambient Event)  
**Hydrograph and Hyetograph**  
**LPC TWAS 2**



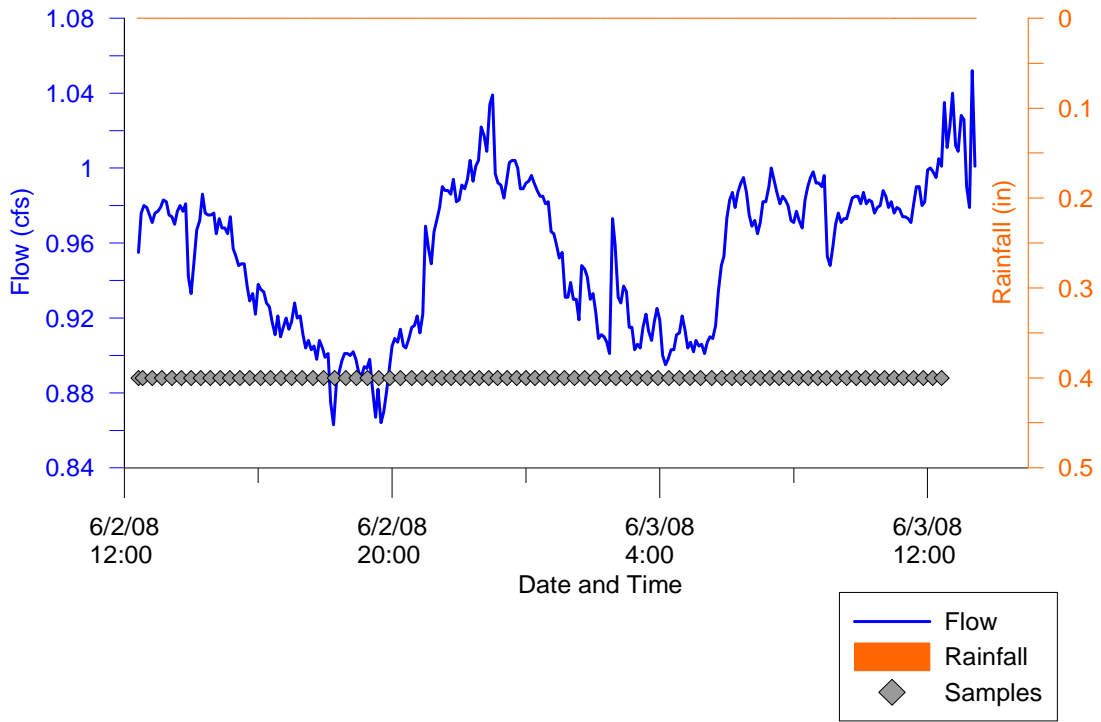
**3-June-2008**  
(Second Ambient Event)  
**Hydrograph and Hyetograph**  
**LPC MLS**



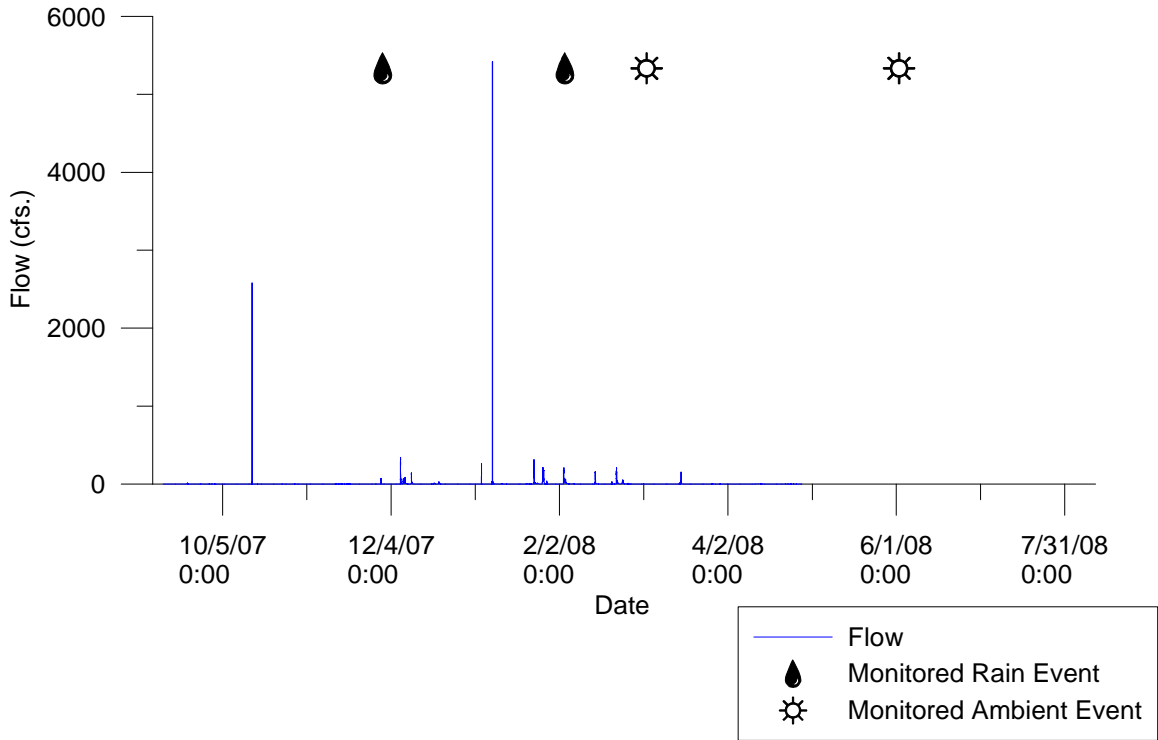
**3-June-2008**  
(Second Ambient Event)  
**Hydrograph and Hyetograph**  
**LPC TWAS 1**



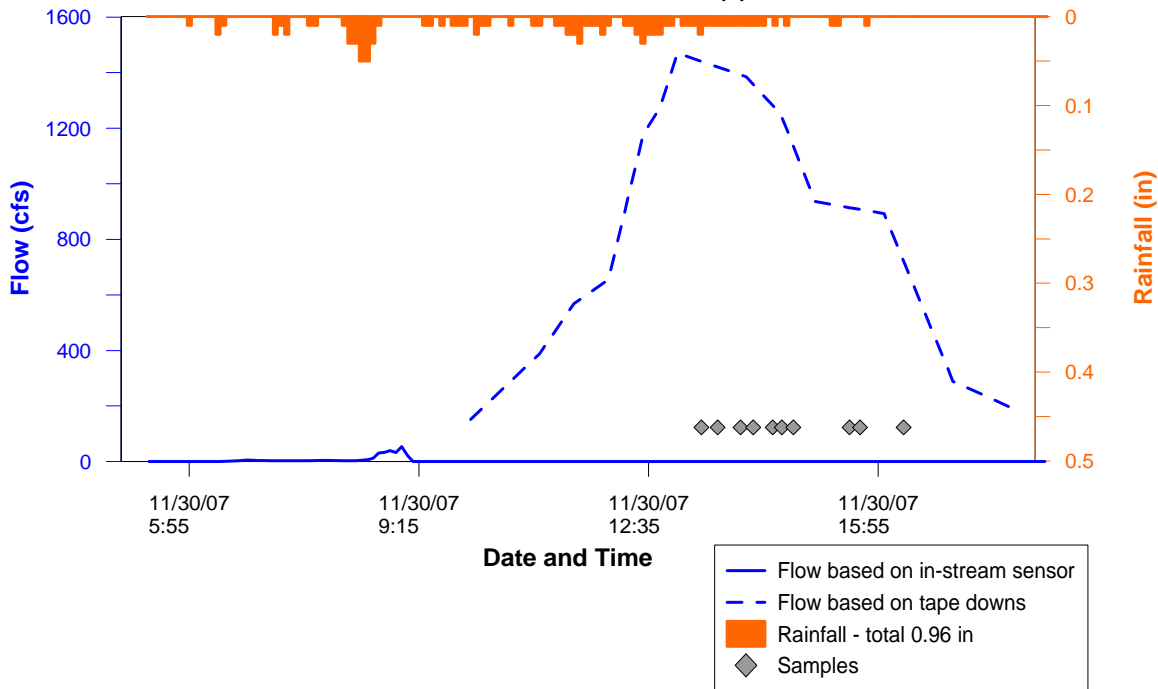
**3-June-2008**  
(Second Ambient Event)  
**Hydrograph and Hyetograph**  
**LPC TWAS 2**



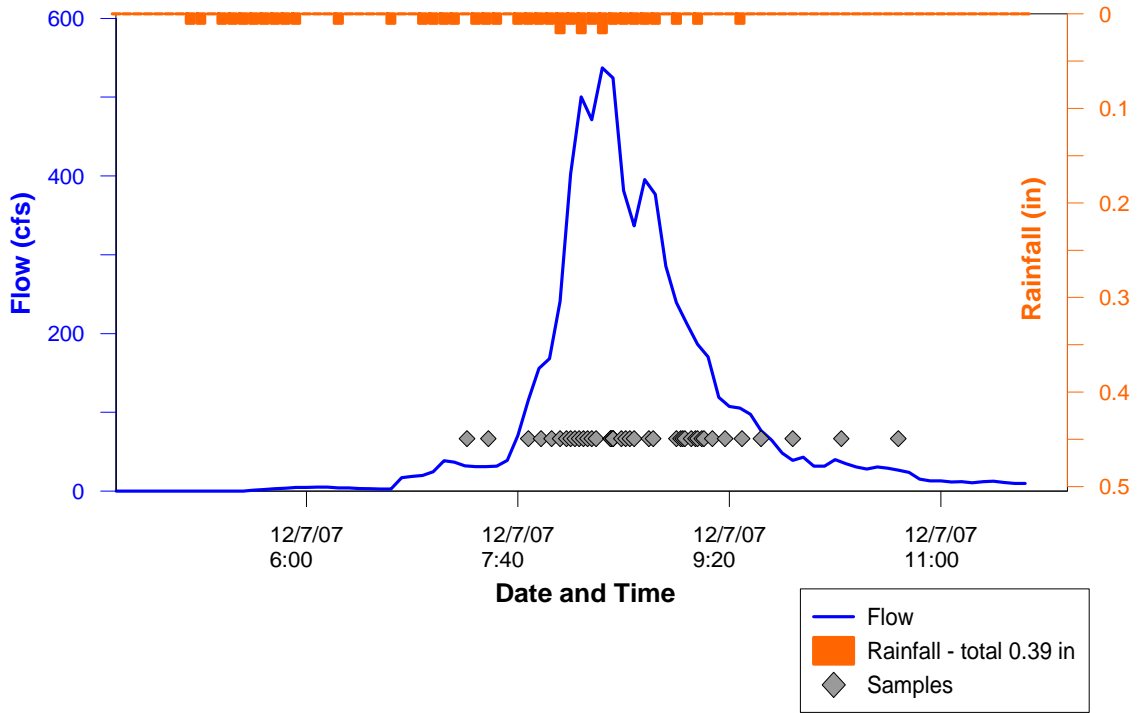
Annual Hydrograph  
SD8(1) - CC MLS  
09/13/2007 - 07/31/2008



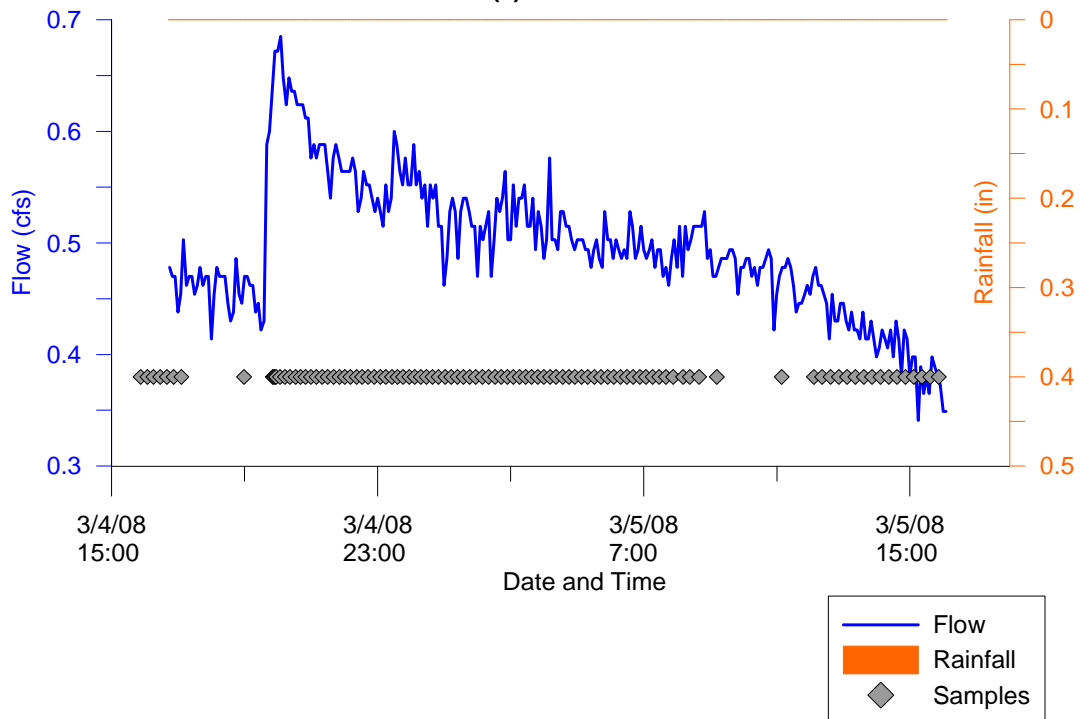
30-November-2007  
(First Wet Event)  
Hydrograph and Hyetograph  
Chollas Creek MLS - SD8 (1)



**7-December-2007**  
 (Second Wet Event)  
**Hydrograph and Hyetograph**  
**Chollas Creek MLS - SD8 (1)**



**5-March-2008**  
 (First Ambient Event)  
**Hydrograph and Hyetograph**  
**SD8(1) - CC MLS**



**3-June-2008**  
(Second Ambient Event)  
**Hydrograph and Hyetograph**  
**SD8(1) - CC MLS**

