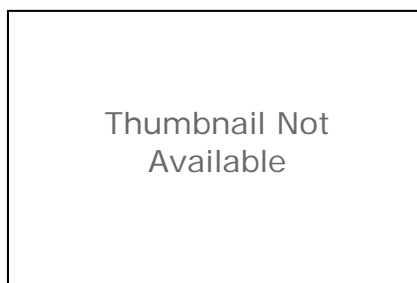


MLS_TWAS_Drainage_Areas_SMR

Shapefile



Tags

drainage areas, receiving water, mass loading station, MLS, TWAS, water quality

Summary

A map layer showing the drainage areas below dams of the long term monitoring station, which is the mass loading station (MLS) for the receiving water in the San Diego County portion of the Santa Margarita River Watershed Management Area (WMA).

Description

Transitional monitoring was conducted at the MLS in accordance with the transitional monitoring requirements of the 2013 Permit (Permit). In addition, long-term monitoring at the MLS was conducted in accordance with Provision D.1.b–d of the Permit. See metadata of receiving water monitoring stations for additional program details. These polygons represent the approximate drainage area below reservoir dams to the monitoring stations as shown on the receiving water monitoring station maps. Full drainage areas including area above major dams are provided in the bioassessment survey drainage area GIS files.

Credits

County of San Diego.
Weston Solutions, Inc.

Use limitations

There are no access and use limitations for this item.

Extent

West	-117.317594	East	-116.926484
North	33.710467	South	33.389964

Scale Range

Maximum (zoomed in)	1:5,000
Minimum (zoomed out)	1:150,000,000

You are currently using the Item Description metadata style. Change your metadata style in the Options dialog box to see additional metadata content.