

**ATTACHMENT A.4**  
**POTENTIAL COARSE SEDIMENT YIELD AREAS**

### A.4.1 Geology Grouping

Geologic grouping was based on the mapped geologic unit as determined by published geologic mapping information. The following describes the methodology utilized to determine bedrock or sedimentary characteristics, anticipated grain size, and suitability for infiltration. A complete list of the various geologic maps used in this evaluation is listed in Chapter 6.

Due to the various mapped scales of the published data and differing mapped unit names, the geologic units were initially compiled into similar categories where possible. For example, the Lindavista Formation is mapped as unit Ql on geologic maps at a scale of 1:24,000 but correlates to the same unit Qvop8 on geologic maps at a scale of 1:100,000. Following the compilation of geologic unit names, the units were differentiated between crystalline bedrock and sedimentary formations based on geologic characterization and material behavior. The Point Loma Formation for example, is a Cretaceous-age sandstone, but it was classified as a “coarse bedrock” unit due to its indurated and resistant nature.

For each site location, the predominant geologic units were then described as “coarse” or “fine” based on typical weathering characteristics of the bedrock units, or primary grain size of the sedimentary units. For example, granodiorite or tonalite crystalline rock typically weathers to a coarse material such as a silty sand and therefore was classified as “coarse,” compared to a gabbro which generally weathers to a sandy clay and was characterized as “fine.” Sedimentary formations can be more variable, such as the Mission Valley Formation. In this case, the Mission Valley Formation was characterized as “coarse” since the unit is predominantly comprised of sandstone even if it does contain localities of siltstone and claystone within the unit.

To further characterize the sedimentary formations, these units were evaluated for suitability of infiltration. Since no field investigations were performed for this evaluation to determine permeability, the differentiation between impermeable and permeable were based on the age of the geologic unit with the assumption that relatively younger sedimentary units of Pleistocene-age or younger (<1.6 mya) would be more susceptible to surface water infiltration. Geology grouping of different map units is presented in Table A.4.1

**Table A.4.1 Geologic grouping for different map units**

Map Unit	Map Name	Anticipated Grain size of Weathered Material	Bedrock or Sedimentary	Impermeable/ Permeable	Geology Grouping
gr-m	Jennings; CA	Coarse	Bedrock	Impermeable	CB
grMz	Jennings; CA	Coarse	Bedrock	Impermeable	CB
Jcr	El Cajon 30' x 60'	Coarse	Bedrock	Impermeable	CB
Jhc	El Cajon 30' x 60'	Coarse	Bedrock	Impermeable	CB
Jsp	El Cajon 30' x 60'	Coarse	Bedrock	Impermeable	CB
Ka	El Cajon 30' x 60'	Coarse	Bedrock	Impermeable	CB
Kbm	Oceanside 30' x 60'	Coarse	Bedrock	Impermeable	CB
Kbp	Oceanside 30' x 60'	Coarse	Bedrock	Impermeable	CB
Kcc	Oceanside 30' x 60'	Coarse	Bedrock	Impermeable	CB
Kcg	Oceanside 30' x 60'	Coarse	Bedrock	Impermeable	CB
Kcm	El Cajon 30' x 60'	Coarse	Bedrock	Impermeable	CB
Kcp	El Cajon 30' x 60'	Coarse	Bedrock	Impermeable	CB
Kd	San Diego & Oceanside 30' x 60'	Coarse	Bedrock	Impermeable	CB
Kdl	Oceanside 30' x 60'	Coarse	Bedrock	Impermeable	CB
Kg	Oceanside 30' x 60'	Coarse	Bedrock	Impermeable	CB
Kgbf	Oceanside 30' x 60'	Coarse	Bedrock	Impermeable	CB
Kgd	San Diego & Oceanside 30' x 60'	Coarse	Bedrock	Impermeable	CB
Kgdf	Oceanside 30' x 60'	Coarse	Bedrock	Impermeable	CB
Kgh	San Diego 30' x 60'	Coarse	Bedrock	Impermeable	CB
Kgm	El Cajon 30' x 60'	Coarse	Bedrock	Impermeable	CB
Kgm1	El Cajon 30' x 60'	Coarse	Bedrock	Impermeable	CB
Kgm2	El Cajon 30' x 60'	Coarse	Bedrock	Impermeable	CB
Kgm3	El Cajon 30' x 60'	Coarse	Bedrock	Impermeable	CB
Kgm4	El Cajon 30' x 60'	Coarse	Bedrock	Impermeable	CB
Kgp	Oceanside 30' x 60'	Coarse	Bedrock	Impermeable	CB
Kgr	El Cajon 30' x 60'	Coarse	Bedrock	Impermeable	CB
Kgu	San Diego 30' x 60'	Coarse	Bedrock	Impermeable	CB
Khg	Oceanside 30' x 60'	Coarse	Bedrock	Impermeable	CB
Ki	Oceanside 30' x 60'	Coarse	Bedrock	Impermeable	CB
Kis	Oceanside 30' x 60'	Coarse	Bedrock	Impermeable	CB
Kjd	Oceanside 30' x 60'	Coarse	Bedrock	Impermeable	CB
KJem	El Cajon 30' x 60'	Coarse	Bedrock	Impermeable	CB
KJld	El Cajon 30' x 60'	Coarse	Bedrock	Impermeable	CB
Kjv	El Cajon 30' x 60'	Coarse	Bedrock	Impermeable	CB

Carlsbad WMAA Attachments

Map Unit	Map Name	Anticipated Grain size of Weathered Material	Bedrock or Sedimentary	Impermeable/ Permeable	Geology Grouping
Klb	El Cajon 30' x 60'	Coarse	Bedrock	Impermeable	CB
Klh	Oceanside 30' x 60'	Coarse	Bedrock	Impermeable	CB
Klp	El Cajon 30' x 60'	Coarse	Bedrock	Impermeable	CB
Km	Oceanside 30' x 60'	Coarse	Bedrock	Impermeable	CB
Kmg	Oceanside 30' x 60'	Coarse	Bedrock	Impermeable	CB
Kmgp	El Cajon 30' x 60'	Coarse	Bedrock	Impermeable	CB
Kmm	Oceanside 30' x 60'	Coarse	Bedrock	Impermeable	CB
Kpa	Oceanside 30' x 60'	Coarse	Bedrock	Impermeable	CB
Kpv	El Cajon 30' x 60'	Coarse	Bedrock	Impermeable	CB
Kqbd	Oceanside 30' x 60'	Coarse	Bedrock	Impermeable	CB
Kr	Oceanside 30' x 60'	Coarse	Bedrock	Impermeable	CB
Krm	Oceanside 30' x 60'	Coarse	Bedrock	Impermeable	CB
Krr	Oceanside 30' x 60'	Coarse	Bedrock	Impermeable	CB
Kt	San Diego & Oceanside 30' x 60'	Coarse	Bedrock	Impermeable	CB
Ktr	Oceanside 30' x 60'	Coarse	Bedrock	Impermeable	CB
Kvc	Oceanside 30' x 60'	Coarse	Bedrock	Impermeable	CB
Kwm	Oceanside 30' x 60'	Coarse	Bedrock	Impermeable	CB
Kwp	Oceanside 30' x 60'	Coarse	Bedrock	Impermeable	CB
Kwsr	Oceanside 30' x 60'	Coarse	Bedrock	Impermeable	CB
m	Jennings; CA	Coarse	Bedrock	Impermeable	CB
Mzd	Oceanside 30' x 60'	Coarse	Bedrock	Impermeable	CB
Mzg	Oceanside 30' x 60'	Coarse	Bedrock	Impermeable	CB
Mzq	Oceanside 30' x 60'	Coarse	Bedrock	Impermeable	CB
Mzs	Oceanside 30' x 60'	Coarse	Bedrock	Impermeable	CB
sch	Jennings; CA	Coarse	Bedrock	Impermeable	CB
Kp	San Diego & Oceanside 30' x 60'	Coarse	Bedrock	Impermeable	CB
Ql	El Cajon 30' x 60'	Coarse	Sedimentary	Impermeable	CSI
QTf	El Cajon 30' x 60'	Coarse	Sedimentary	Impermeable	CSI
Ec	Jennings; CA	Coarse	Sedimentary	Impermeable	CSI
K	Jennings; CA	Coarse	Sedimentary	Impermeable	CSI
Kccg	San Diego 30' x 60'	Coarse	Sedimentary	Impermeable	CSI
Kcs	San Diego 30' x 60'	Coarse	Sedimentary	Impermeable	CSI
Kl	San Diego, Oceanside & El Cajon 30' x 60'	Coarse	Sedimentary	Impermeable	CSI
Ku	Jennings; CA	Coarse	Sedimentary	Impermeable	CSI

Carlsbad WMAA Attachments

Map Unit	Map Name	Anticipated Grain size of Weathered Material	Bedrock or Sedimentary	Impermeable/ Permeable	Geology Grouping
Qvof	Oceanside 30' x 60'	Coarse	Sedimentary	Impermeable	CSI
Qvop8a	San Diego 30' x 60'	Coarse	Sedimentary	Impermeable	CSI
Qvop9a	San Diego 30' x 60'	Coarse	Sedimentary	Impermeable	CSI
Tmsc	San Diego 30' x 60'	Coarse	Sedimentary	Impermeable	CSI
Tmss	San Diego 30' x 60'	Coarse	Sedimentary	Impermeable	CSI
Tp	San Diego & El Cajon 30' x 60'	Coarse	Sedimentary	Impermeable	CSI
Tpm	San Diego 30' x 60'	Coarse	Sedimentary	Impermeable	CSI
Tsc	San Diego 30' x 60'	Coarse	Sedimentary	Impermeable	CSI
Tscu	San Diego 30' x 60'	Coarse	Sedimentary	Impermeable	CSI
Tsd	San Diego & El Cajon 30' x 60'	Coarse	Sedimentary	Impermeable	CSI
Tsdcg	San Diego 30' x 60'	Coarse	Sedimentary	Impermeable	CSI
Tsdss	San Diego 30' x 60'	Coarse	Sedimentary	Impermeable	CSI
Tsm	Oceanside 30' x 60'	Coarse	Sedimentary	Impermeable	CSI
Tso	Oceanside 30' x 60'	Coarse	Sedimentary	Impermeable	CSI
Tst	San Diego, Oceanside & El Cajon 30' x 60'	Coarse	Sedimentary	Impermeable	CSI
Tt	San Diego & Oceanside 30' x 60'	Coarse	Sedimentary	Impermeable	CSI
Tta	Oceanside 30' x 60'	Coarse	Sedimentary	Impermeable	CSI
Tmv	San Diego, Oceanside & El Cajon 30' x 60'	Coarse	Sedimentary	Impermeable	CSI
Tsi	Oceanside 30' x 60'	Coarse	Sedimentary	Impermeable	CSI
Qvoa	San Diego & Oceanside 30' x 60'	Coarse	Sedimentary	Impermeable	CSI
Qvoa11	Oceanside 30' x 60'	Coarse	Sedimentary	Impermeable	CSI
Qvoa12	Oceanside 30' x 60'	Coarse	Sedimentary	Impermeable	CSI
Qvoa13	Oceanside 30' x 60'	Coarse	Sedimentary	Impermeable	CSI
Qvoc	Oceanside 30' x 60'	Coarse	Sedimentary	Impermeable	CSI
Qvop	San Diego & Oceanside 30' x 60'	Coarse	Sedimentary	Impermeable	CSI
Qvop1	San Diego & Oceanside 30' x 60'	Coarse	Sedimentary	Impermeable	CSI
Qvop10	San Diego & Oceanside 30' x 60'	Coarse	Sedimentary	Impermeable	CSI
Qvop10a	San Diego 30' x 60'	Coarse	Sedimentary	Impermeable	CSI
Qvop11	San Diego & Oceanside 30' x 60'	Coarse	Sedimentary	Impermeable	CSI

Carlsbad WMAA Attachments

Map Unit	Map Name	Anticipated Grain size of Weathered Material	Bedrock or Sedimentary	Impermeable/ Permeable	Geology Grouping
Qvop11a	San Diego 30' x 60'	Coarse	Sedimentary	Impermeable	CSI
Qvop12	San Diego & Oceanside 30' x 60'	Coarse	Sedimentary	Impermeable	CSI
Qvop13	San Diego & Oceanside 30' x 60'	Coarse	Sedimentary	Impermeable	CSI
Qvop2	San Diego & Oceanside 30' x 60'	Coarse	Sedimentary	Impermeable	CSI
Qvop3	San Diego & Oceanside 30' x 60'	Coarse	Sedimentary	Impermeable	CSI
Qvop4	San Diego & Oceanside 30' x 60'	Coarse	Sedimentary	Impermeable	CSI
Qvop5	San Diego & Oceanside 30' x 60'	Coarse	Sedimentary	Impermeable	CSI
Qvop6	San Diego 30' x 60'	Coarse	Sedimentary	Impermeable	CSI
Qvop7	San Diego & Oceanside 30' x 60'	Coarse	Sedimentary	Impermeable	CSI
Qvop8	San Diego & Oceanside 30' x 60'	Coarse	Sedimentary	Impermeable	CSI
Qvop9	San Diego 30' x 60'	Coarse	Sedimentary	Impermeable	CSI
Tsa	Oceanside 30' x 60'	Coarse	Sedimentary	Impermeable	CSI
Qof	Oceanside 30' x 60'	Coarse	Sedimentary	Permeable	CSP
Qof1	Oceanside 30' x 60'	Coarse	Sedimentary	Permeable	CSP
Qof2	Oceanside 30' x 60'	Coarse	Sedimentary	Permeable	CSP
Q	Jennings; CA	Coarse	Sedimentary	Permeable	CSP
Qa	Oceanside 30' x 60'	Coarse	Sedimentary	Permeable	CSP
Qd	Oceanside 30' x 60'	Coarse	Sedimentary	Permeable	CSP
Qf	Oceanside 30' x 60'	Coarse	Sedimentary	Permeable	CSP
Qmb	San Diego & Oceanside 30' x 60'	Coarse	Sedimentary	Permeable	CSP
Qop	San Diego & Oceanside 30' x 60'	Coarse	Sedimentary	Permeable	CSP
Qw	San Diego & Oceanside 30' x 60'	Coarse	Sedimentary	Permeable	CSP
Qyf	Oceanside 30' x 60'	Coarse	Sedimentary	Permeable	CSP
Qt	El Cajon 30' x 60'	Coarse	Sedimentary	Permeable	CSP
Qoa1-2	Oceanside 30' x 60'	Coarse	Sedimentary	Permeable	CSP
Qoa2-6	Oceanside 30' x 60'	Coarse	Sedimentary	Permeable	CSP
Qoa5	Oceanside 30' x 60'	Coarse	Sedimentary	Permeable	CSP
Qoa6	Oceanside 30' x 60'	Coarse	Sedimentary	Permeable	CSP
Qoa7	Oceanside 30' x 60'	Coarse	Sedimentary	Permeable	CSP

Carlsbad WMAA Attachments

Map Unit	Map Name	Anticipated Grain size of Weathered Material	Bedrock or Sedimentary	Impermeable/ Permeable	Geology Grouping
Qoc	Oceanside 30' x 60'	Coarse	Sedimentary	Permeable	CSP
Qop1	Oceanside 30' x 60'	Coarse	Sedimentary	Permeable	CSP
Qc	El Cajon 30' x 60'	Coarse	Sedimentary	Permeable	CSP
Qu	El Cajon 30' x 60'	Coarse	Sedimentary	Permeable	CSP
Qoa	San Diego, Oceanside & El Cajon 30' x 60'	Coarse	Sedimentary	Permeable	CSP
Qop2-4	San Diego 30' x 60'	Coarse	Sedimentary	Permeable	CSP
Qop3	Oceanside 30' x 60'	Coarse	Sedimentary	Permeable	CSP
Qop4	Oceanside 30' x 60'	Coarse	Sedimentary	Permeable	CSP
Qop6	San Diego & Oceanside 30' x 60'	Coarse	Sedimentary	Permeable	CSP
Qop7	San Diego & Oceanside 30' x 60'	Coarse	Sedimentary	Permeable	CSP
Qya	San Diego, Oceanside & El Cajon 30' x 60'	Coarse	Sedimentary	Permeable	CSP
Qyc	San Diego & Oceanside 30' x 60'	Coarse	Sedimentary	Permeable	CSP
Mzu	San Diego & Oceanside 30' x 60'	Fine	Bedrock	Impermeable	FB
gb	Jennings; CA	Fine	Bedrock	Impermeable	FB
JTRm	El Cajon 30' x 60'	Fine	Bedrock	Impermeable	FB
Kat	Oceanside 30' x 60'	Fine	Bedrock	Impermeable	FB
Kc	El Cajon 30' x 60'	Fine	Bedrock	Impermeable	FB
Kgb	Oceanside 30' x 60'	Fine	Bedrock	Impermeable	FB
KJvs	El Cajon 30' x 60'	Fine	Bedrock	Impermeable	FB
Kmv	El Cajon 30' x 60'	Fine	Bedrock	Impermeable	FB
Ksp	El Cajon 30' x 60'	Fine	Bedrock	Impermeable	FB
Kvsp	Oceanside 30' x 60'	Fine	Bedrock	Impermeable	FB
Kwmt	Oceanside 30' x 60'	Fine	Bedrock	Impermeable	FB
Qv	Jennings; CA	Fine	Bedrock	Impermeable	FB
Tba	San Diego 30' x 60'	Fine	Bedrock	Impermeable	FB
Tda	Oceanside 30' x 60'	Fine	Bedrock	Impermeable	FB
Tv	Oceanside 30' x 60'	Fine	Bedrock	Impermeable	FB
Tvsr	Oceanside 30' x 60'	Fine	Bedrock	Impermeable	FB
Kgdfg	Oceanside 30' x 60'	Fine	Bedrock	Impermeable	FB
Ta	San Diego 30' x 60'	Fine	Sedimentary	Impermeable	FSI
Tcs	Oceanside 30' x 60'	Fine	Sedimentary	Impermeable	FSI
Td	San Diego & Oceanside	Fine	Sedimentary	Impermeable	FSI

Carlsbad WMAA Attachments

Map Unit	Map Name	Anticipated Grain size of Weathered Material	Bedrock or Sedimentary	Impermeable/ Permeable	Geology Grouping
	30' x 60'				
Td+Tf	San Diego 30' x 60'	Fine	Sedimentary	Impermeable	FSI
Qls	San Diego, Oceanside & El Cajon 30' x 60'	Fine	Sedimentary	Impermeable	FSI
Tm	Oceanside 30' x 60'	Fine	Sedimentary	Impermeable	FSI
Tf	San Diego, Oceanside & El Cajon 30' x 60'	Fine	Sedimentary	Impermeable	FSI
Tfr	El Cajon 30' x 60'	Fine	Sedimentary	Impermeable	FSI
To	San Diego & El Cajon 30' x 60'	Fine	Sedimentary	Impermeable	FSI
Qpe	San Diego & Oceanside 30' x 60'	Fine	Sedimentary	Permeable	FSP
Mexico	San Diego 30' x 60'	NA	NA	Permeable	Other
Kuo	San Diego 30' x 60'	NA (Offshore)	NA	Permeable	Other
Teo	San Diego & Oceanside 30' x 60'	NA (Offshore)	Sedimentary	Permeable	Other
Tmo	Oceanside 30' x 60'	NA (Offshore)	Sedimentary	Permeable	Other
Qmo	San Diego 30' x 60'	NA (Offshore)	Sedimentary	Permeable	Other
QTso	San Diego 30' x 60'	NA (Offshore)	Sedimentary	Permeable	Other
af	San Diego & Oceanside 30' x 60'	Variable, dependent on source material	Sedimentary		Other



## A.4.2 Quantitative Analysis

Soil loss estimates for each Geomorphic Landscape Unit were estimated using the Revised Universal Soil Loss Equation (RUSLE; Renard et al. 1997) listed below:

$$A = R \times K \times LS \times C \times P$$

Where

A = estimated average soil loss in tons/acre/year

R = rainfall-runoff erosivity factor

K = soil erodibility factor

LS = slope length and steepness factor

C = cover-management factor

P = support practice factor; assumed 1 for this analysis

Regional datasets used to estimate the inputs required to estimate the soil loss from each GLU are listed in table below:

Dataset	Source	Download year	Description
RUSLE – R Factor	SWRCB	2014	Regional R factor map was downloaded from <a href="ftp://swrcb2a.waterboards.ca.gov/pub/swrcb/dwq/cgp/Risk/RUSLE/RUSLE_R_Factor/">ftp://swrcb2a.waterboards.ca.gov/pub/swrcb/dwq/cgp/Risk/RUSLE/RUSLE_R_Factor/</a>
RUSLE – K Factor	SWRCB	2014	Regional K factor map was downloaded from <a href="ftp://swrcb2a.waterboards.ca.gov/pub/swrcb/dwq/cgp/Risk/RUSLE/RUSLE_K_Factor/">ftp://swrcb2a.waterboards.ca.gov/pub/swrcb/dwq/cgp/Risk/RUSLE/RUSLE_K_Factor/</a>
RUSLE – LS Factor	SWRCB	2014	Regional LS factor map was downloaded from <a href="ftp://swrcb2a.waterboards.ca.gov/pub/swrcb/dwq/cgp/Risk/RUSLE/RUSLE_LS_Factor/">ftp://swrcb2a.waterboards.ca.gov/pub/swrcb/dwq/cgp/Risk/RUSLE/RUSLE_LS_Factor/</a>
RUSLE – C Factor	USEPA	2014	Regional C factor map was downloaded from <a href="http://www.epa.gov/esd/land-sci/emap_west_browser/pages/wemap_mm_sl_rusle_c_qt.htm#mapnav">http://www.epa.gov/esd/land-sci/emap_west_browser/pages/wemap_mm_sl_rusle_c_qt.htm#mapnav</a>

GIS analysis was used to calculate the area weighted estimate of R, K, LS and C factors using the regional datasets listed in the table above. For the developed land cover the C factor was then adjusted to 0 from the regional estimate to account for management actions implemented on developed sites (e.g. impervious surfaces). Soil loss estimates ranged from 0 to 15.2 tons/acre/year.

For evaluating the degree of relative risk to a stream solely arising from changes in sediment and/or water delivery SCCWRP Technical Report 605, 2010 states:

*“The challenge in implementing this step is that presently we have insufficient basis to defensibly identify either low-risk or high-risk conditions using these metrics. For example, channels that are close to a threshold for geomorphic change may display significant morphological changes under nothing more than natural year-to-year variability in flow or sediment load.*

- *Acknowledging this caveat, we nonetheless anticipate that changes of less than 10% in either driver are unlikely to instigate, on their own, significant channel changes. This value is a conservative estimate of the year-to-year variability in either discharge or sediment flux that can be accommodated by a channel system in a state of dynamic equilibrium. It does not “guarantee,” however, that channel change may not occur—either in response to yet modest alterations in water or sediment delivery, or because of other urbanization impacts (e.g., point discharge of runoff or the trapping of the upstream sediment flux; see Booth 1990) that are not represented with this analysis.*
- *In contrast, recognizing a condition of undisputed “high risk” must await broader collection of regionally relevant data. We note that >60% reductions in predicted sediment production have resulted in both minimal (McGonigle) and dramatic (Agua Hedionda) channel changes, indicating that “more data” may never provide absolute guidance. At present, we suggest using predicted watershed changes of 50% or more in either runoff (as indexed by change in impervious area) or sediment production as provisional criteria for requiring a more detailed evaluation of both the drivers and the resisting factors for channel change, regardless of other screening-level assessments. Clearly, however, only more experience with the application of such “thresholds,” and the actual channel conditions that accompany them, will provide a defensible basis for setting numeric standards.”*

The following criterion was developed using the suggestions listed above and then used to assign relative sediment production rating to each GLU:

- Low: Soil Loss < 5.6 tons/acre/year [GLUs that have a soil loss of 0 to 5.6 tons/acre/year produces around 10% of the total coarse sediment soil loss from the study area]
- Medium: 5.6 tons/acre/year < Soil Loss < 8.4 tons/acre/year
- High: > 8.4 tons/acre/year [GLUs that have a soil loss greater than 8.4 tons/acre/year produces around 42% of the total coarse sediment soil loss from the study area]

Results from the quantitative analysis are summarized in Table A.4.2.

**Table A.4.2 Relative Sediment Production for different Geomorphic Landscape Units**

Geomorphic Landscape Unit (GLU)	Area (acres)	K	LS	C	R	A	Relative Sediment Production	Critical Coarse Sediment
CB-Agricultural/Grass-1	52883	0.20	4.67	0.14	50	6.5	Medium	No
CB-Agricultural/Grass-2	40633	0.21	5.19	0.14	56	8.3	Medium	No
CB-Agricultural/Grass-3	32617	0.22	6.04	0.14	57	10.6	High	Yes
CB-Agricultural/Grass-4	11066	0.23	7.38	0.14	57	13.5	High	Yes
CB-Developed-1	39746	0.22	3.77	0	49	0	Low	No
CB-Developed-2	32614	0.22	4.28	0	50	0	Low	No
CB-Developed-3	15841	0.22	4.86	0	49	0	Low	No
CB-Developed-4	1805	0.22	5.63	0	48	0	Low	No
CB-Forest-1	32231	0.20	6.38	0.14	39	6.8	Medium	No
CB-Forest-2	38507	0.20	7.20	0.13	45	8.8	High	Yes
CB-Forest-3	55303	0.20	8.14	0.13	48	10.6	High	Yes
CB-Forest-4	38217	0.20	9.95	0.14	50	13.6	High	Yes
CB-Other-1	1036	0.20	5.52	0.13	45	6.5	Medium	No
CB-Other-2	317	0.20	6.46	0.13	45	7.9	Medium	No
CB-Other-3	296	0.20	6.96	0.14	43	8.3	Medium	No
CB-Other-4	111	0.21	6.84	0.14	41	8.2	Medium	No
CB-Scrub/Shrub-1	88135	0.20	5.66	0.14	33	5.3	Low	No
CB-Scrub/Shrub-2	143694	0.20	6.51	0.14	37	6.8	Medium	No
CB-Scrub/Shrub-3	246703	0.21	7.33	0.14	41	8.4	Medium	No
CB-Scrub/Shrub-4	191150	0.21	8.28	0.14	42	9.8	High	No
CB-Unknown-1	1727	0.21	5.32	0.13	44	6.3	Medium	No
CB-Unknown-2	1935	0.21	5.95	0.13	44	7.1	Medium	No

Carlsbad WMAA Attachments

Geomorphic Landscape Unit (GLU)	Area (acres)	K	LS	C	R	A	Relative Sediment Production	Critical Coarse Sediment
CB-Unknown-3	1539	0.22	6.21	0.13	44	7.7	Medium	No
CB-Unknown-4	278	0.22	6.61	0.13	44	8.4	High	Yes
CSI-Agricultural/Grass-1	14609	0.34	2.72	0.14	39	4.8	Low	No
CSI-Agricultural/Grass-2	9059	0.37	3.61	0.14	47	8.7	High	Yes
CSI-Agricultural/Grass-3	10096	0.38	3.99	0.14	47	9.8	High	Yes
CSI-Agricultural/Grass-4	2498	0.37	4.33	0.14	47	10.5	High	Yes
CSI-Developed-1	82371	0.28	2.51	0	39	0	Low	No
CSI-Developed-2	22570	0.30	2.66	0	41	0	Low	No
CSI-Developed-3	13675	0.30	2.89	0	40	0	Low	No
CSI-Developed-4	3064	0.27	3.20	0	39	0	Low	No
CSI-Forest-1	449	0.27	4.26	0.13	43	6.6	Medium	No
CSI-Forest-2	611	0.25	5.11	0.13	44	7.5	Medium	No
CSI-Forest-3	716	0.29	4.43	0.13	44	7.4	Medium	No
CSI-Forest-4	348	0.30	4.49	0.13	43	7.6	Medium	No
CSI-Other-1	319	0.31	2.50	0.13	32	3.2	Low	No
CSI-Other-2	83	0.27	3.01	0.13	39	4.3	Low	No
CSI-Other-3	45	0.28	3.03	0.13	39	4.5	Low	No
CSI-Other-4	13	0.24	4.01	0.14	39	5.2	Low	No
CSI-Scrub/Shrub-1	9051	0.26	3.53	0.13	39	4.7	Low	No
CSI-Scrub/Shrub-2	10802	0.27	4.36	0.13	41	6.3	Medium	No
CSI-Scrub/Shrub-3	28220	0.26	4.82	0.13	41	6.7	Medium	No
CSI-Scrub/Shrub-4	20510	0.26	5.52	0.13	41	7.8	Medium	No
CSI-Unknown-1	5292	0.28	2.38	0.13	36	3.1	Low	No

Carlsbad WMAA Attachments

Geomorphic Landscape Unit (GLU)	Area (acres)	K	LS	C	R	A	Relative Sediment Production	Critical Coarse Sediment
CSI-Unknown-2	2074	0.29	2.98	0.13	40	4.5	Low	No
CSI-Unknown-3	2171	0.27	3.04	0.13	39	4.2	Low	No
CSI-Unknown-4	676	0.26	3.04	0.13	38	3.8	Low	No
CSP-Agricultural/Grass-1	59327	0.22	3.01	0.14	44	4.0	Low	No
CSP-Agricultural/Grass-2	8426	0.23	3.81	0.14	42	5.2	Low	No
CSP-Agricultural/Grass-3	2377	0.24	4.05	0.14	41	5.6	Low	No
CSP-Agricultural/Grass-4	291	0.22	6.28	0.14	52	10.1	High	Yes
CSP-Developed-1	85283	0.27	2.10	0	42	0	Low	No
CSP-Developed-2	7513	0.26	2.77	0	42	0	Low	No
CSP-Developed-3	2317	0.27	2.70	0	40	0	Low	No
CSP-Developed-4	272	0.27	2.76	0	38	0	Low	No
CSP-Forest-1	14738	0.22	4.52	0.14	44	6.0	Medium	No
CSP-Forest-2	3737	0.22	5.99	0.14	45	8.2	Medium	No
CSP-Forest-3	1858	0.21	6.42	0.14	45	8.5	High	Yes
CSP-Forest-4	484	0.21	7.62	0.14	48	10.2	High	Yes
CSP-Other-1	7404	0.23	2.61	0.14	39	3.2	Low	No
CSP-Other-2	343	0.24	3.68	0.13	40	4.8	Low	No
CSP-Other-3	126	0.24	3.76	0.13	40	4.9	Low	No
CSP-Other-4	17	0.24	4.19	0.13	39	5.3	Low	No
CSP-Scrub/Shrub-1	22583	0.23	3.75	0.14	41	4.8	Low	No
CSP-Scrub/Shrub-2	8938	0.24	5.63	0.14	40	7.1	Medium	No
CSP-Scrub/Shrub-3	7186	0.23	6.15	0.13	39	7.5	Medium	No
CSP-Scrub/Shrub-4	2609	0.22	7.16	0.14	43	9.3	High	Yes

Carlsbad WMAA Attachments

Geomorphic Landscape Unit (GLU)	Area (acres)	K	LS	C	R	A	Relative Sediment Production	Critical Coarse Sediment
CSP-Unknown-1	6186	0.25	2.63	0.13	40	3.4	Low	No
CSP-Unknown-2	744	0.27	3.49	0.13	39	4.8	Low	No
CSP-Unknown-3	350	0.28	3.32	0.13	38	4.5	Low	No
CSP-Unknown-4	78	0.28	3.26	0.13	40	4.5	Low	No
FB-Agricultural/Grass-1	6103	0.25	5.49	0.14	49	9.2	High	No
FB-Agricultural/Grass-2	7205	0.25	5.87	0.14	51	10.1	High	No
FB-Agricultural/Grass-3	6730	0.24	6.43	0.14	53	11.3	High	No
FB-Agricultural/Grass-4	2586	0.22	8.62	0.14	57	15.2	High	No
FB-Developed-1	10116	0.28	3.94	0	46	0	Low	No
FB-Developed-2	9075	0.28	4.41	0	45	0	Low	No
FB-Developed-3	5499	0.27	4.72	0	44	0	Low	No
FB-Developed-4	785	0.27	5.08	0	43	0	Low	No
FB-Forest-1	3780	0.21	7.24	0.13	39	8.0	Medium	No
FB-Forest-2	7059	0.21	7.53	0.13	43	8.8	High	No
FB-Forest-3	13753	0.22	8.02	0.13	43	9.7	High	No
FB-Forest-4	8899	0.26	9.63	0.13	35	11.5	High	No
FB-Other-1	172	0.26	5.72	0.13	44	8.6	High	No
FB-Other-2	75	0.26	5.97	0.13	38	7.7	Medium	No
FB-Other-3	76	0.28	6.27	0.13	34	7.6	Medium	No
FB-Other-4	36	0.31	6.70	0.13	33	8.6	High	No
FB-Scrub/Shrub-1	10297	0.24	6.94	0.14	36	8.3	Medium	No
FB-Scrub/Shrub-2	25150	0.25	7.24	0.14	38	9.0	High	No
FB-Scrub/Shrub-3	70895	0.25	7.89	0.13	38	10.0	High	No

Carlsbad WMAA Attachments

Geomorphic Landscape Unit (GLU)	Area (acres)	K	LS	C	R	A	Relative Sediment Production	Critical Coarse Sediment
FB-Scrub/Shrub-4	70679	0.26	9.05	0.14	39	12.1	High	No
FB-Unknown-1	654	0.30	5.33	0.13	37	7.6	Medium	No
FB-Unknown-2	829	0.29	5.26	0.13	40	7.9	Medium	No
FB-Unknown-3	1062	0.29	5.54	0.13	39	8.2	Medium	No
FB-Unknown-4	299	0.28	6.02	0.13	38	8.4	High	No
FSI-Agricultural/Grass-1	8462	0.32	3.91	0.13	24	3.9	Low	No
FSI-Agricultural/Grass-2	4979	0.33	4.29	0.13	31	5.7	Medium	No
FSI-Agricultural/Grass-3	4808	0.34	4.26	0.13	34	6.3	Medium	No
FSI-Agricultural/Grass-4	1055	0.35	4.11	0.13	36	6.7	Medium	No
FSI-Developed-1	9953	0.29	3.09	0	34	0	Low	No
FSI-Developed-2	4972	0.31	3.22	0	37	0	Low	No
FSI-Developed-3	3350	0.29	3.30	0	36	0	Low	No
FSI-Developed-4	763	0.28	3.31	0	37	0	Low	No
FSI-Forest-1	186	0.33	4.62	0.13	37	7.2	Medium	No
FSI-Forest-2	217	0.35	4.47	0.13	39	7.9	Medium	No
FSI-Forest-3	262	0.37	4.71	0.13	40	9.2	High	No
FSI-Forest-4	111	0.36	4.73	0.13	40	9.2	High	No
FSI-Other-1	266	0.31	3.11	0.13	24	2.9	Low	No
FSI-Other-2	81	0.30	3.29	0.13	25	3.1	Low	No
FSI-Other-3	56	0.31	3.04	0.13	27	3.2	Low	No
FSI-Other-4	15	0.29	3.57	0.13	33	4.4	Low	No
FSI-Scrub/Shrub-1	2241	0.27	4.46	0.13	29	4.5	Low	No
FSI-Scrub/Shrub-2	3911	0.28	4.96	0.13	31	5.7	Medium	No

Carlsbad WMAA Attachments

Geomorphic Landscape Unit (GLU)	Area (acres)	K	LS	C	R	A	Relative Sediment Production	Critical Coarse Sediment
FSI-Scrub/Shrub-3	7590	0.29	5.05	0.13	34	6.3	Medium	No
FSI-Scrub/Shrub-4	3502	0.30	5.14	0.13	37	7.5	Medium	No
FSI-Unknown-1	1117	0.29	2.83	0.13	27	3.0	Low	No
FSI-Unknown-2	780	0.30	3.44	0.13	32	4.3	Low	No
FSI-Unknown-3	855	0.29	3.41	0.13	31	4.0	Low	No
FSI-Unknown-4	285	0.28	3.21	0.13	32	3.7	Low	No
FSP-Agricultural/Grass-1	13	0.22	2.22	0.13	40	2.5	Low	No
FSP-Agricultural/Grass-2	3	0.22	2.59	0.13	40	3.0	Low	No
FSP-Agricultural/Grass-3	2	0.22	2.69	0.13	40	3.2	Low	No
FSP-Agricultural/Grass-4	0	0.20	2.94	0.12	40	2.9	Low	No
FSP-Developed-1	180	0.26	2.85	0	40	0	Low	No
FSP-Developed-2	13	0.25	2.69	0	40	0	Low	No
FSP-Developed-3	8	0.21	2.25	0	40	0	Low	No
FSP-Developed-4	0	0.21	2.29	0	40	0	Low	No
FSP-Forest-1	8	0.22	2.29	0.14	40	2.9	Low	No
FSP-Forest-2	5	0.20	2.22	0.14	40	2.5	Low	No
FSP-Forest-3	0	0.20	2.22	0.14	40	2.5	Low	No
FSP-Other-1	1307	0.20	2.38	0.14	40	2.7	Low	No
FSP-Other-2	34	0.21	2.36	0.14	40	2.7	Low	No
FSP-Other-3	8	0.22	2.56	0.13	40	3.0	Low	No
FSP-Other-4	0	0.43	4.35	0.12	40	9.3	High	No
FSP-Scrub/Shrub-1	147	0.23	2.68	0.14	40	3.3	Low	No
FSP-Scrub/Shrub-2	18	0.23	2.55	0.14	40	3.3	Low	No



Carlsbad WMAA Attachments

Geomorphic Landscape Unit (GLU)	Area (acres)	K	LS	C	R	A	Relative Sediment Production	Critical Coarse Sediment
FSP-Scrub/Shrub-3	4	0.20	2.23	0.14	40	2.6	Low	No
FSP-Scrub/Shrub-4	0	0.20	1.70	0.12	40	1.7	Low	No
FSP-Unknown-1	40	0.20	1.87	0.13	40	1.9	Low	No
FSP-Unknown-2	5	0.20	1.99	0.12	40	2.0	Low	No
FSP-Unknown-3	1	0.20	2.39	0.12	40	2.4	Low	No
O-Agricultural/Grass-1	2433	0.20	2.93	0.14	34	2.8	Low	No
O-Agricultural/Grass-2	112	0.21	3.44	0.14	32	3.2	Low	No
O-Agricultural/Grass-3	30	0.23	3.89	0.13	32	3.8	Low	No
O-Agricultural/Grass-4	1	0.26	6.47	0.13	37	7.9	Medium	No
O-Developed-1	8327	0.27	1.37	0	39	0	Low	No
O-Developed-2	474	0.25	2.12	0	40	0	Low	No
O-Developed-3	157	0.26	3.07	0	41	0	Low	No
O-Developed-4	26	0.24	3.89	0	41	0	Low	No
O-Forest-1	235	0.22	6.15	0.13	43	7.6	Medium	No
O-Forest-2	67	0.21	5.07	0.13	45	6.6	Medium	No
O-Forest-3	45	0.21	5.43	0.13	47	7.3	Medium	No
O-Forest-4	20	0.20	5.95	0.13	59	9.0	High	No
O-Other-1	9362	0.25	3.86	0.13	36	4.3	Low	No
O-Other-2	344	0.24	3.32	0.13	35	3.5	Low	No
O-Other-3	120	0.23	4.86	0.13	35	5.0	Low	No
O-Other-4	37	0.22	5.64	0.13	39	6.6	Medium	No
O-Scrub/Shrub-1	688	0.22	4.83	0.13	40	5.7	Medium	No
O-Scrub/Shrub-2	224	0.22	5.80	0.13	36	6.3	Medium	No

Geomorphic Landscape Unit (GLU)	Area (acres)	K	LS	C	R	A	Relative Sediment Production	Critical Coarse Sediment
O-Scrub/Shrub-3	209	0.22	6.47	0.13	41	7.5	Medium	No
O-Scrub/Shrub-4	96	0.22	6.62	0.13	44	8.2	Medium	No
O-Unknown-1	1236	0.28	1.60	0.12	26	1.5	Low	No
O-Unknown-2	62	0.27	1.48	0.13	36	1.8	Low	No
O-Unknown-3	15	0.29	3.52	0.13	38	4.9	Low	No
O-Unknown-4	7	0.34	3.87	0.12	40	6.6	Medium	No

**GLU Nomenclature:** Geology – Land Cover – Slope Category

**Geology Categories:**

- CB Coarse Bedrock
- CSI Coarse Sedimentary Impermeable
- CSP Coarse Sedimentary Permeable
- FB Fine Bedrock
- FSI Fine Sedimentary Impermeable
- FSP Fine Sedimentary Permeable
- O Other

**Slope Categories:**

- 1 0%-10%
- 2 10% - 20%
- 3 20% - 40%
- 4 > 40%

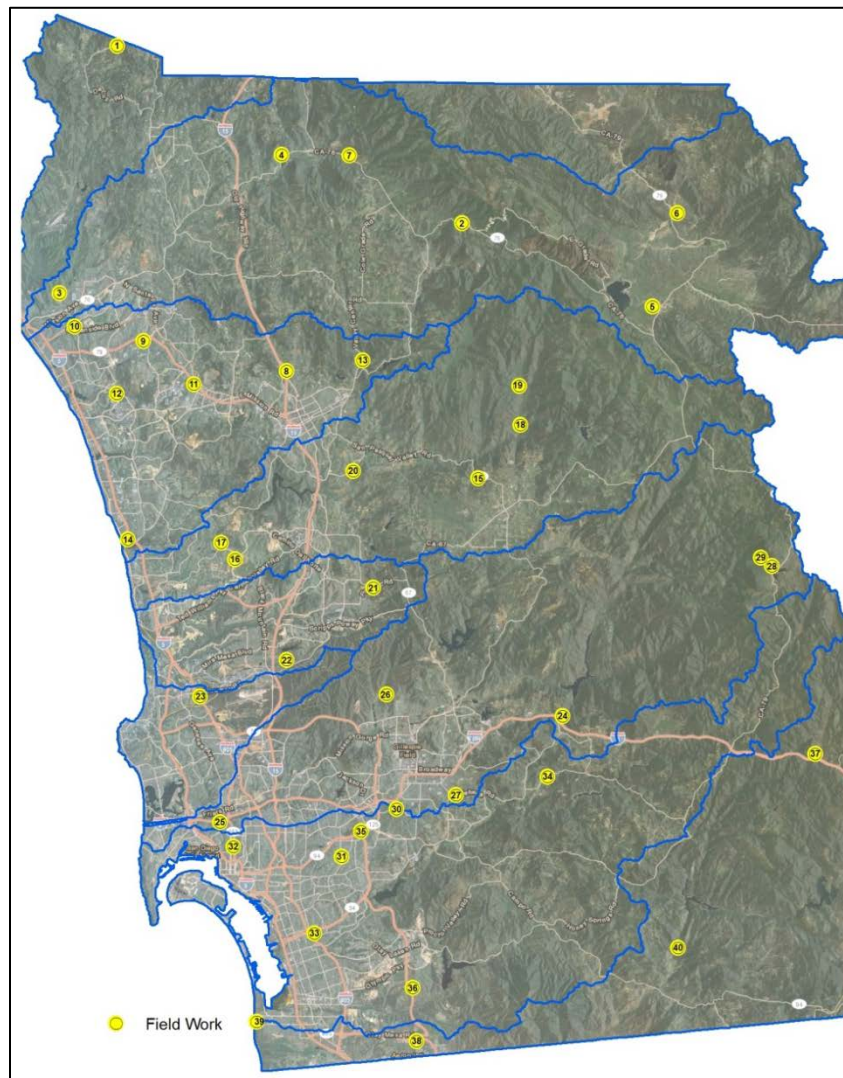
### A4.3 Field Assessment

#### Site Selection:

Forty locations were selected from the study region for field assessment. Sites were selected such that they are accessible by existing road network based on review of satellite imagery and are uniformly distributed considering the following criteria:

- Geologic grouping
- Land cover
- Slope category
- WMA
- Jurisdiction

Yellow circles in the figure below shows the 40 locations for which field assessment was performed.



### **Pre-Field Activities**

Prior to conducting field activities, the consultant team reviewed available published geologic information at each site location and prepared satellite imagery of each site using Google Earth™. Pre-field activities consisted of evaluating site access at each location using aerial imagery and logistics were coordinated based on regional site location to maximize field efficiency.

### **Site Reconnaissance**

Site reconnaissance was performed at forty locations between 22 January and 7 February 2014 by a team of geologists. The reconnaissance consisted of:

- Visual soil classification,
- Assessing existing vegetative cover (0-100%),
- Qualitative assignment of existing sediment production (low, medium, and high) [based on existing vegetative cover],
- Qualitative assignment of potential sediment production (low, medium, and high)[assuming there is 0% vegetative cover], and
- Identifying existing erosional features.

Descriptions and visual classifications of the surficial materials were based on the Unified Soil Classification System (USCS). Underlying geologic units were confirmed where exposed formations were observed within the individual site limits.

### **SITE AND GEOLOGIC CONDITIONS**

Our knowledge of the site conditions has been developed from a review of available geologic literature, previous geologic and geotechnical investigations by the consultant team in the study region, professional experience, site reconnaissance, and field investigations performed for this study.

#### **Surface Conditions**

Site locations were sited in open space with the exception of sites ID-27, -30, and -31 which were situated within developed areas with paved streets and sidewalks. The surface conditions at the site locations were characterized by sloping terrain varying from relatively flat (< 5%) to very steep slopes (> 40%). At the time of our reconnaissance the natural hillsides along the areas of interest were covered by varying degrees of moderate to dense growth scrub brush, low grasses, and scattered trees.

Existing erosional and geomorphic features at each site location were identified where possible. The observed erosional features included notable drainages, rilling, scour, and sediment accumulation. Observed geomorphic features included areas of minor slope instability and surficial slumping. Several sources of ground disturbance were identified during the site reconnaissance included active grading operations and bioturbation.

An evaluation of the existing and potential sediment production for each site was determined based on surface conditions. Sediment production was assigned as “high, medium, or low” based on the existing conditions and consultant team’s professional experience.

**Surficial Deposits**

Surficial deposits, including topsoil, alluvium, colluvium, slopewash, and residual soils are present in portions of the study area within the natural drainages and mantling the slope areas. The composition and grain size of these materials are variable depending on the age, parent sources, and mode of deposition.

**Geologic Conditions**

Our knowledge of the subsurface conditions at the site locations is based on a review of available published geologic information, professional experience, site reconnaissance, previous explorations and geotechnical investigations performed by the consultant team in the study region.